

Can Cyclosporine Testing Be Simple?

The Mainstream Solution for Cyclosporine Testing

Many current methods for Cyclosporine (CsA) testing require lengthy manual sample pretreatment steps. Others require extensive method validation procedures and specialized personnel to perform testing in batches. In short, many CsA methods require excessive time and resources to report results – two things that most laboratories don't have to spare. The key to efficient CsA testing is the ADVIA Centaur® immunoassay systems.

Make CsA Testing Part of Your Routine

Running CsA on the ADVIA Centaur immunoassay systems allows you to mainstream testing into your routine workflow without the need for extensive manual processing or specialized technicians.

Simplified sample handling for greater efficiency

- "Vortex and go" sample preparation – no centrifuge necessary
- One-tube processing

Perform CsA testing anytime, day or night

- "Always Ready" instrument operation
- No reagent preparation
- Dedicate STAT port
- Integrated onto a random access analyzer with 65+ assays available*

Outstanding analytical results

- High sensitivity for the CsA parent compound
- Limited cross-reactivity to CsA metabolites
- One assay that accommodates C₀ and the majority of C₂ testing

*Not all assays available in all countries or on all systems. Check with your local Siemens Healthcare Diagnostics representative for assay availability.

ADVIA Centaur Systems Cyclosporine (CsA) Assay

Answers for life.

SIEMENS

Cyclosporine (CsA) Assay Specifications

Assay Analytical Performance

Assay Principle	ADVIA Centaur® XP System	ADVIA Centaur® CP System
Sample Type	EDTA Whole Blood	EDTA Whole Blood
Sample Volume	100 µL	100 µL
Assay Range	30-1500 ng/mL (25 - 1247 nmol/L)	30-1500 ng/mL (25 - 1247 nmol/L)
Time to First Result	18 minutes	20 minutes
Reagent On-board Stability	42 days	42 days
Calibration Stability	28 days	14 days
On-board Dilutions	No	No
Analytical Sensitivity	30 ng/mL (25 nmol/L)	30 ng/mL (25 nmol/L)
20% Total CV	30 ng/mL (25 nmol/L)	30 ng/mL (25 nmol/L)

Assay Precision/Reproducibility

Level	Mean ng/mL		Within Run % CV		Total % CV	
	ADVIA Centaur XP	ADVIA Centaur CP	ADVIA Centaur XP	ADVIA Centaur CP	ADVIA Centaur XP	ADVIA Centaur CP
Control 1	85	75	3.8	4.2	5.7	6.8
Control 2	181	189	2.9	3.1	4.1	5.3
Control 3	372	414	2.8	3.3	5.5	6.1
Control 4	639	823	4.1	2.9	6.7	7.5
Control 5	1023	NA	4.6	NA	9.0	NA

Ordering Information

Catalog No.	Contents	No. of Tests
04564446	1 ReadyPack® primary reagent pack	50
Catalog No.	Description	Contents
04567127	CsA Pretreatment Reagent	2 x 26 mL/vial
04567682	CsA Calibrator	2 vials of low calibrator 2 vials of high calibrator Barcode labels CsA Calibrator Assigned Value card
01137199 (112351)	ADVIA Centaur Wash 1	2 x 1500 mL/pack
03773025	ADVIA Centaur Wash 1*	2 x 2500 mL/pack

ADVIA Centaur, ReadyPack and all associated marks are trademarks of Siemens Healthcare Diagnostics Inc. All other trademarks and brands are the property of their respective owners. Product availability may vary from country to country and is subject to varying regulatory requirements. Please contact your local representative for availability.

Siemens Global Headquarters

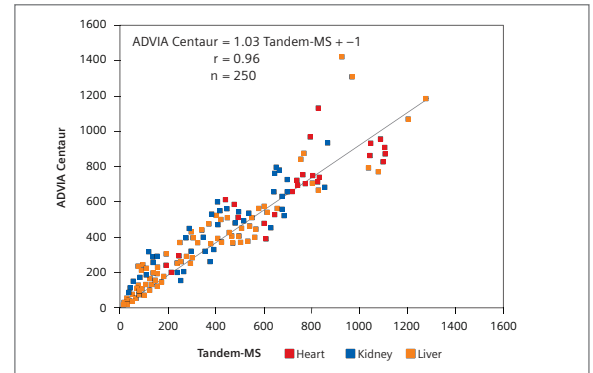
Siemens AG
Wittelsbacherplatz 2
80333 Muenchen
Germany

Global Siemens

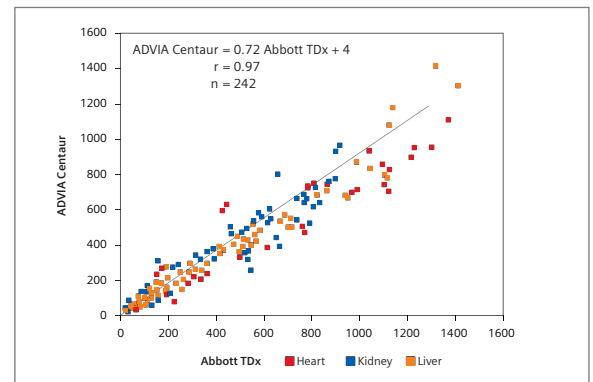
Healthcare Headquarters
Siemens AG
Healthcare Sector
Henkestrasse 127
91052 Erlangen, Germany
Telephone: +49 9131 84 - 0
www.siemens.com/healthcare

Analytical Agreement

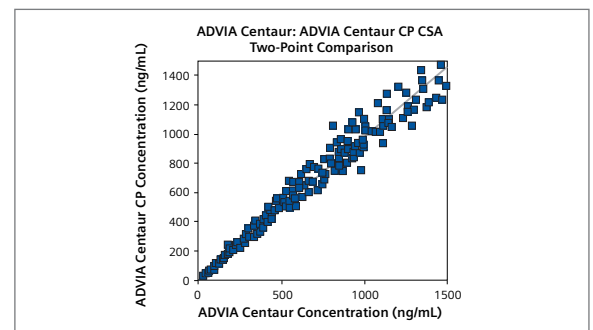
ADVIA Centaur vs Tandem Mass Spec



ADVIA Centaur vs Abbott TDx



ADVIA Centaur vs ADVIA Centaur CP



*For use with systems with 2500 mL capacity

Global Division

Siemens Healthcare Diagnostics Inc.
1717 Deerfield Road
Deerfield, IL 60015-0778
USA
www.siemens.com/diagnostics

www.siemens.com/diagnostics