

teamplay Images

connect, compare, collaborate.

siemens-healthineers.com/teamplay



Get more out of your data in radiology and cardiology

To advance digitalization in healthcare, teamplay is a departmental performance management cloud-based network that brings together healthcare professionals in a team effort. By connecting medical institutions and their imaging devices, teamplay provides its members with tools to tackle big data and the challenges of increasing cost pressure.

teamplay apps will help you make prompt and well-informed decisions by offering an intelligible overview of your performance data. To monitor quantities such as imaging throughput or dose levels, utilization of staff, rooms and resources of your whole department down to every device and procedure, simplifying your reporting and showing you where workflows need adjustments. It links you to other users of teamplay and their data to offer comparable bench-marks and an effortless exchange of images and reports with other healthcare providers. Get the teamplay apps to accelerate your clinical processes and to find the additional expert opinion you need – when you need it.



Avoid unnecessary spendings

How many CDs or DVDs do you burn and send to your patients? For a hospital burning just ten CDs per day, this can add up to \$400,000 every single year³⁾.

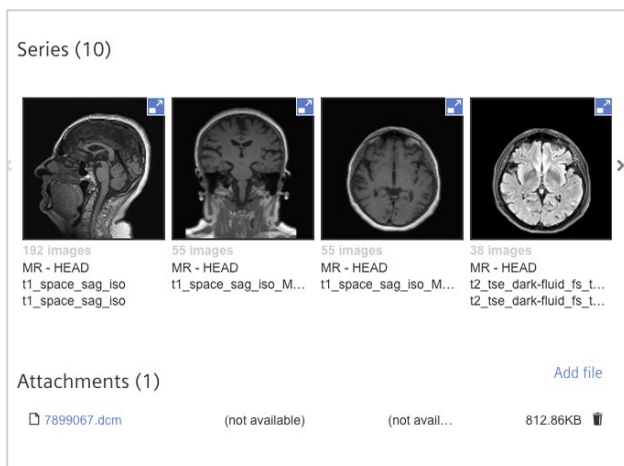


Feel secure when sending imaging data to your peers

How do you comply with security standards for patient data when venturing into the field of research and education?

Securely access, share and manage medical images

teamply Images and teamply Images Research¹⁾ are teamply's one-stop offerings for imaging studies, designed for quick and easy web access from your device of choice. Collaboration features help you engage in professional discourse in a secured environment and pool expertise with staff and peers to improve patient outcome. Enhance and speed up communication with referring physicians by offering direct access to the clinical images of their patients.



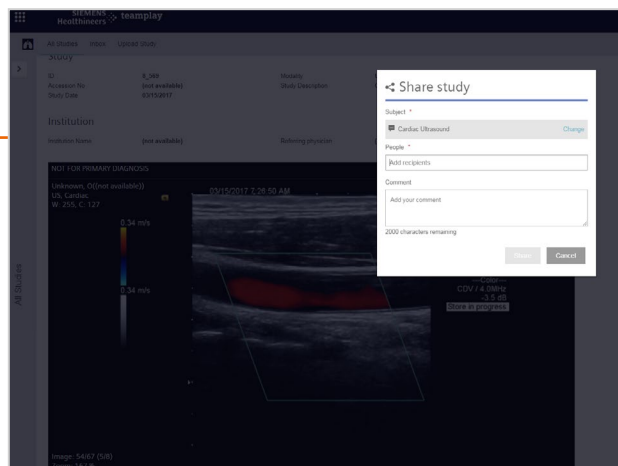
Important facts

teamply Image supports:

- Quick and easy image viewing and sharing²⁾
- Commenting on shared studies and share as well non-DICOM files
- Enriching your professional exchange of clinical cases with other professionals
- Building a virtual team

teamply is designed to help you solve relevant painpoints. To find out how, click here:

[siemens-healthineers.com/teamply](https://www.siemens-healthineers.com/teamply)



Direct Image exchange to peers

Share images safely

teamply Images creates a secured environment in which you can securely access and manage medical images, with their related patient information. It lets you exchange and discuss these images with staff and peers. Images ensures that data access, image views and communication revolving around cases observe data privacy and security regulations.

A web-based, zero-footprint viewer²⁾ lets you access imaging studies quickly and easily from your desktop or mobile device. View images full-screen, windowed, zoom in or pan to get a clear picture of the case at hand. Discuss relevant cases with referring physicians, medical experts and peers in quick, to-the-point comments. Easy commenting and sharing lets you engage in professional discourse from your desk or on the go. Get and provide objective feedback simply by adding your comments directly to shared studies. It's as simple as sending a text.

1) teamply Images Research is not intended for clinical use.

2) DICOM Image viewer is not intended for diagnosis.

3) <http://www.merge.com/Blogs/Enterprise-Imaging-Blog/July-2013/Top-Five-Image-Sharing-Misconceptions.aspx>

Siemens Healthineers Headquarters

Siemens Healthcare GmbH
Henkestr. 127
91052 Erlangen, Germany
Phone: +49 9131 84-0
[siemens-healthineers.com](https://www.siemens-healthineers.com)

CC SVDS © Siemens Healthcare GmbH, 2018.
All rights reserved.