

Population Health Management: Using AI to manage care gaps, proactively

How can you proactively track, visualize, and act on care gaps – and make sure your patients get the treatment they need?

Close the loops by digitalizing care gap management with our Proactive Follow-up. As an example, the app automates the identification, decision making, and follow-up of incidental findings in radiology reports. Transform care delivery and enhance patient outcomes with our Proactive Follow-up.

See for yourself!



This is the story of Janet:

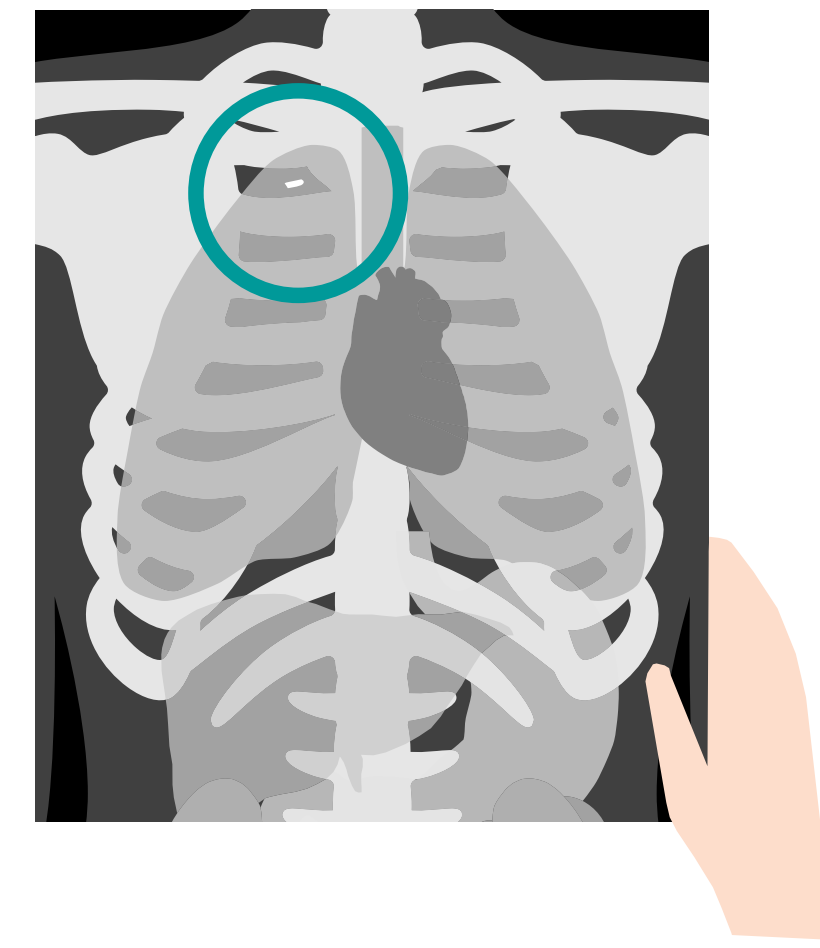
Janet suffers from chest pain



She goes to the ER



A CT scan shows an incidental finding of a 5 mm lung nodule



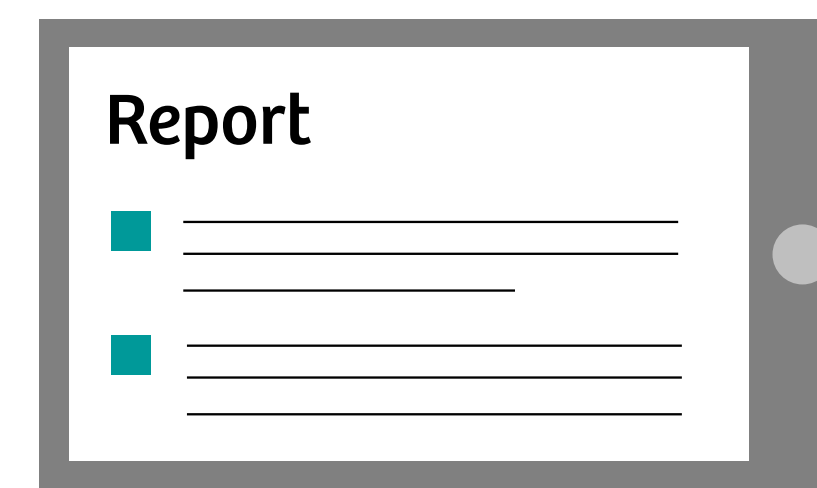
Did you know that approx. 35% of incidental findings requiring a follow-up don't receive it?¹⁾ Let's see what this could mean for Janet.

Scenario 1: Without Proactive Follow-up app

Scenario 2: With Proactive Follow-up app

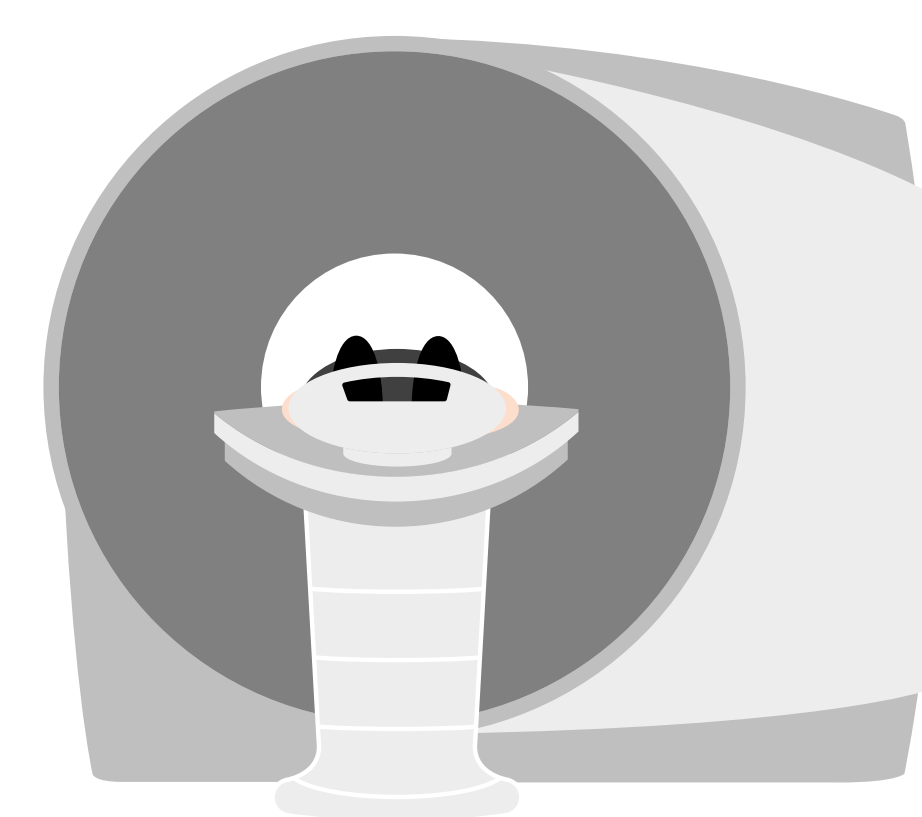
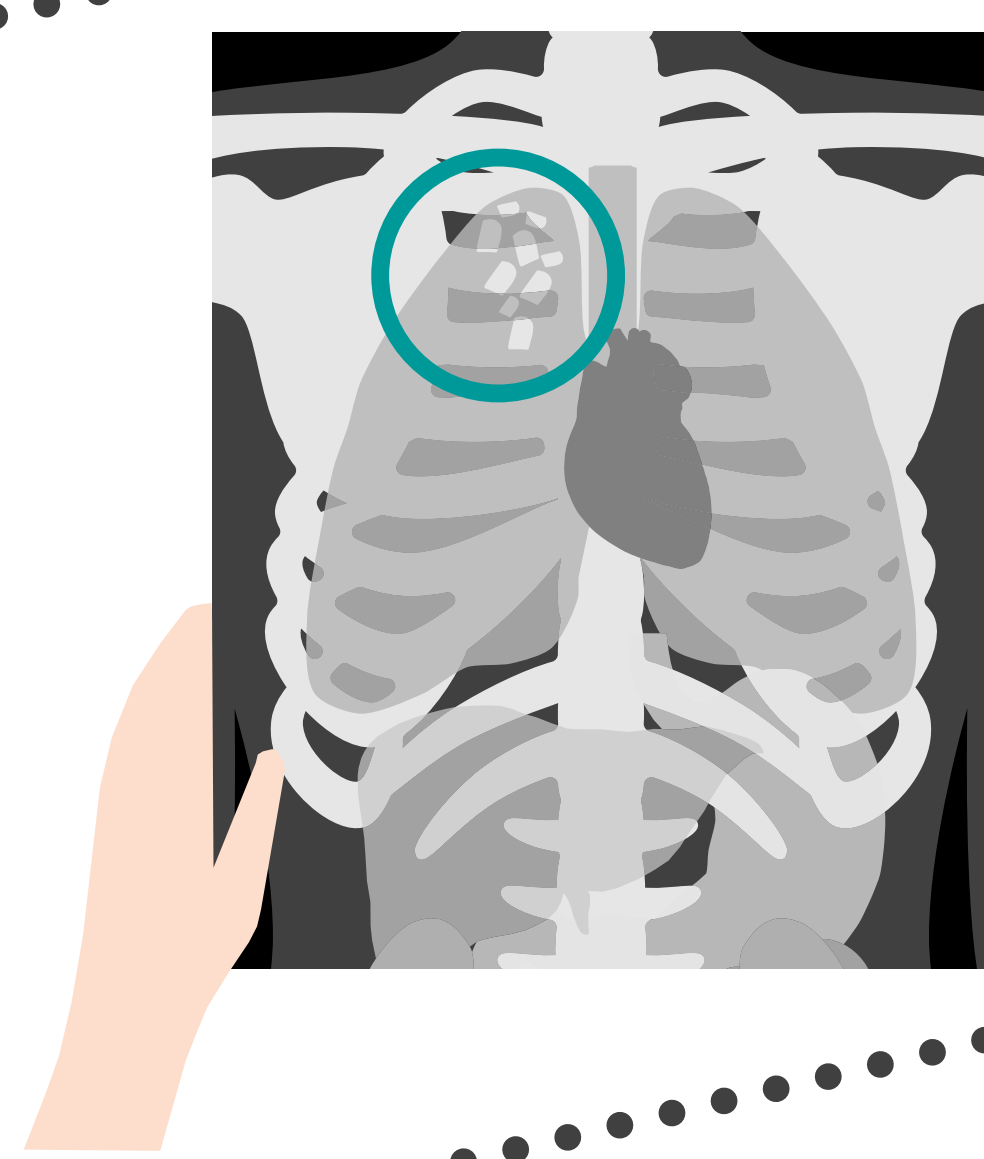


10 years later:
Janet suffers from severe coughing

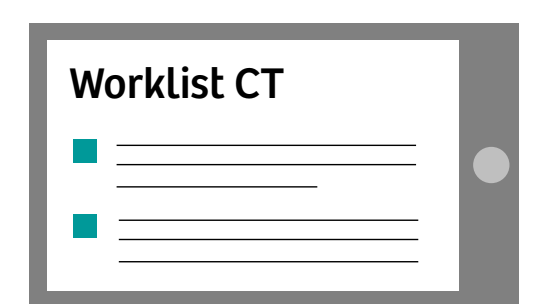


Proactive Follow-up identifies the incidental finding and includes it into its digital workflow

She gets a CT scan



1 year later:
the app suggests a CT follow-up



Diagnosis

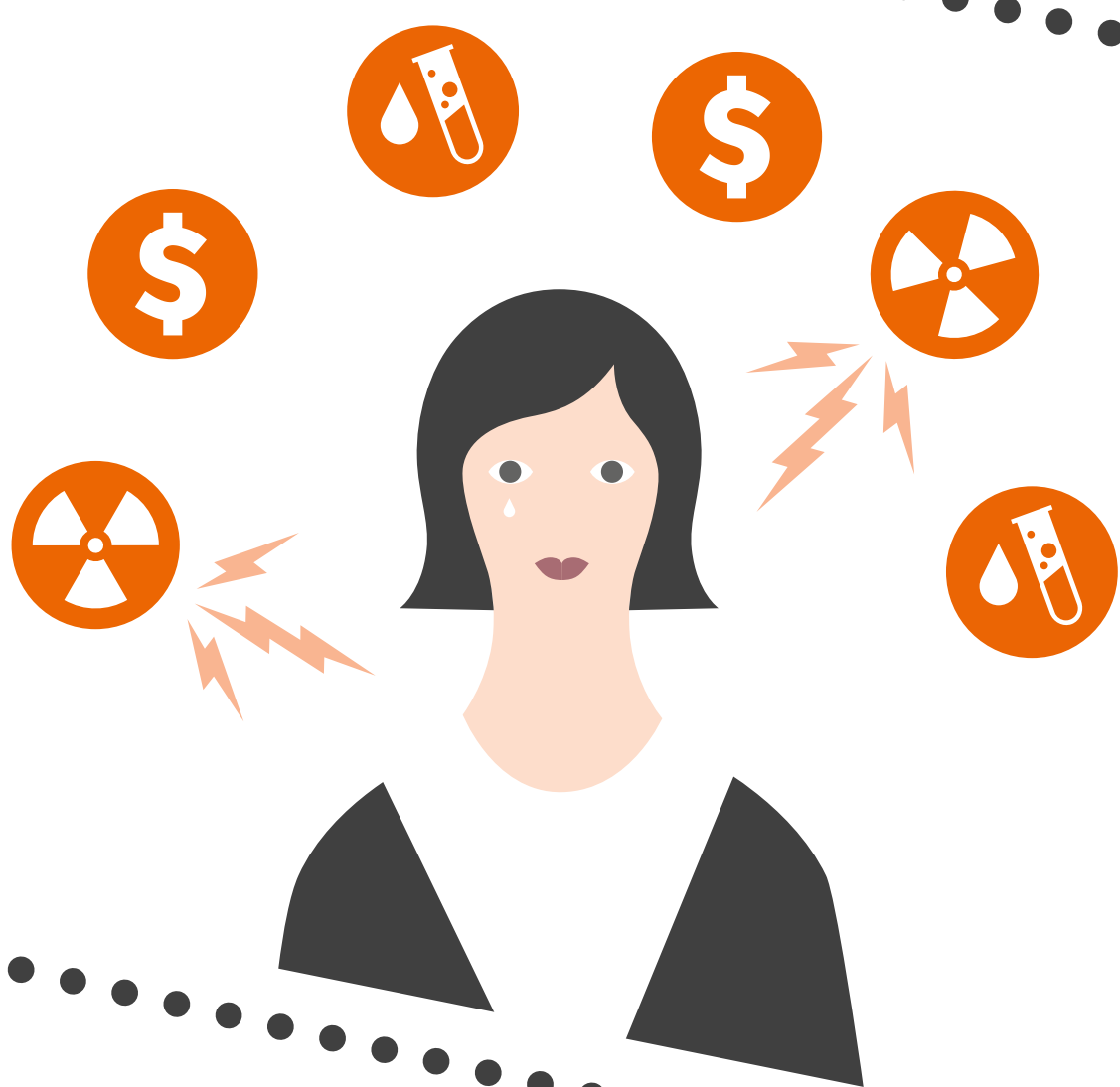
Stage IV lung cancer

The diagnosis:
stage IV lung cancer

The diagnosis:
8 mm lung nodule

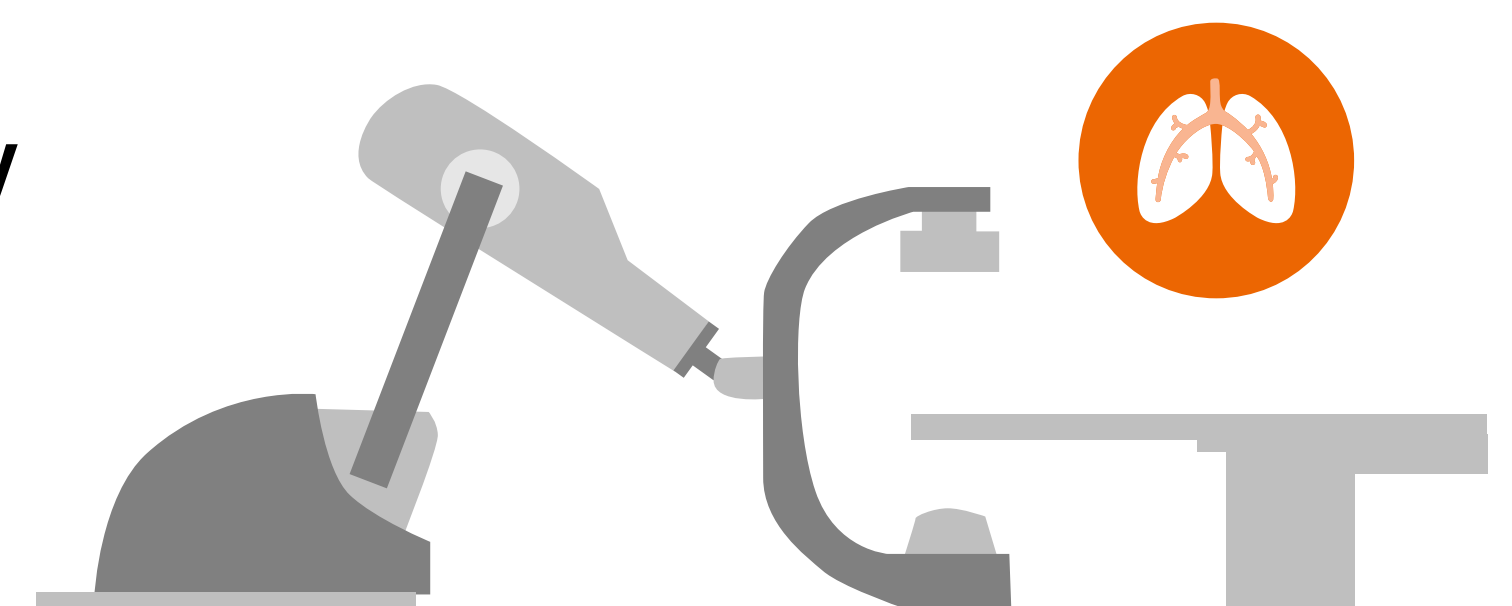
Diagnosis

8 mm Lung nodule

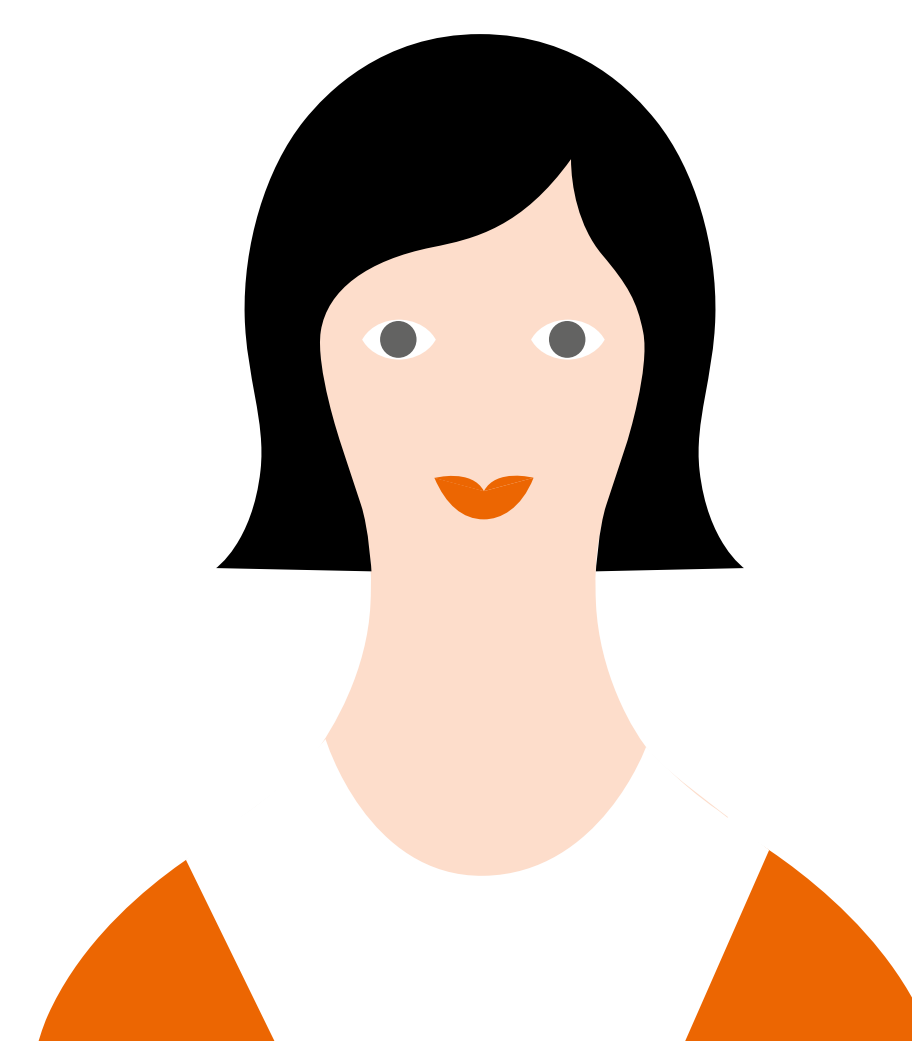


Janet needs expensive radiation therapy and chemo therapy

Janet gets a biopsy and minimally invasive surgery



Her survival prognosis:
3 years



She recovers and lives with monitoring