



Witness History in the Making!

Visit us
at booth
#2101

2016 AACC Annual Scientific Meeting and Clinical Lab Expo

Join us at AACC

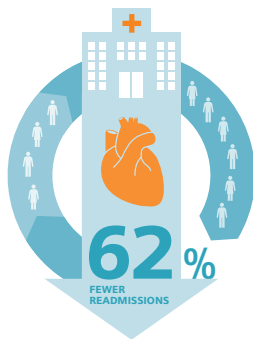
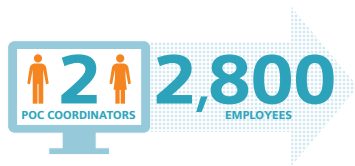
Exciting news from Siemens Healthineers at AACC

We invite you to see the unveiling of our game-changing, next-generation immunoassay and chemistry solution,[†] our point-of-care systems, and other new-to-the-USA products:

- Sysmex® CS-2500 and CS-5100 Hemostasis Systems with PSI™ technology
- IMMULITE® TSI assay for Graves' disease
- RAPIDComm® 6.0 Data Management System
- VERSANT® kPCR Sample Prep
- New Process Management Software[†]

Learn how you can:[‡]

Supervise 2,800 employees with just 2 POC Coordinators



Reduce cardiac ED readmissions by 62%

Earn CE credits at clinical talks and attend our workshops:

Troponin Evolution or Revolution? Implications for Patient Care

Alan Wu, PhD, San Francisco General Hospital;

Sara Collins, MD, FACC, Capital Cardiology Consultants, P.C.

Current Laboratory Trends in Successful Graves' Disease Management

Professor Damien Gruson, Laboratory Manager, Laboratory of Clinical Endocrinology, Cliniques Universitaires Saint Luc, Brussels, Belgium

Updating the Hemostasis Laboratory—New Instruments for Streamlining Workflow and Inclusion in Multidisciplinary Automation

Dr. David Good, Kingston, Canada; Don Manning, Brantford, Canada; Dr. Michael Weik, Siemens Healthineers, Marburg, Germany

Natriuretic Peptides: Understanding your Options

Robert H. Christenson, PhD, University of Maryland

Individualized Quality Control Plan (IQCP): What Does it Mean for You?

Christine Arruda, Senior Product Specialist, Critical Care

2016 AACC Annual Scientific Meeting and Clinical Lab Expo Siemens Healthineers booth #2101

Pennsylvania Convention Center

Philadelphia, PA USA

July 31–August 4, 2016

usa.siemens.com/aacc

*Under development. †Not yet available for sale.

‡Based on results achieved in the customers' unique settings. With many variables (hospital size, case mix, level of IT adoption), there can be no guarantee of achieving the same results.

IMMULITE, PSI, RAPIDComm, VERSANT, and all associated marks are trademarks of Siemens Healthcare Diagnostics Inc., or its affiliates. Sysmex is a trademark of Sysmex Corporation. All other trademarks and brands are the property of their respective owners.