


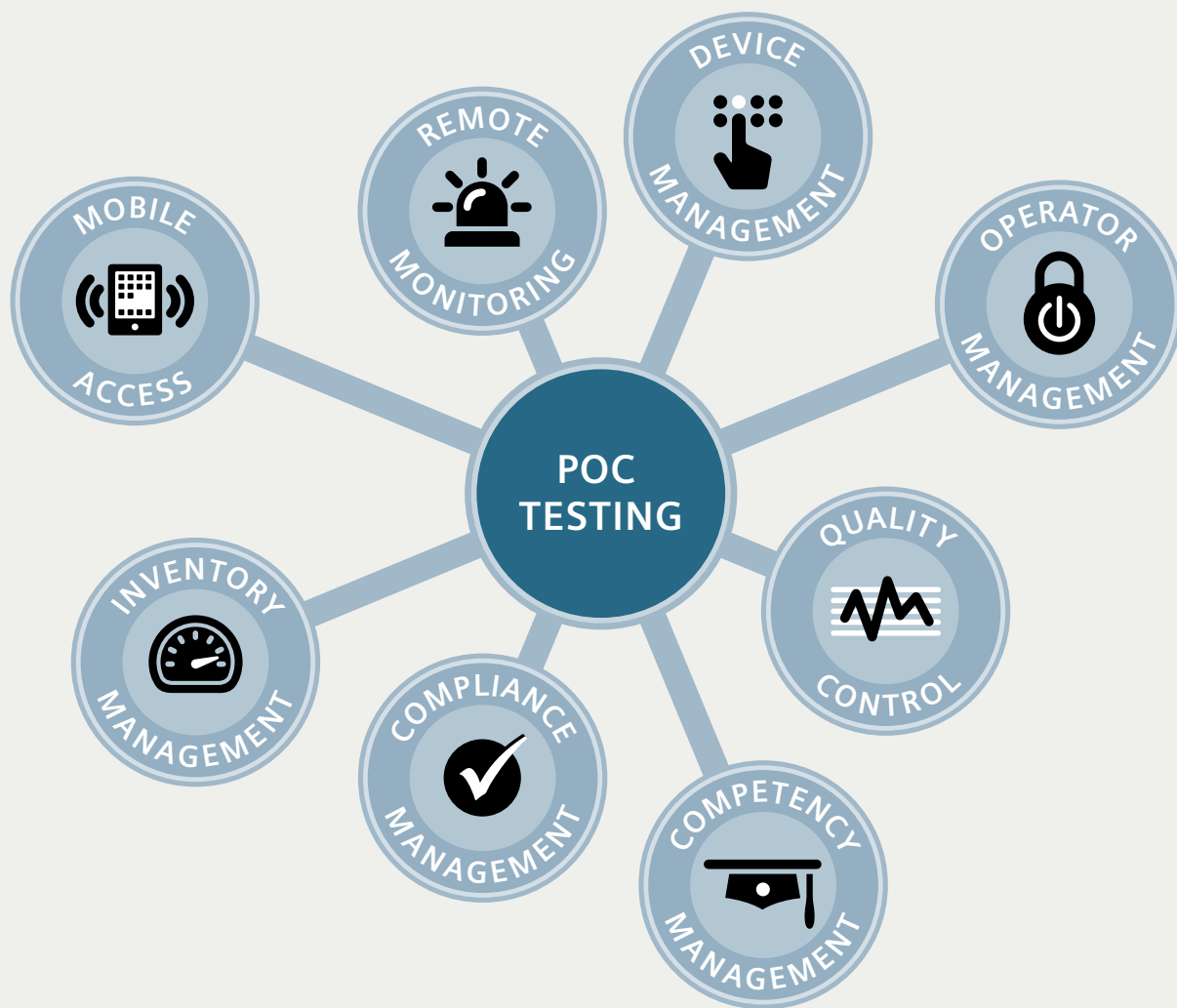
SIEMENS



Manage Point-of-Care Testing Here. There. Or Anywhere.

The RAPIDComm Data Management System—the center of your POC Ecosystem.

www.siemens.com/diagnostics



Establish and maintain a healthy point-of-care ecosystem.

It's about delivering optimal patient care—wherever diagnostic testing is performed—to help maximize efficiency, improve clinical workflows, satisfy compliance requirements, and reduce costs. Achieving these goals means overcoming numerous challenges involved with point-of-care (POC) testing. At Siemens, our goal is to help you establish and maintain a healthy POC Ecosystem™ environment—not simply through products, but by implementing integrated solutions.

The RAPIDComm Data Management System: Helping you overcome the challenges of POC testing

“RAPIDComm has been critical in helping us overcome and manage the challenges of POC testing in my institution and has helped us improve the care we provide to our patients.”

Dr. Stephano Pastori
U.O.C. Medicina di Laboratorio
A.O.G. Salvini—Garbagnate Milanese



How do you keep hundreds of POC devices up and running while managing training and certification and enabling secure access for thousands of operators? How do you enforce quality control and ensure that compliance and accreditation requirements are being satisfied?

The RAPIDComm® Data Management System helps address these POC testing challenges head-on. It enables centralized management of your POC program—all through a single and customizable interface. It’s a key enabler for establishing a healthy POC Ecosystem to help deliver optimal patient care, ensure compliance, and maximize efficiency—wherever POC data originates.



Device Management

Are all of your instruments working properly?

Ensure your POC devices are online, operational, and properly maintained with immediate oversight and control.

- Robust Connectivity
- Device Monitoring
- Maintenance Scheduling and Recording
- Remote Configuration
- Linearity Testing for Blood Gas

Whether you're managing just a few instruments in a lab or hundreds across multiple locations, the RAPIDComm solution offers robust and scalable connectivity to reliably network and monitor POC devices throughout your facility (up to 100 blood-gas, 100 diabetes, and 200 urinalysis instruments). You can set up, maintain, and oversee your instruments no matter where they are located.*

	Device	Location	Status	pH	pCO ₂	pO ₂	Na ⁺	K ⁺	Ca ⁺⁺	G ⁻	Lac	ctHb	nBili	AQC	Meas	W/W	Last Patient
●	H CC 500	Critical Care	● Obstruction	○	○	○	○	○	○	○	○	○	○	87%	86%	29%	9/6/2013 12:59 PM
○	H ED 500	Emergency	○	○	○	○	○	○	○	○	○	○	○	73%	57%	14%	9/6/2013 12:34 PM
○	H ENDO 405	Endocrinology	○	○	○	○	○	○	○	○	○	○	○	47%	46%	43%	9/6/2013 12:35 PM
●	H NICU 405	NICU	● Out of Paper	○	○	○	○	○	○	○	○	○	○	57%	59%	35%	9/6/2013 12:04 PM



Operator Management

Are your POC devices in secure hands?

Efficiently manage and ensure secure access to POC devices for certified operators.

- Centralized Operator Management
- Certification, Training, and Assessment
- Automated Operator Download
- Automatic Recertification
- Certification History
- Custom User Views
- Role-Based Privilege Assignment

Take control of your POC devices to ensure secure access and lock out unauthorized operators. With the RAPIDComm solution, you can centrally manage the operator IDs and passwords downloaded to your instruments to prevent unauthorized access. Leverage the power of automatic recertification functionality to better manage the ongoing training, assessment, and certification of all device operators.*

Set Up Operator Recertification - Blood Gas
Select recertification preferences, and click Apply.

Certification interval:

Allow automatic recertification when requirements are met

Calculate automatic recertification date

Based on date the first automatic recertification requirement is met

Based on date the last automatic recertification requirement is met

Automatic recertification requirements

Select the requirements that operators must meet within their certification interval.

Operator trained

Operator assessed

Number of valid QC results

Number of patient results

Number of proficiency results

Automatic recertification—flexible options can be configured to accommodate your specific needs.

*The RAPIDComm Data Management System solution supports connectivity to the RAPIDLab® 348, RAPIDLab 1200, RAPIDPoint® 400, and RAPIDPoint 500 series blood gas analyzers, CLINITEK Status® Connect urine chemistry analyzers, and DCA Vantage® diabetes-care test instruments.



Quality Control

Is your quality control under control?

Oversee and manage quality-control (QC) testing, result review, data management, and reporting activities for your POC devices.

- QC Data Management
- Advanced Analysis Rules
- QC Charts, Statistics, and Reports
- Electronic Recorded Reviews
- Exporting for Peer Comparison

QC testing and result management is easier using the RAPIDComm system. You can define requirements to ensure testing is performed on POC devices and satisfy all review and reporting requirements. Customization features also allow you to create rules to identify results that need your attention—enabling review by exception.



Competency Management

Wondering how to better manage training and certification?

Leverage the functionality of the RAPIDComm system in tandem with the Siemens web-based learning-management system to efficiently manage staff training, assessment, and recertification.

- Online Competency-Based Training
- Training Record Management
- Workgroup Management
- Personalized Learning Plans
- Qualification Plans and e-Quizzes
- Interface to PEP Administrator
- Proficiency Testing

You may have thousands of healthcare professionals conducting testing within your facility. Simplify training using the Siemens Personalized Education Plan (PEP);¹ which includes a comprehensive library of materials for general laboratory, clinical applications, and even instrument-specific training. With the PEP Administrator solution, you can tailor learning plans to assign required training and create and assign qualification plans containing custom e-quizzes. And with the interface to the RAPIDComm system, you can integrate competency management directly with automatic recertification for your operators.

Topics	Competencies	
System Overview	System Overview <input type="checkbox"/>	
Routine Operations	Urinalysis Strip Test <input type="checkbox"/>	hCG Cassette Test <input type="checkbox"/>
Quality Control	Urinalysis Quality Control Strip Test <input type="checkbox"/>	hCG Quality Control Cassette Test <input type="checkbox"/>
Maintenance	Maintenance <input type="checkbox"/>	
Installation	Analyzer Setup <input type="checkbox"/>	Analyzer Customization <input type="checkbox"/>
Connect System	System Overview <input type="checkbox"/>	Configuration and Data Management <input type="checkbox"/>

The Siemens Personalized Education Plan (PEP), PEP Administrator, and other programs developed by our certified experts help decrease the time required to achieve job competency while leveraging comprehensive libraries of online training materials for your staff.

1. PEP patent pending.



Compliance Management

Are you ready for your next inspection?

Satisfy compliance and accreditation requirements for your POC testing program with advanced data-management capabilities.

- [Accurate Reporting of Patient Results](#)
- [Nonconformity Issue Management](#)
- [POCT Personnel Compliance](#)
- [Maintenance Reporting](#)
- [Linearity Reporting](#)
- [Custom Report Designer](#)
- [Audit Trail](#)
- [Screen Customization](#)

You have accreditation requirements and goals for your staff and your POC program. And you need to be prepared at a moment's notice to demonstrate overall compliance. The RAPIDComm system features extensive compliance-management and reporting functionality. Configure custom rules to identify noncompliant issues with patient and QC results to ensure that the appropriate action is taken and documented. Strive to go paper-free by recording electronic reviews of patient and QC results and generating electronic reports. When it's time for your next inspection, compliance reporting can be comprehensive, organized, and just a click away.



Inventory Management

Keeping on top of supplies with an ever-shrinking budget?

Manage your POC consumables more efficiently with material-usage and device-workload reports and real-time information on consumable levels for your POC instruments.

- [Material-Usage Reports](#)
- [Device-Workload Reports](#)
- [Consumable Monitoring](#)
- [Consumable Alerts](#)

It can be a difficult balance: making sure consumables are available for your POC instruments while keeping a keen eye on your program's budget—which may have been recently trimmed. The RAPIDComm Device-Workload and Material-Usage Reports can help you quickly identify supply consumption and simplify ordering and cross-charging activities. Leverage onboard inventory monitoring for blood-gas devices to help proactively ensure testing availability. Spend less time focusing on supplies and more time focusing on patient care.





Mobile Access

Want to manage your POC devices here, there, or anywhere?

Remain in control on the go with the RAPIDComm Web Application.

- Wireless Connectivity
- Web Application
- Handheld Device Support
- Web-Browser Access
- Handheld Remote View and Control

You can't be everywhere all of the time, and now you don't have to be. With the RAPIDComm Web Application, you can quickly view the status of your POC instruments and troubleshoot issues—even from a handheld device. For blood-gas analyzers, you can even remotely view and control instruments, regardless of where they are located or wherever your busy day takes you.



Remotely manage your POC devices with your tablet.



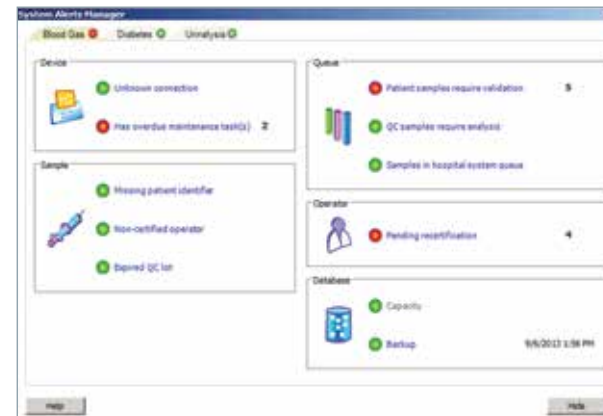
Remote Monitoring

Wishing for a real-time view of your entire POC program?

Investigate and resolve issues quickly with connected devices, operators, samples, results, and compliance-related activities that require your attention.

- Configurable Dashboard
- Audible Alerts
- Remote View
- Remote Control
- Remote Commands

You always want to ensure things are running smoothly, and RAPIDComm remote monitoring capabilities can help. Check immediate status overviews of all connected devices and remotely view and control them as necessary. Help resolve instrument-related problems faster, address user or sample errors, or simply make sure that your POC testing program is running smoothly, safely, and accurately for your staff and—most importantly—their patients.



The System Alert Manager identifies issues that need your attention.

Discover how the RAPIDComm Data Management System helps streamline workflow, reduces costs, and improves patient care—regardless of the size or location of your testing program. Siemens can help you establish and maintain an effective and efficient POC Ecosystem. To learn more about the RAPIDComm Data Management System, visit www.siemens.com/rapidcomm.

Siemens Healthcare Diagnostics, a global leader in clinical diagnostics, provides healthcare professionals in hospital, reference, and physician office laboratories and point-of-care settings with the vital information required to accurately diagnose, treat, and monitor patients. Our innovative portfolio of performance-driven solutions and personalized customer care combine to streamline workflow, enhance operational efficiency, and support improved patient outcomes.

POC Ecosystem, RAPIDComm, and all associated marks are trademarks of Siemens Healthcare Diagnostics Inc. All other trademarks and brands are the property of their respective owners. Product availability may vary from country to country and is subject to varying regulatory requirements. Please contact your local representative for availability.

Order No. A91DX-POC-130144-GC3-4A00
03-2014 | All rights reserved
© 2014 Siemens Healthcare Diagnostics Inc.

Global Siemens Headquarters

Siemens AG
Wittelsbacherplatz 2
80333 Muenchen
Germany

Global Siemens Healthcare Headquarters

Siemens AG
Healthcare Sector
Henkestrasse 127
91052 Erlangen
Telephone: +49 9131 84-0
Germany
www.siemens.com/healthcare

Global Division

Siemens Healthcare Diagnostics Inc.
511 Benedict Avenue
Tarrytown, NY 10591-5005
USA
www.siemens.com/diagnostics