



Musculoskeletal

# The complete, portable patient care solution

ACUSON P300 Ultrasound System

## Mobile. Powerful. Extraordinarily versatile.

The ACUSON P300 ultrasound system provides excellent real-time performance in a small package for musculoskeletal exams. With excellent image quality and enhanced workflow, the system allows you to diagnose and evaluate even the most difficult pathology. It can be used to assess and treat most injuries or diseases with therapeutic injections and aspirations, and it can monitor most changes in anatomical structure. It's a powerful mobile platform delivers everything you expect and more.

For more information, visit [www.siemens.com/ACUSONP300](http://www.siemens.com/ACUSONP300)



## Care in seeing the details.

Advanced imaging technologies come standard on the ACUSON P300™ ultrasound system, such as panoramic imaging, speckle reduction, and advanced spatial compounding. B-steer mode provides clear needle visualization for accurate line placement. These features provide excellent detail and contrast resolution to increase confidence in your musculoskeletal diagnoses.



## Comprehensive musculoskeletal capabilities.

The system supports a vast range of multi-frequency transducers that enable fast and accurate diagnoses for musculoskeletal imaging. With frequencies ranging as low as 5 MHz and up to 18 MHz, our transducers provide superb real-time deep or superficial tissue with a simple setting change, enabling the flexibility to scan a variety of patient body types easily.



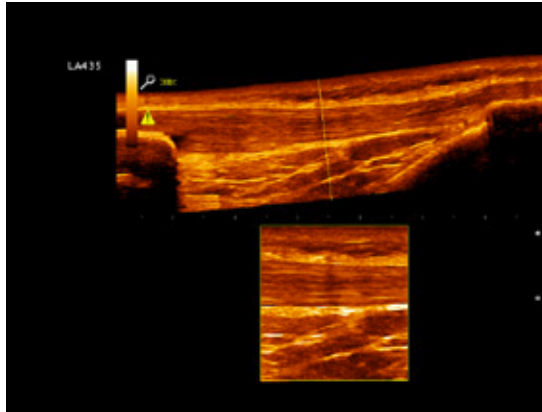
## Work the way you need to.

The ACUSON P300 system features a small footprint and mobile cart with hydraulic adjustable height making it easy to use, store and move from room to room. Designed with customizable presets, measurements and reporting, a 15-inch display, integrated power supply, 80-minute battery, two transducer ports, and three USB ports, the ACUSON P300 ultrasound system was designed with you in mind.

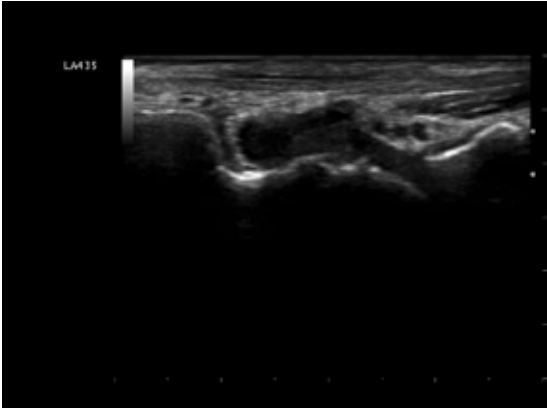
Answers for life.



**Left:**  
LA435 – 18 MHz  
linear transducer



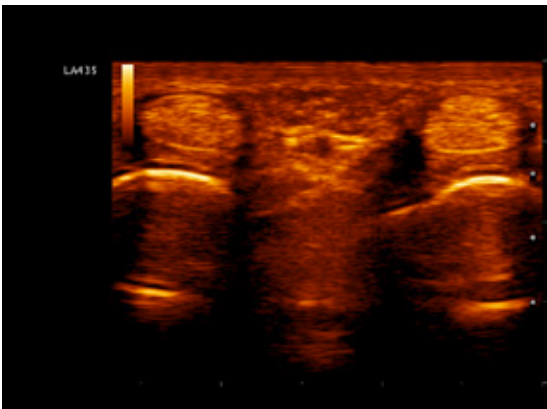
**Right:**  
Thickened proximal  
patellar tendon with  
deep surface tear



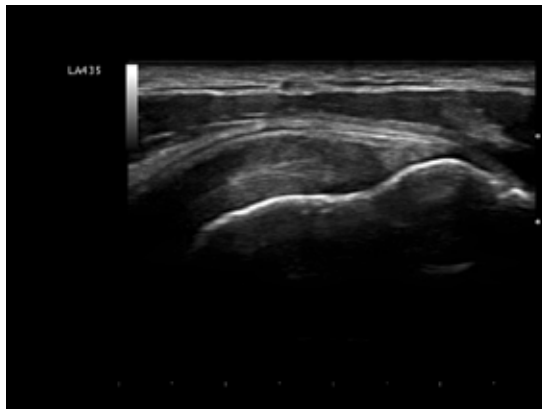
**Left:**  
Complex effusion at  
talo-navicular joint



**Right:**  
Thickened proximal  
patellar tendon  
with scattered  
calcifications



**Left:**  
Flexor tendons  
at metacarpal  
phalangeal joint



**Right:**  
Tendinotic supra-  
spinatus tendon  
at insertion

ACUSON P300 is a trademark of Siemens Medical Solutions USA, Inc.

**Global Siemens Headquarters**  
Siemens AG  
Wittelsbacherplatz 2  
80333 Muenchen

**Global Siemens Healthcare  
Headquarters**  
Siemens AG  
Healthcare Sector  
Henkestraße 127  
91052 Erlangen  
Germany  
Phone: +49 9131 84-0

**Legal Manufacturer**  
Siemens Medical Solutions USA, Inc.  
Ultrasound  
685 E. Middlefield Road  
Mountain View, CA 94043  
USA  
Phone: 1-888-826-9702  
www.siemens.com/ultrasound

Order No. A91US-286-1C-4A00 | Printed in Germany | CC US 2116 04141. | © 04.2014, Siemens Medical Solutions USA, Inc.