



14L5BV Transducer

## ACUSON S2000™ Automated Breast Volume Scanner (ABVS)

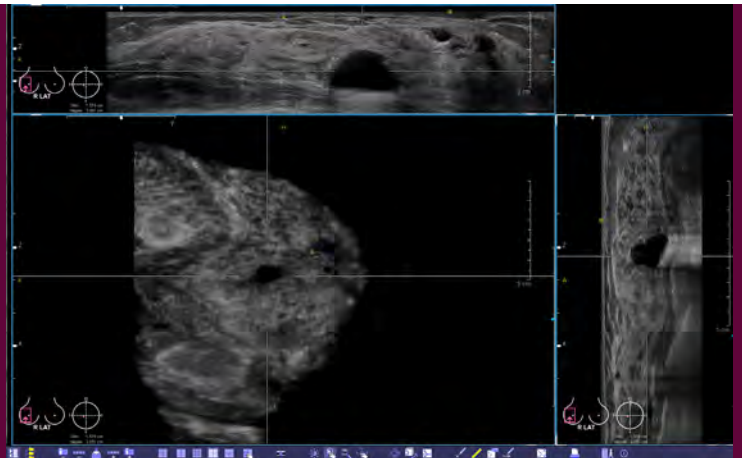
### 14L5BV Transducer

Frequency Bandwidth:	5.0 – 14.0 MHz
Selectable 2D Frequencies:	7.0, 8.0, 9.0, 10.0, 11.0 MHz
Selectable THI Frequencies:	H12.0 , H14.0 MHz
Number of Elements:	768
Footprint:	154 mm x 168 mm
Array Length:	154 mm
Maximum Field of View:	154 mm x 168 mm
Maximum Display Depth:	60 mm
Line Spacing:	0.175 mm or 0.125 mm
Resolution:	Axial = 0.09 mm; Lateral = 0.16 mm; Sagittal = 0.44 mm
Compatible with:	ACUSON S2000™ ultrasound system
Exam Types:	Breast
Design Attributes:	<ul style="list-style-type: none"><li>• Wide bandwidth linear transducer</li><li>• Hanafy lens transducer technology</li></ul>



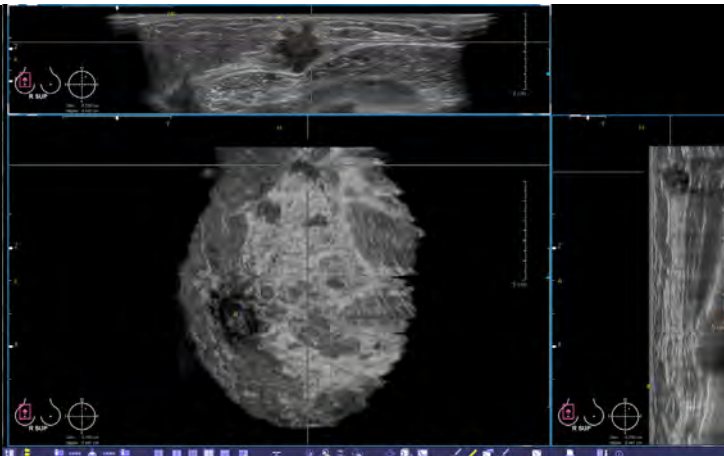
### ACUSON S2000 Automated Breast Volume Scanner (ABVS)

- The first multi-use system that automatically, quickly and comfortably surveys and acquires full field volumes of the breast. It provides efficient and comprehensive analysis of the 3D data, and facilitates easy, semi-automated reporting.



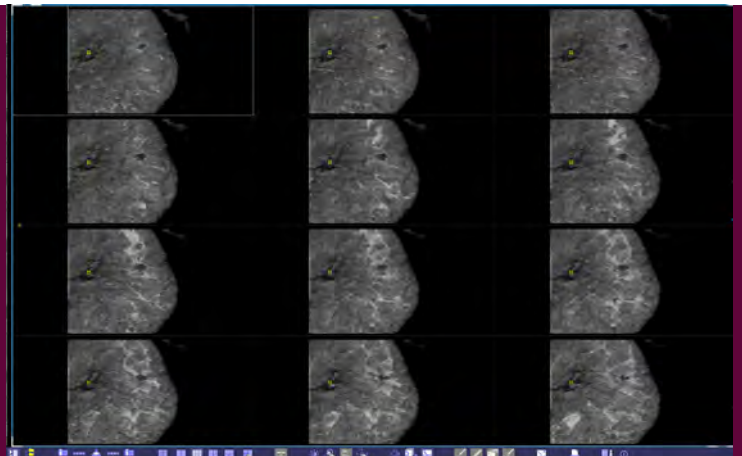
### 3-on-1 Hanging Protocol of a 3D Ultrasound of the Breast

- A simple cyst is clearly visualized in all three planes. The coronal plane demonstrates the simple cyst in relationship to the nipple and pectoralis muscle. (Top: Transverse; Bottom Left: Coronal; Bottom Right: Sagittal)



### 3-on-1 Hanging Protocol of a 3D Ultrasound of the Breast

- 3-on-1 hanging protocol reveals a spiculated, biopsy-proven invasive ductal carcinoma in all three orthogonal planes. The distortion in the breast parenchyma is nicely demonstrated in the coronal plane (bottom right).



### MultiSlice Imaging

- MultiSlice coronal ultrasound images of the breast reveal a biopsy-proven invasive ductal carcinoma. The yellow marker indicates the nipple.

Standalone clinical images may have been cropped to better visualize pathology.

Frequency bandwidth measurements represent bandwidth at  $\pm 20$  dB.

ACUSON and S2000 are trademarks of Siemens Medical Solutions USA, Inc.

© 06.2011. Siemens Medical Solutions USA, Inc.

#### Global Siemens Headquarters

Siemens AG  
Wittelsbacherplatz 2  
80333 Muenchen  
Germany

#### Global Siemens Healthcare Headquarters

Siemens AG  
Healthcare Sector  
Henkestr. 127  
91052 Erlangen  
Germany  
Phone: +49 9131 84-0

#### Legal Manufacturer

Siemens Medical Solutions USA, Inc.  
Ultrasound  
1230 Shorebird Way  
Mountain View, CA 94043 USA  
Phone: +1-888-826-9702