

Urology Imaging



The ultra-compact ACUSON X150™ ultrasound system delivers best-in-class diagnostic capabilities, versatile ergonomics, workflow efficiencies and true scalability at an extraordinary value. Renal, small parts and prostate exams are easily addressed using MultiHertz transducers. Reports can be customized to the physician's or institution's needs using the Physician Summary feature.

Highlights

Increase Diagnostic Confidence:

- Color and Power Doppler Imaging
 - Enhance detection and visualization of blood flow in areas such as the testicles, kidneys and penis.
- Phase Inversion Tissue Harmonic Imaging (THI)
 - Improves contrast resolution by reducing noise and clutter in the image, improving visualization in testicular, prostate and bladder imaging.

Streamline Workflow and Improve Clinical Efficiency:

- TGO™ Tissue Grayscale Optimization Technology
 - Automatically optimizes the image with the press of a button, shortening exam times, reducing repetitive motion and providing consistently optimized exams across patients, users and applications.
- Physician Summary Utility
 - Supports on-system report generation which includes patient data, images, comments and recommendations and the ability to customize letterhead and signature line.

Maximize the Versatility of Each Transducer:

- MultiHertz™ Multiple Frequency Imaging
 - Provides a range of user-selectable frequencies to optimize resolution and enhance the versatility of each wideband transducer.
- Hanafy Lens Transducer Technology
 - Maintains excellent image uniformity and penetration throughout the field of view for improved resolution, without applying excessive transducer pressure.

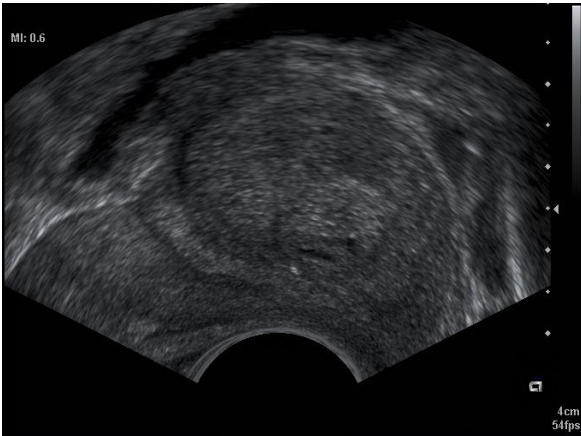
Designed to Grow with Your Practice

This flexible system allows you to add powerful, advanced features to tailor the system to your current clinical needs, while providing a platform for future growth.

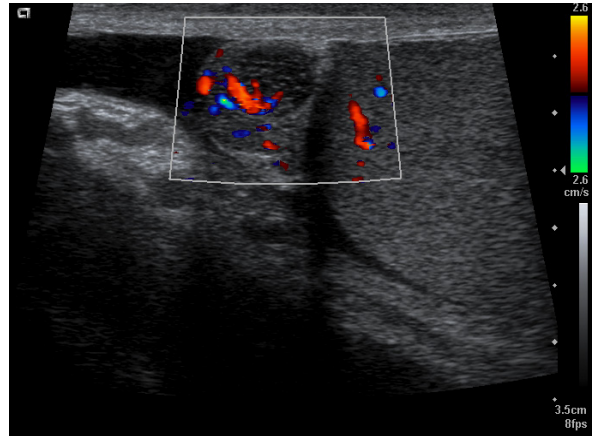
ACUSON X150 ultrasound system
Exceptional value – now and into the future

www.siemens.com/healthcare

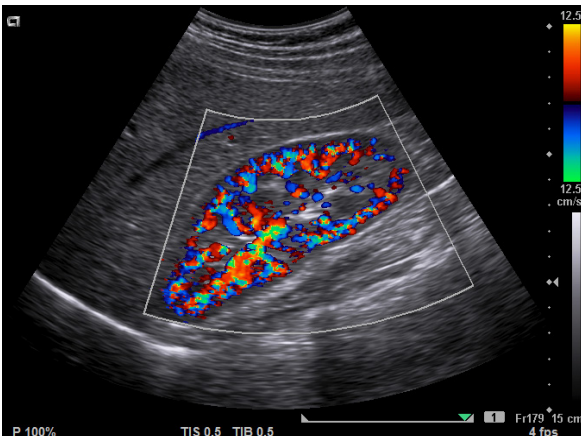
SIEMENS



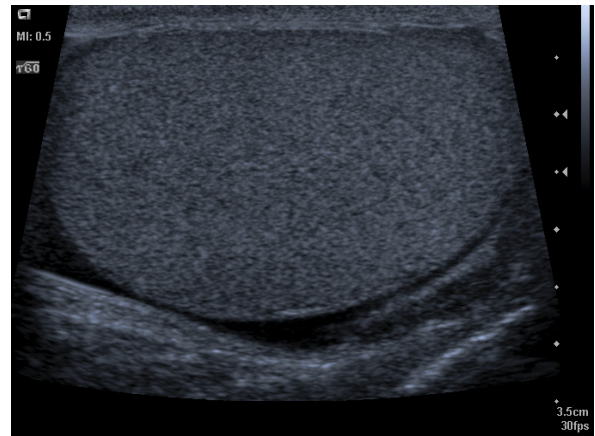
- Exceptional image quality demonstrates tissue variation within the prostate.



- High frequency imaging provides superior detail resolution and color sensitivity for epididymal assessment.



- Highly sensitive color Doppler demonstrates blood flow in the small vessels of the renal cortex.



- Virtual Format imaging increases the field of view allowing visualization of the entire testicle.

Standalone clinical images may have been cropped to better visualize pathology.

ACUSON, MultiHertz, TGO and X150 are trademarks of Siemens Medical Solutions USA, Inc.

Local Contact Information

Siemens Medical Solutions USA, Inc.
 51 Valley Stream Parkway
 Malvern, PA 19355-1406
 USA
 Phone: +1-888-826-9702
www.usa.siemens.com/healthcare

Europe: + 49 9131 84-0
 Asia Pacific: + 65 6490 6000

Global Business Unit Address/ Legal Manufacturer

Siemens Medical Solutions USA, Inc.
 Ultrasound
 1230 Shorebird Way
 Mountain View, CA 94043
 USA
 Phone: +1-888-826-9702
www.siemens.com/healthcare