

Breast Imaging



With the ACUSON Antares™ ultrasound system Siemens brings to market the industry's most innovative technologies specifically designed for the breast imaging specialists. The Breast Imaging Application includes eSie Touch elasticity imaging, Fatty Tissue Imaging, and Advanced SieClear spatial compounding technology. These complementary imaging techniques lead the industry in increasing diagnostic findings and confidence as a complete clinical solution specifically designed for breast imaging. Secondary applications include Thyroid, Peripheral Vascular, and Musculoskeletal imaging.

Highlights

eSie Touch™ elasticity imaging:

Unique real-time qualitative imaging method that calculates and displays the relative stiffness of tissue. The live dual image display of the elastogram and the standard B-mode image enhances ease of use and provides quantitative comparison with area and distance ratio measurements. Unique mapping options in grayscale and color are also available.

Fatty Tissue Imaging:

A speed-of-sound adaptation specifically designed for fatty tissue. Optimizes the image in real-time to enhance B-mode image quality with improved lateral and contrast resolution for superior ultrasound imaging of the fatty breast.

Advanced SieClear™ spatial compounding:

This real-time compounding technique applies industry-first 13 lines of sight at greater steering angles to improve contrast resolution and border detection. Siemens' Dynamic TCE™ tissue contrast enhancement algorithm simultaneously achieves speckle reduction, contrast enhancement and improvement in coherence of anatomical structures. Tissue stabilization reduces the artifacts seen in compounded images, yielding unprecedented image clarity.

SieScape™ panoramic imaging:

Provides extended field of view images acquired with real-time high-resolution grayscale imaging. Allows display and measurement of large structures, providing a global view for orientation. Also available for Power Doppler imaging.

Virtual Format Imaging:

Provides 2D beam steering including wider field of view, trapezoidal image format for visualizing large superficial structures.

ACUSON Antares ultrasound system
Industry-leading dedicated platform for breast imaging



eSie Touch elasticity imaging

- Improves border delineation of this biopsy-proven invasive ductal carcinoma. Live dual imaging provides real time comparison of elastogram to standard 2D imaging.



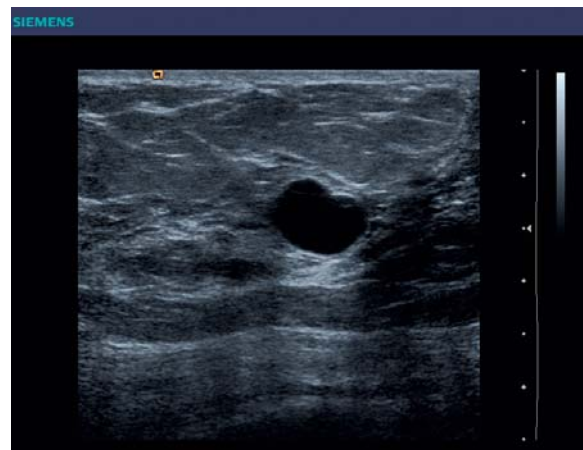
eSie Touch elasticity imaging

- Provides additional qualitative information by demonstrating the typical internal characteristics pattern of three cysts.



Fatty Tissue Imaging

- Allows for speed of sound correction for improved 2D resolution, resulting in easy identification of tiny spicules not well visualized by conventional 2D imaging.



Advanced SieClear spatial compounding with Dynamic TCE technology

- Enhances the contrast resolution within the breast tissue, allowing for improved border detection and posterior cyst enhancement.

Global Siemens Healthcare

Siemens AG
Wittelsbacherplatz 2
80333 Muenchen
Germany

Global Siemens Healthcare Headquarters

Siemens AG
Healthcare Sector
Henkestr. 127
91052 Erlangen
Germany
Phone: +49 9131 84-0
www.siemens.com/healthcare

Legal Manufacturer

Siemens Medical Solutions USA, Inc.
Ultrasound
1230 Shorebird Way
Mountain View, CA 94043 USA
Phone: +1-888-826-9702
www.siemens.com/healthcare

Local Contact Information

Siemens Medical Solutions USA, Inc.
51 Valley Stream Parkway
Malvern, PA 19355-1406 USA
Phone: +1-888-826-9702
www.usa.siemens.com/healthcare

Europe: +49 9131 84-0
Asia Pacific: +65 6490 6000
Latin America: +1-786-845-0697

Standalone clinical images may have been cropped to better visualize pathology.

ACUSON, Antares, Advanced SieClear, Dynamic TCE, eSie Touch, and SieScape are trademarks of Siemens Medical Solutions USA, Inc..