

Cardiology

REAL SOLUTIONS

Understanding challenges
Providing answers
Improving outcomes



The ACUSON X300™ ultrasound system provides the robust imaging performance and versatility needed across a broad range of cardiac patients. The X300 system incorporates advanced features such as spectral and color DTI™ Doppler tissue imaging for excellent myocardial visualization and integrated stress echo for a more complete assessment. TGO technology and DICOM structured reporting enhance workflow while the ErgoDynamic™ imaging system design improves user comfort.

Highlights

MultiHertz™ Multiple Frequency Imaging:

Provides a range of user selectable frequencies to optimize resolution, enhancing the versatility of each wideband transducer.

Tissue Harmonic Imaging:

Choice of filtered or phase inversion harmonics provides optimal contrast resolution, clutter reduction and high frame rates.

AutoColor™ Technology:

Optimizes color Doppler for varying flow states for improved spatial and temporal resolution.

TGO™ Tissue Grayscale Optimization Technology:

Shortens exam time, reduces repetitive motion and increases diagnostic confidence with consistently optimized exams across patients, operators and applications at the touch of a button.

DIMAQ-IP Workstation:

Provides easy access and archival of patient demographic data, clinical images and report data.

DICOM Structured Reporting:

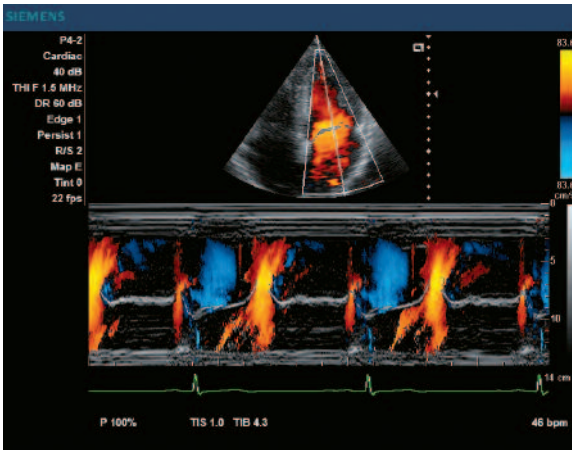
Streamlines clinical reporting by automatically transferring patient and calculation data to cardiac reporting packages in DICOM format.

ACUSON X300 ultrasound system

The versatile, compact platform for today's broad range of cardiac imaging challenges.

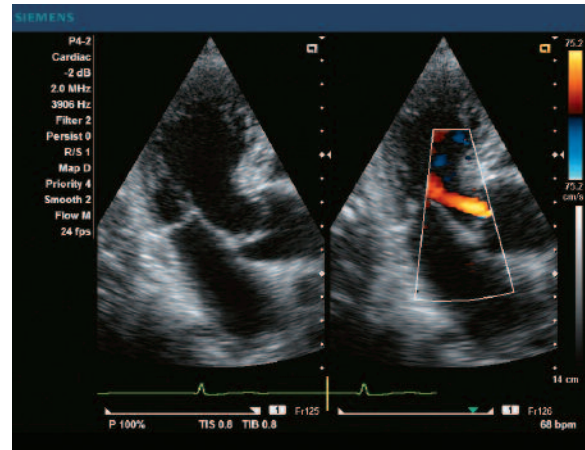
www.siemens.com/medical

SIEMENS
medical



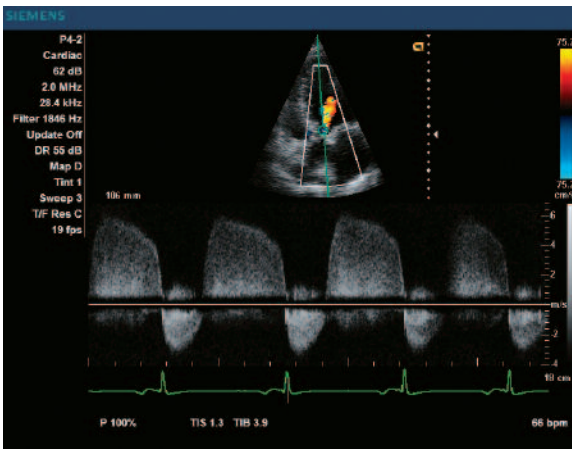
Color M-mode Imaging

- High temporal resolution of color M-mode highlights left ventricular inflow.



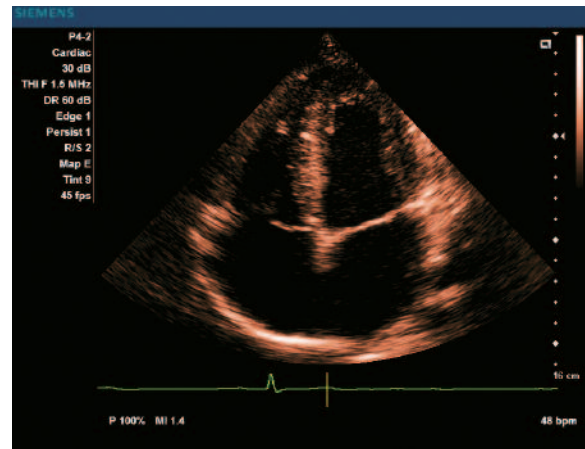
Dual Screen Image

- Dual screen imaging highlights 2D and Color Doppler Velocity in this patient with aortic insufficiency.



Continuous Wave Doppler

- Extremely sensitive CW Doppler easily demonstrates a high velocity aortic insufficiency jet.



Apical 4 Chamber View

- Excellent detail resolution using Tissue Harmonic Imaging is demonstrated in this Apical 4 Chamber image.

ACUSON, AutoColor, DTI, ErgoDynamic, MultiHertz, TGO and X300 are trademarks of Siemens Medical Solutions USA, Inc.

© 04.2007, Siemens Medical Solutions USA, Inc.
Order No. A91US-61-1C-4A00
Printed in the USA
WS 0407 10.0

Headquarters

Siemens Medical Solutions USA, Inc.
51 Valley Stream Parkway
Malvern, PA 19355-1406 USA
Telephone: +1-888-826-9702
www.usa.siemens.com/medical

Europe: +49 9131 84-0
Asia Pacific: +65 6341 0990
Latin America: +1-786-845-0697

USA

Siemens Medical Solutions USA, Inc.
Ultrasound Division
1230 Shorebird Way
P.O. Box 7393
Mountain View, CA 94039-7393 USA
Telephone: +1-888-826-9702