



SIEMENS

General Imaging

The Best of What Matters Most: A Smart Solution for General Imaging

ACUSON X600™ Ultrasound System

Without compromise, the ACUSON X600 ultrasound system delivers what matters most: unparalleled quality of patient care and industry leading system reliability.

Engineered on a robust system architecture and with advanced state of the art technologies migrated from our premium systems, the ACUSON X600 system sets a new standard of “standard” in imaging performance and workflow efficiencies. Giving you the freedom to grow and adapt to the clinical demands in General Imaging.



Advanced Imaging

We believe you want to put your money where it matters most. That's why the ACUSON X600 system is built with an advanced imaging engine packed with premium technologies to give you the diagnostic confidence you need. Superb 2D imaging resulting from features like Advanced SieClear™ spatial compounding and Dynamic TCE™ tissue contrast enhancement technology provide exceptional detail and contrast resolution.



Built to Work Smart

With thoughtful engineering to create true value, the ACUSON X600 system offers reliability, ergonomic design and efficient workflow. The system provides quick access to frequently used controls and multiple customizations of imaging presets including measurement and reporting packages. Smart productivity features like TGO™ tissue grayscale optimization technology provides one button optimization to adjust brightness and equalize overall gain for a more streamlined scanning experience.

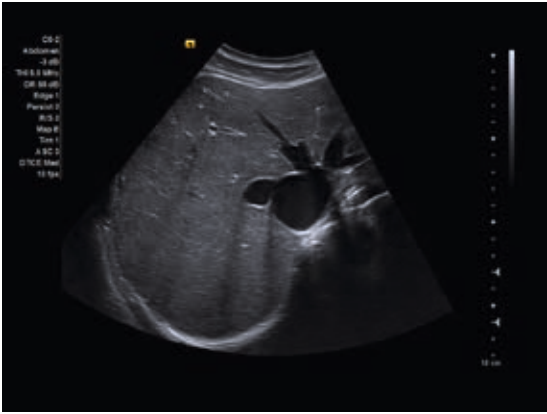


Progress and Protection

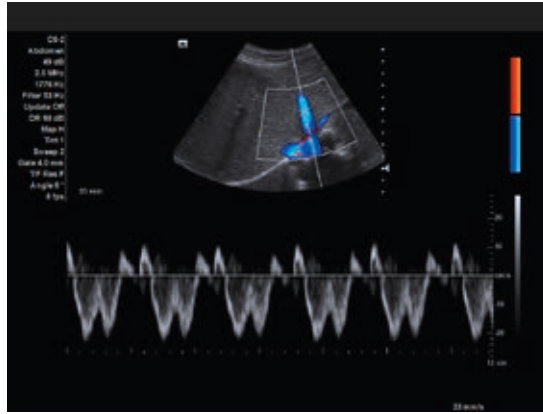
Built on the solid foundation of proven reliability, the ACUSON X600 system delivers dependability so you can deliver the same to your patients. With low cost of ownership, it is a cost-effective core solution that can evolve and adapt with your practice.

The ACUSON X600 system gives you the freedom to choose a cost-effective, smart solution without compromises.

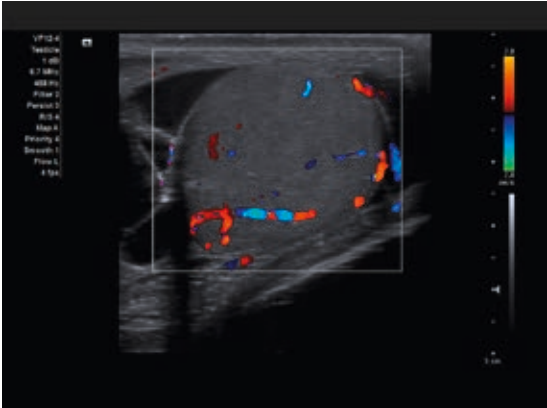
Answers for life.



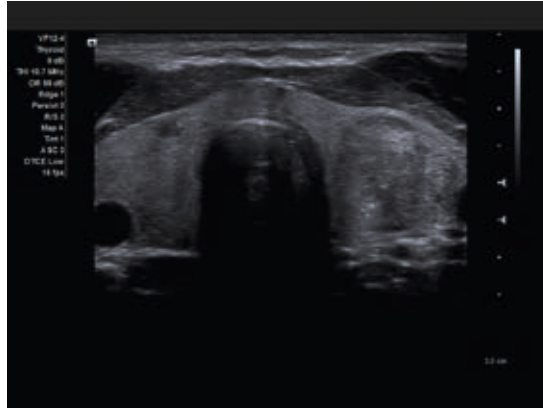
Left:
Hepatic vein
confluence



Right:
Color and pulsed
wave Doppler
of hepatic vein



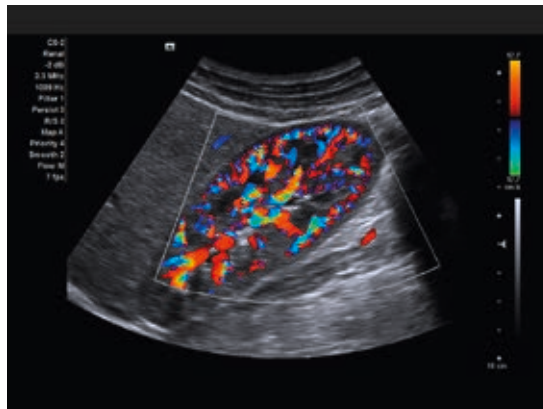
Left:
Color Doppler of
testicular vessels



Right:
Multiple, solid
thyroid nodules



Left:
Heterogeneous
liver with fatty
infiltration



Right:
Color Doppler of
intrarenal vessels

ACUSON X600, Advanced SieClear, Dynamic TCE, and TGO are trademarks of is a trademark of Siemens Medical Solutions USA, Inc.

Global Siemens Headquarters
Siemens AG
Wittelsbacherplatz 2
80333 Muenchen
Germany

**Global Siemens Healthcare
Headquarters**
Siemens AG
Healthcare
Henkestraße 127
91052 Erlangen
Germany
Phone: +49 9131 84-0

Legal Manufacturer
Siemens Medical Solutions USA, Inc.
Ultrasound
685 E. Middlefield Road
Mountain View, CA 94043
USA
Phone: 1-888-826-9702
www.siemens.com/ultrasound

Order No. A91US-323-1C-4A00 | Printed in Germany | CC US 2695 1214 | © 12.2014, Siemens Medical Solutions USA, Inc.