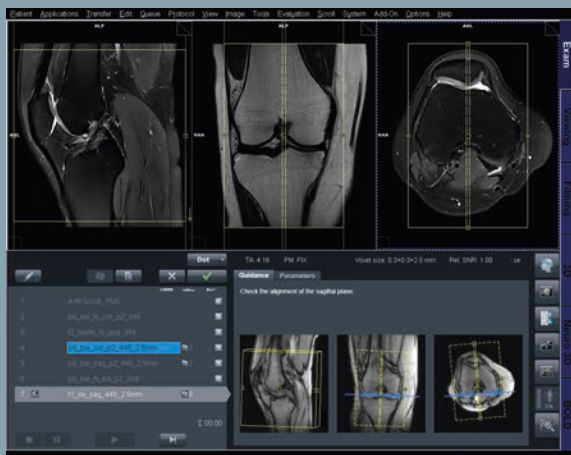


The Dot Productivity Pack consists of the following Dot Engines and is exclusively available for MAGNETOM ESSENZA:

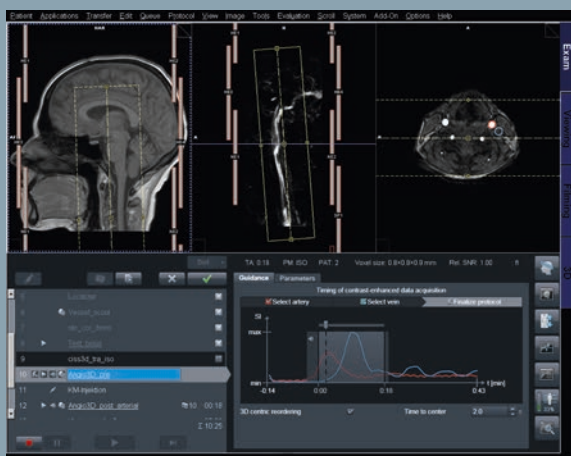


Knee Dot engine

Improved evaluation of soft tissue in proximity of orthopedic MR-conditional metal implants, due to less susceptibility artifacts with **syngo WARP***.

Automatic positioning of slices for reproducible joint orientation in the image – with **AutoAlign**.

Cover the anatomy you need, automatically and consistently for every patient – with **AutoCoverage**.



Angio Dot engine

Comprehensive, unique guidance for each individual workflow step for intuitive, accurate and consistent contrast timing – with **Guidance View**.

Automatic detection of arterial/venous timing window and automatic adaption of scan parameters – with **Test Bolus**.

Automatic anatomical or angiographic composing of multiple adjacent coronal or sagittal images – with **syngo Inline Composing**.



Abdomen Dot engine

Perform “hassle-free” breath-hold imaging for optimal timing of scanning and breathing – with language-specific **Auto Voice Commands**.

Get full diagnostic information through consistent contrast timing – with **Auto Bolus Detection**.

Adapt the scan strategy to clinical needs, e.g. just add an MRCP or Diffusion easily – with a single mouse click and the unique **Dot Decisions Points**.

PM+DOWKFD+DGTDW
 PM+DOWKFD+PE+
 +NVW
 (OD
 +PD
 KR
 VPM/FRPKDOWKFD

GR&P | |WGIP | DI
 && | |PM+DOWKFD+PE+ |

*The MRI restrictions (if any) of the metal implant must be considered prior to patient undergoing MRI exam. MR imaging of patients with metallic implants brings specific risks. However, certain implants are approved by the governing regulatory bodies to be MR conditionally safe. For such implants, the previously mentioned warning may not be applicable. Please contact the implant manufacturer for the specific conditional information. The conditions for MR safety are the responsibility of the implant manufacturer, not of Siemens.

Make complex exams routine.
For more productivity & more referrals