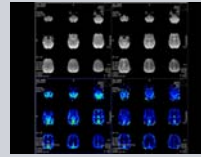
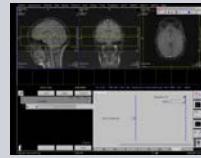
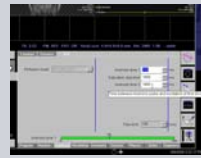
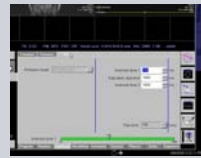


syngo ASL

1. Locate the ASL sequence under Head > Advanced applications libraries. Select the sequence labeled ep2d_tra_pasl.
2. Open the ASL sequence and position slices over the area of interest.
3. To change the ASL parameters, go to the contrast parameter tab and then the ASL sub-tab.
4. For parameter descriptions within the ASL sub-tab, float the cursor over the various parameter choices.
5. After positioning your slices over the desired location and adapting the ASL parameters (if necessary), start the measurement.
6. After measurement is complete, review inline maps in the Viewing Task Card.



Non-Contrast Brain Perfusion