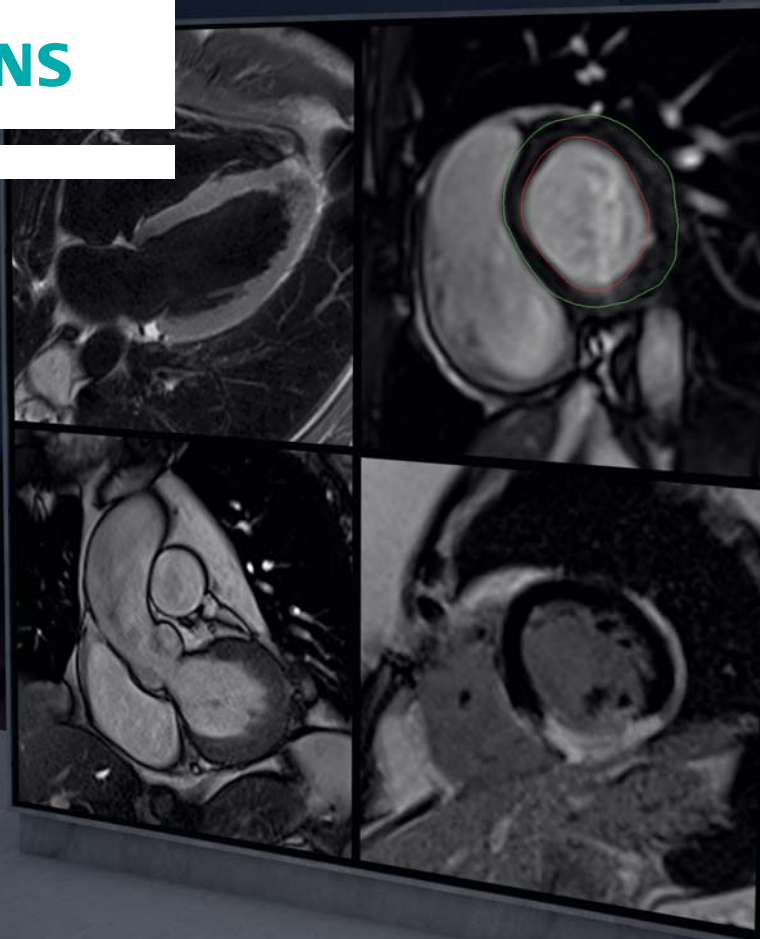


SIEMENS



www.siemens.com/CMR

Cardiovascular MRI with Siemens –
efficient, reliable, ready.

Answers for life.

Make CMR part of your routine. Get more information, in less time. Profit from Siemens CMR excellence.



Cardiac Dot Engine

With the Cardiac Dot Engine you can do a comprehensive cardiac examination in less time, with excellent results, consistently. The Cardiac Dot Engine guides users through the examination step-by-step. In addition, patient specific adaptation to the individual condition and workflow automation helps the user achieve fast and consistent results.

*“We increased our patient throughput in stress studies by 50%!”**

Matthew Benbow, Dr. Russell Bull
Royal Bournemouth Hospital, U.K.

Angio Dot Engine

The Angio Dot Engine is designed to empower the user to perform high spatial resolution contrast-enhanced MR angiography. This can often even be achieved using optimized protocols for low dosed contrast medium acquisitions. The timing of the contrast medium in MRA is a particular challenge. The Angio Dot Engine assists the user in achieving the optimal timing for contrast arrival, easily and consistently, and provides an interactive approach to contrast timing.



Cardiovascular MRI offers you not only excellent soft tissue differentiation, high spatial and temporal resolution, and 3D and 4D data acquisition, but it also provides information for a number of sophisticated clinical questions. This is why MRI is widely regarded as one of the most comprehensive diagnostic tools in cardiology, but also as a highly complex examination.

Siemens Healthcare offers you the tools to bring cardiovascular MRI into your clinical routine.

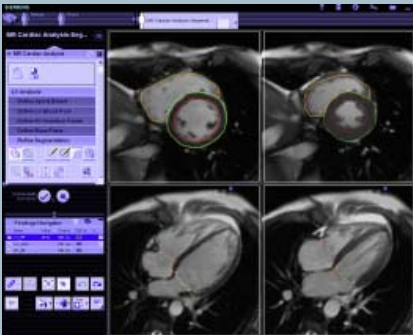


syngo NATIVE

syngo NATIVE is a contrast-free MR angiography technique for visualizing the vessels of the body. The package contains protocols tailored for use in different body regions (e.g. renal arteries, peripheral vessels). Inline Subtraction and Inline Maximum Intensity Projection (MIP) further simplify the workflow.

syngo TWIST

syngo TWIST is a time-resolved 3D MRA technique with very high temporal (sub-second) and spatial resolution (sub-millimeter) allows to capture the multiple arterial, mixed, venous phase images during the passage of a contrast agent through the vascular anatomy.



syngo.via

The *syngo.via*-based *syngo*.MR General Engine offers a rich suite of various functionalities to cover all of your routine reading and postprocessing needs. The MR Cardiac Reading workflow of this Engine links all the images and information to the series that is currently viewed. With its automatic layout formatting, the MR Cardiac Reading workflow ensures that a cardiac MR case is ready for review as soon as it is opened.

* The statements by Siemens' customers described herein are based on results that were achieved in the customer's unique setting. Since there is no "typical" hospital and many variables exist (e.g., hospital size, case mix, level of IT adoption) there can be no guarantee that other customers will achieve the same results.

Title images by courtesy of

Northwestern Memorial Hospital,
Chicago, USA
Helios Klinikum Berlin-Buch,
Berlin, Germany

Local Contact Information

In the USA

Siemens Medical Solutions USA, Inc.
51 Valley Stream Parkway
Malvern, PA 19355
Phone: +1 888-826-9702
Phone: +1 610-448-4500
Fax: +1 610-448-2254

In China

Siemens Medical Park, Shanghai
278, Zhouzhu Road
SIMZ, Nanhui District
Shanghai, 201318
P.R. China
Phone: +86-21-38895000
Fax: +86-10-28895001

On account of certain regional limitations of sales rights and service availability, we cannot guarantee that all products included in this brochure are available through the Siemens sales organization worldwide. Availability and packaging may vary by country and is subject to change without prior notice. Some/ALL of the features and products described herein may not be available in the United States.

All devices listed herein may not be licensed according to Canadian Medical Devices Regulations.

In Japan

Siemens-Asahi
Medical Technologies Ltd.
Takanawa Park Tower 14F
20-14, Higashi-Gotanda 3-chome
Shinagawa-ku
Tokyo 141-8644
Phone: +81 3 5423 8411

In Asia

Siemens Pte Ltd
Healthcare Sector
Regional Headquarters
The Siemens Center
60 MacPherson Road
Singapore 348615
Phone: +65 6490-6000
Fax: +65 6490-6001

The information in this document contains general technical descriptions of specifications and options as well as standard and optional features which do not always have to be present in individual cases.

Siemens reserves the right to modify the design, packaging, specifications and options described herein without prior notice. Please contact your local Siemens sales representative for the most current information.

Note: Any technical data contained in this document may vary within defined tolerances. Original images always lose a certain amount of detail when reproduced.

Please find fitting accessories:
www.siemens.com/medical-accessories

Global Business Unit

Siemens AG
Healthcare Sector
Magnetic Resonance
Henkestr. 127
DE-91052 Erlangen
Germany
Phone: +49 9131 84-0

Global Siemens Headquarters

Siemens AG
Wittelsbacherplatz 2
80333 Muenchen
Germany

**Global Siemens Healthcare
Headquarters**

Siemens AG
Healthcare Sector
Henkestrasse 127
91052 Erlangen
Germany
Phone: +49 9131 84-0
www.siemens.com/healthcare

Legal Manufacturer

Siemens AG
Wittelsbacherplatz 2
DE-80333 Muenchen
Germany