

SIEMENS
Healthineers



[siemens.com/biograph-horizon](https://www.siemens.com/biograph-horizon)

Biograph Horizon*

Clinical cases

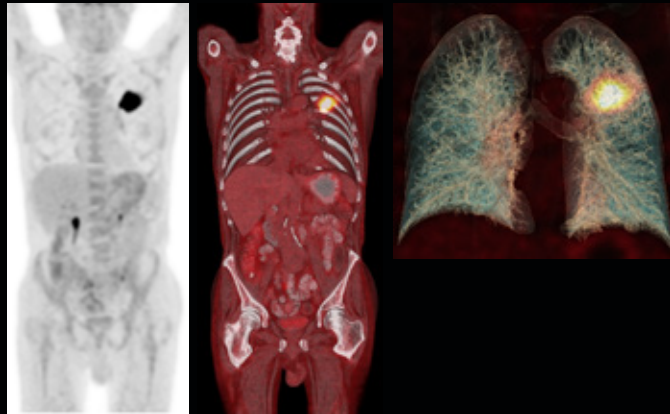
Excellent image quality in 60 seconds per bed position with ultraHD•PET

Indication: Lung cancer staging

Findings: Primary tumor in the left upper lobe of the lung. No evidence of metastases.

- 67 kg (148 lb) patient weight
- 4.1 MBq/kg
- 60 min. post-injection
- 88 cm scan range
- 60 s/bed position

CT with oral contrast medium, SAFIRE



*Data courtesy of Praxis Für Fusionierte
Bildgebung, Halle, Germany.*

High-resolution, 4 mm LSO crystal elements support detection of small lesions

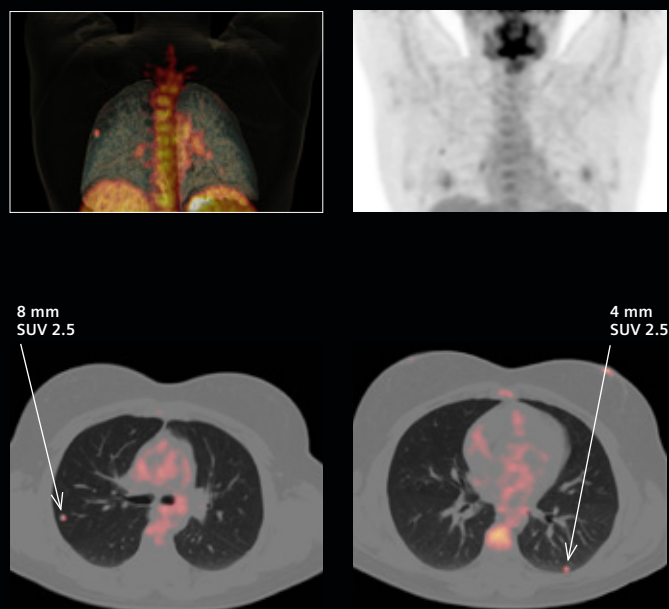
Indication: Characterization of lung lesions in a patient following treatment for cervical cancer (hysterectomy 6 months prior)

Findings: Four small (3-7 mm) nodular lung lesions are visible on CT; three with corresponding tracer uptake in PET (SUV_{max} 2.0-2.9). Additional avid lesions in the pelvis.

- 80 kg (176 lb) patient weight
- 4.1 MBq/kg
- 60 min. post-injection
- 79 cm scan range
- 90 s/bed position

Images reconstructed with ultraHD•PET based on acquisition by OptisoHD detectors with 4 mm crystal elements.

CT with oral contrast medium, SAFIRE



*Data courtesy of Praxis Für Fusionierte
Bildgebung, Halle, Germany.*

Excellent image quality in bariatric patient with Time-of-Flight

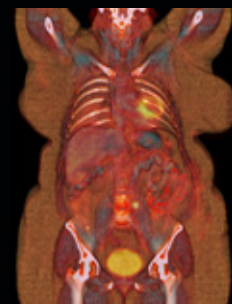
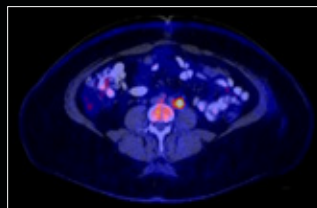
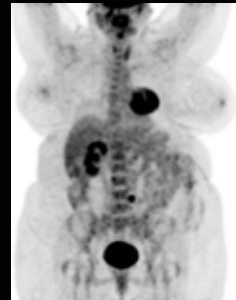
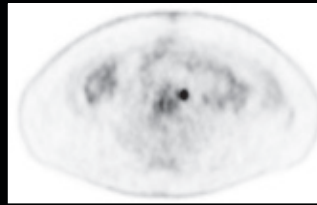
Indication: Status evaluation after endometrial and ureter carcinoma. Suspicious lung lesions were visualized in CT images.

Findings: No tracer uptake in the suspicious lung lesions, however, a glucose-avid lesion is visible in the lower abdomen left paravertebral, which is highly suggestive of a recurrent tumor.

- 105 kg (231 lb) patient weight, BMI 39
- 3.3 MBq/kg
- 80 min. post-injection
- 79 cm scan range
- 120 s/bed position

Images reconstructed with ultraHD•PET
CT with oral contrast medium

*Data courtesy of Praxis Für Fusionierte
Bildgebung, Halle, Germany.*



High lesion conspicuity with 4 mm crystal elements

Indication: Status evaluation after seed implantation (2003) and initial diagnosis of prostate cancer. Suspicious finding in the left seminal vesicle identified following a Choline PET/CT in July 2014.

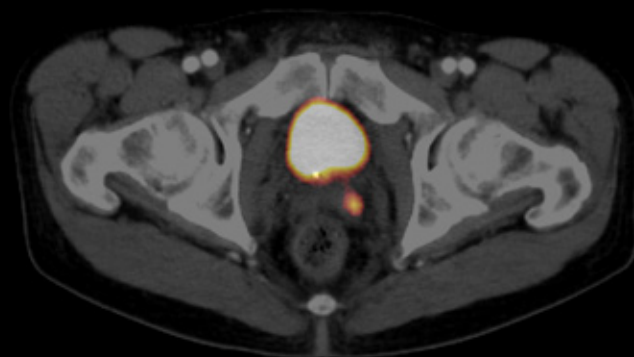
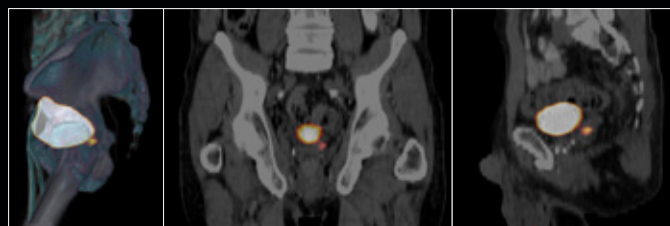
Findings: Focal uptake in the left seminal vesicle in concordance with previous Choline PET/CT and possible malignancy.

- 85 kg (187 lb) patient weight
- 1.6 MBq/kg ⁶⁸Ga PSMA
- 70 min. post-injection
- 88 cm scan range
- 120 s/bed position

Images reconstructed with ultraHD•PET
based on acquisition by OptisoHD
detectors with 4 mm crystal elements.

CT with oral and IV contrast medium

*Data courtesy of Praxis Für Fusionierte
Bildgebung, Halle, Germany.*



⁶⁸Ga PSMA referenced herein is not currently recognized by the US FDA as being safe and effective, and Siemens does not make any claims regarding its use.

Siemens Healthcare Headquarters

Siemens Healthcare GmbH
Henkestr. 127
91052 Erlangen
Germany
Phone: +49 9131 84-0
siemens.com/healthcare

Global Business Line

Siemens Medical Solutions USA, Inc.
Molecular Imaging
2501 North Barrington Road
Hoffman Estates, IL 60192
USA
Phone: +1 847 304-7700
siemens.com/mi

Order No. A91MI-10431-1C-7600 | Printed in USA | MI-2803.KBK.JV.TW.500 | © Siemens Healthcare GmbH, 08.2016

Trademarks and service marks used in this material are property of Siemens Healthcare GmbH. All other company, brand, product and service names may be trademarks or registered trademarks of their respective holders.

All comparative claims derived from competitive data at the time of printing. Data on file. Siemens reserves the right to modify the design and specifications contained herein without prior notice. As is generally true for technical specifications, the data contained herein varies within defined tolerances. Some configurations are optional. Product performance depends on the choice of system configuration.

Please contact your local Siemens sales representative for the most current information or contact one of the addresses listed below. Note: Original images always lose a certain amount of detail when reproduced.

All photographs © 2016 Siemens Healthcare GmbH.
All rights reserved.

* Biograph Horizon is not commercially available in all countries. Due to regulatory reasons, its future availability cannot be guaranteed. Please contact your local Siemens organization for further details.

siemens.com/mi