

syngo Fly Through

syngo® Fly Through offers new perspectives for enhanced diagnosis:

- Simulated views of e.g. the inside of bronchi, vessels, colon and any other hollow structures
- Multi-modality application for CT, MR and 3D-XA data
- Fully integrated into the familiar 3D workflow and user interface
- One click to action

syngo Fly Through

New perspective for enhanced diagnosis – fast and easy for routine use

Answers for life.

SIEMENS

High Quality and Real-Time Endoscopic View

Simulated display of internal anatomy without any invasion – even in areas where real endoscopic procedures may not be possible.

Easy-to-Use Familiar Orientation

The 3D endoscopic view is constantly correlated with three MPR displays (Multi Planar Reformations) in the familiar *syngo* four-quadrant display. The correlated MPR positions are color-coded and projected back on the endoscopic view.

Quick Endo View

One mouse click to switch on the corresponding endoscopic view at the point of interest defined in MPR display.

Easy Navigation

Use the fully interactive visualization cones in the correlated MPR displays or the patented SmartSelect® controls directly in the endoscopic view.

Multi-Modality Application

Create endoscopic views with, e.g. CTA, MRA or 3D-XA images.

Automatic Navigation

A single mouse click to virtually fly forwards or backwards through a tubular structure along the automatically determined path.

Wide Range of Interaction Modes

Such as fix-point rotation, zoom/pan, or push/pull/rotate.

Free Definition of Presets

For endoscopic views. Presets can be linked to DICOM series description for automatic reuse on subsequent examinations.

Path Creation

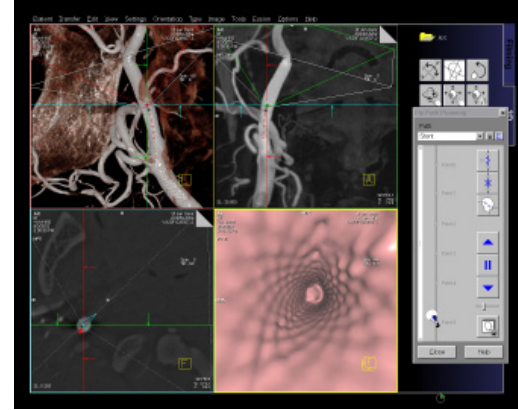
Insert key frames at various positions of 3D volume. Users can label key frames of interest with their comments, e.g. lesion position.

Different Fly Modes

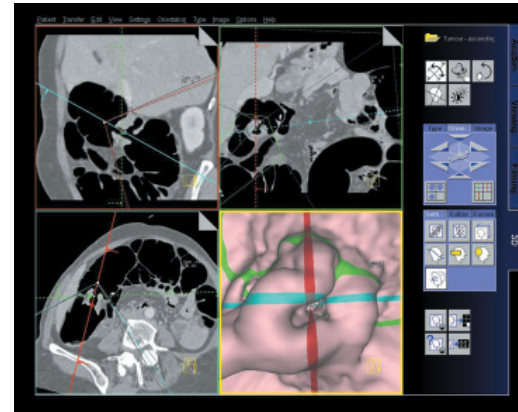
- Automatic forward/backward with adjustable velocity
- Jump between key frames
- Sliding control to adjust position along the path
- Choose view direction (forward/backward)

Documentation

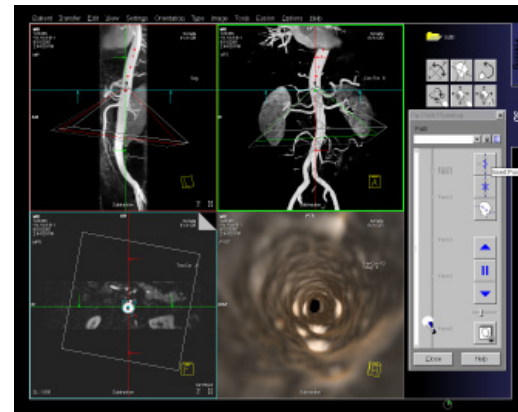
Results images can be copied on a film sheet, saved on CD or DVD, and exported to other DICOM nodes.



3D-XA: endoluminal visualization of a carotid stent



CT: tumor in the ascending colon with superimposed reference lines



MR: Fly Through the Aorta

Global Siemens Headquarters

Siemens AG
Wittelsbacherplatz 2
80333 Muenchen
Germany

Global Siemens Healthcare Headquarters

Siemens AG
Healthcare Sector
Henkestr. 127
91052 Erlangen
Germany
Phone: +49 9131 84-0
www.siemens.com/healthcare

Legal Manufacturer

Siemens AG
Wittelsbacherplatz 2
DE-80333 Muenchen
Germany