



SOMATOM Sensation 16 Application Guide

Special Protocols
Software Version A50

SIEMENS
medical

The information presented in this application guide is for illustration only and is not intended to be relied upon by the reader for instruction as to the practice of medicine. Any health care practitioner reading this information is reminded that they must use their own learning, training and expertise in dealing with their individual patients.

This material does not substitute for that duty and is not intended by Siemens Medical Solutions Inc., to be used for any purpose in that regard. The drugs and doses mentioned herein were specified to the best of our knowledge. We assume no responsibility whatsoever for the correctness of this information.

Variations may prove necessary for individual patients. The treating physician bears the sole responsibility for all of the parameters selected.

The pertaining operating instructions must always be strictly followed when operating the SOMATOM Sensation 16. The statutory source for the technical data are the corresponding data sheets.

To improve future versions of this application guide, we would highly appreciate your questions, suggestions and comments.

Please contact us:

CT Application Hotline:

Tel. no. +49-9191-18 80 88 (outside Germany)

0130-18 53 91 (in Germany)

Fax no. +49-9191-18 99 98

email: somatom.examinationprotocol@siemens.com

We express our sincere gratitude to the many customers who contributed valuable input. In addition I would like to stress at this point that the SOMATOM Sensation 16 Application Guide is based very much on the other SOMATOM Application Guides which have been written by Dr. Xiao-Yan Chen and Loke-Gie Haw.





Special thanks to Dr. med. Martin Heuschmid,
Universitätsklinikum Tübingen.

Editor: Bettina Klingemann








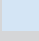

Overview

HeartViewCT	6
Bolus Tracking	40
Dental CT	48
Osteo CT	54
Pulmo CT	60
Perfusion CT	64
Dynamic Scanning	72
Interventional CT	74
Trauma	78
WholeBodyAngio	82
LungCARE	84
CT Colonography	86
Appendix	88

Content

 HeartViewCT	6
· The Basics	6
– Important Anatomical Structures of the Heart	6
– Cardiac Cycle and ECG	9
– Temporal Resolution	9
– Technical Principles	10
– Preview Series Reconstruction	11
– ECG Trace Editor	12
– ECG Pulsing	12
– CardioCARE	13
– CardioSharp	13
· How to do it	14
· CaScoreSpiStd	16
· CaScoreSpiStd0.5s	17
· CaScoreSeqStd	18
· CoronaryStd	20
· CoronaryStd0.5s	22
· CoronaryCARE	24
· CoronaryCARE0.5s	26
· CoronarySharp	28
· CoronarySharp0.5s	30
· ECGtrigCTA	32
· LungECGHiRes	35
· PulmonaryECG	36
· Additional Important Information	37
 Bolus Tracking	40
· The Basics	40
· How to do it	42
· CARE Bolus	42
· TestBolus	44
· Additional Important Information	46
 Dental CT	48
· The Basics	48
· How to do it	49
· Additional Important Information	51
 OsteoCT	54
· The Basics	54
· How to do it	55
· Additional Important Information	57

Content

	Pulmo CT	60
	· The Basics	60
	· How to do it	61
	· Additional Important Information	62
	Perfusion CT	64
	· The Basics	64
	· How to do it	66
	· Additional Important Information	69
	Dynamic Scanning	72
	· Scan Protocols	72
	Interventional CT	74
	· The Basics	74
	· How to do it	75
	– Biopsy	75
	– BiopsyCombine	76
	· Additional Important Information	77
	Trauma	78
	· The Basics	78
	· How to do it	79
	– Trauma	79
	– PolyTrauma	80
	· Additional Important Information	81
	WholeBodyAngio	82
	· Scan Protocol	82
	LungCARE	84
	· Indications	84
	CT Colonography	86
	· Scan Protocol	86
	Appendix	88
	· Osteo CT	88
	· Pulmo CT	90

HeartView CT

HeartView CT is a clinical application package specifically tailored to cardiovascular CT studies.

The Basics

Important Anatomical Structures of the Heart

Four chambers:

- Right atrium – receives the deoxygenated blood back from the body circulation through the superior and inferior vena cava, and pumps it into the right ventricle
- Right ventricle – receives the deoxygenated blood from the right atrium, and pumps it into the pulmonary circulation through the pulmonary arteries
- Left atrium – receives the oxygenated blood back from the pulmonary circulation through the pulmonary veins, and pumps it into the left ventricle
- Left ventricle – receives the oxygenated blood from the left atrium, and pumps it into the body circulation through the aorta

HeartView CT

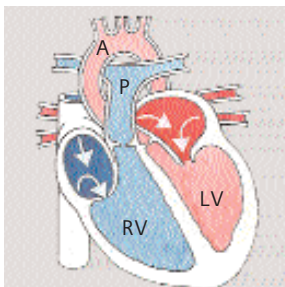


Fig. 1: Blood fills both atria

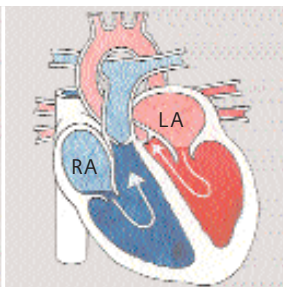


Fig. 2: Atria contract, blood enters ventricles

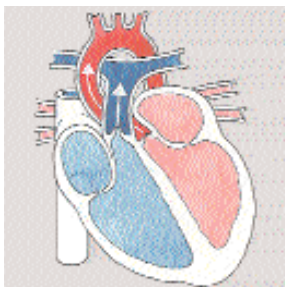


Fig. 3: Ventricles contract, blood enters into aorta and pulmonary arteries

- A: Aorta
- P: Pulmonary Artery
- RV: Right Ventricle
- LV: Left Ventricle
- RA: Right Atrium
- LA: Left Atrium

HeartView CT

Coronary arteries:

- Right coronary artery (RCA)

Right coronary artery supplies blood to the right atrium, right ventricle, a small part of the ventricular septum.

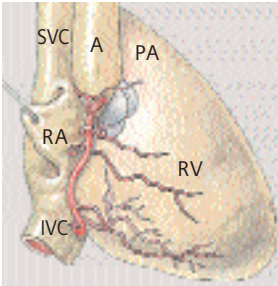


Fig. 4: Front view



Fig. 5: Conventional Angiography

SVC: Superior Vena Cava

IVC: Inferior Vena Cava

RA: Right Atrium

RV: Right Ventricle

A: Aorta

PA: Pulmonary Artery

- Left coronary artery (LCA)

Left coronary artery supplies blood to the left atrium, left ventricle and a large part of the ventricular septum.

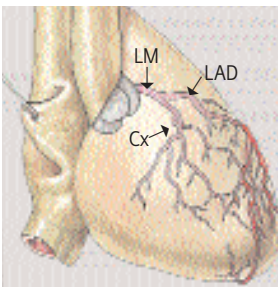


Fig. 6: Front view



Fig. 7: Conventional Angiography

LM: Left Main Artery

LAD: Left Anterior Descending Artery

Cx: Circumflex Artery

Cardiac Cycle and ECG

The heart contracts when pumping blood and rests when receiving blood. This activity and lack of activity form a cardiac cycle, which can be illustrated by an Electrocardiograph (ECG) (Fig. 8).

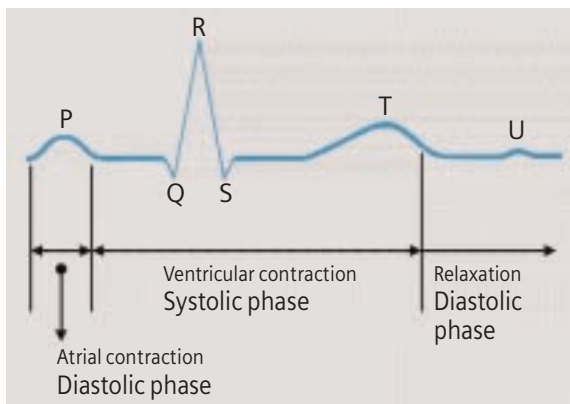


Fig. 8

To minimize motion artifacts in cardiac images, the following two requirements are mandatory for a CT system:

- Fast gantry rotation time in order to achieve fast image acquisition time
- Prospective synchronization of image acquisition or retrospective reconstruction based on the ECG recording in order to produce the image during the diastolic phase when the least motion happens.

Temporal Resolution

Temporal resolution, also called time resolution, represents the time window of the data that is used for image reconstruction. It is essential for cardiac CT imaging – the higher the temporal resolution, the fewer the motion artifacts. With the SOMATOM Sensation 16, temporal resolution for cardiac imaging can be achieved at down to 105 ms.

HeartView CT

Technical principles

Basically, there are two different technical approaches for cardiac CT acquisition:

- ECG triggered sequential scanning.
- Retrospectively ECG gated spiral scanning.

In both cases, an ECG is recorded and used to either initiate prospective image acquisition (ECG triggering), or to perform retrospective image reconstruction (ECG gating). A given temporal relation relative to the R-waves is predefined and can be applied with the following possibilities:

Relative – delay: a given percentage of R-R interval ($_RR$) relative to the onset of the previous or the next R-wave (Fig. 9, 10).

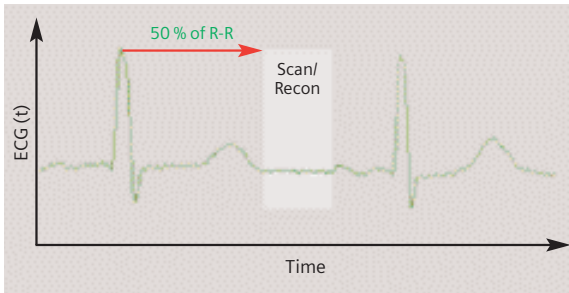


Fig. 9

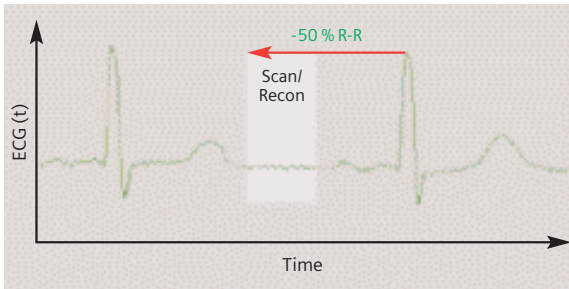


Fig. 10

Absolute – delay: a fixed time delay after the onset of the R-wave (Fig. 11).

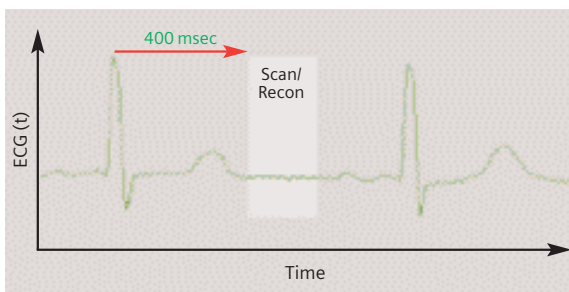


Fig. 11

Absolute – reverse: a fixed time delay prior to the onset of the next R-wave (Fig. 12).

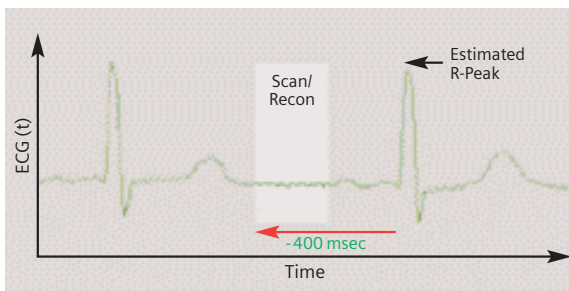


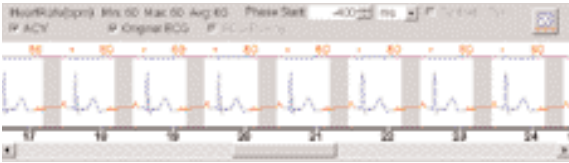
Fig. 12

Preview Series Reconstruction

Preview series can be used to define the optimal time window before the full series is reconstructed.

Click on the preview series button in the Trigger card. The slice position of the preview series is based on the currently displayed image in the tomogram segment, which has to be chosen by the user.

HeartView CT



ECG Trace Editor

The ECG trace editor is used for adaption of image reconstruction to irregular heart rates. This editing tool can be used after the scan is acquired. By using the right mouse menu on the Trigger card you can use several modification tools for the ECG Sync, such as Delete, Disable, Insert. To reset the ECG curve select the check box Original ECG.

ECG Pulsing

ECG Pulsing is a dedicated technique used for online dose modulation for Cardiac imaging. The tube current is ECG-controlled and reduced during systolic phases of the cardiac cycle while maintained normal during diastolic phases when best image quality is required. As shown in figure 2, essential dose reduction up to 50% can be achieved. It can be switched on/off by the user (Fig. 13).

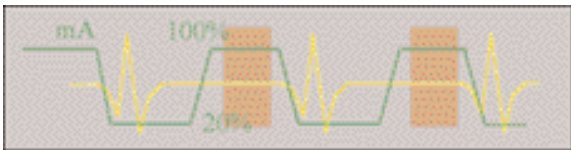


Fig. 13: Dose modulation with ECG pulsing.

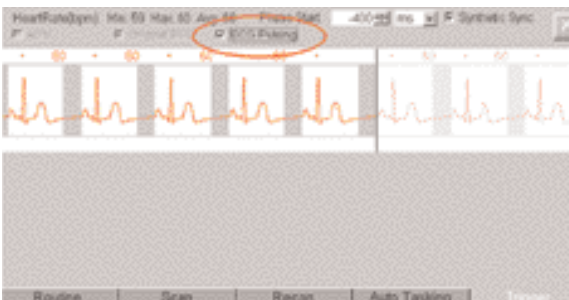


Fig. 14

CardioCARE

This is a dedicated cardiac filter which can reduce image noise thus provides the possibility of dose reduction. It is applied in a pre-defined scan protocol called "CoronaryCARE."

CardioSharp

This is a dedicated reconstruction kernel used for better edge definition in coronary artery imaging. It is applied in a pre-defined cardiac scan protocol called "CoronarySharp."

Image examples are shown in figure 15.

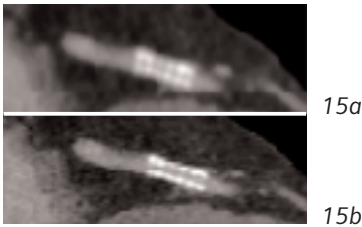


Fig. 15: Image reconstruction with (15b) and without (15a) Cardio Sharp kernel.

How to do it

Calcium Scoring

This application is used for identification and quantification of calcified lesions in the coronary arteries. It can be performed with both ECG triggering (sequential scanning) and gating (spiral scanning) techniques. The following scan protocols are predefined:

- **CaScoreSpiStd**
 - Standard spiral scanning protocol with ECG gating and a 0.42 s Rotation Time
- **CaScoreSpiStd0.5s**
 - Standard spiral scanning protocol with ECG gating and a 0.5 s Rotation Time
- **CaScoreSeqStd**
 - Sequential scanning protocol with ECG triggering

Hints in General:

- Kernel B35f is dedicated to calcium scoring studies. To ensure the best image quality and correlation to known reference data, other kernels are not recommended.
- Use the ECG triggered protocol generally except for patients with arrhythmia. Use the ECG gated protocol when accuracy and/or reproducibility are essential, e. g. follow-up studies of calcium scoring or comparison studies with conventional angiography.
- The protocol with 0.42 s Rotation Time can be applied to all examinations for HeartView CT.

Temporal resolution for cardiac imaging can be achieved at down to 105 ms.

The temporal resolution for the protocol with 0.5 s Rotation Time can be achieved at down to 125 ms.

- We recommend a tube voltage of 120 kV. If the tube voltage is lowered to 80 kV please use at least effective mAs 250. The use of 80 kV is not advised for large patients.

Placement of ECG Electrodes:

US Version (AHA standard)

White Electrode

on the right mid-clavicular line, directly below the clavicle

Black Electrode:

on the left mid-clavicular line, 6 or 7 intercostal space

Red Electrode:

right mid-clavicular line, 6 or 7 intercostal space



Placement of ECG Electrodes:

Europe Version (IEC standard)

Red Electrode

on the right mid-clavicular line, directly below the clavicle

Yellow Electrode:

on the left mid-clavicular line, 6 or 7 intercostal space

Black Electrode:

right mid-clavicular line, 6 or 7 intercostal space



CaScoreSpiStd

Indications:

This is a standard spiral scanning protocol, using an ECG gating technique for coronary calcium scoring studies, with a rotation time of 0.42 seconds.



*Topogram:
AP, 512 mm.
From the carina until
the apex of the heart.
A typical range of
15 cm covering the
entire heart can
be done in 11.6 s.*

	CaScoreSpiStd
kV	120
Effective mAs	133
Slice collimation	1.5 mm
Slice width	3.0 mm
Feed/Rotation	5.7 mm
Rotation time	0.42 sec.
Temporal resolution	up to 105 ms*
Kernel	B35f
Increment	1.5 mm
Image order	cr-ca
CTDI _w	9.6 mGy
Effective dose	Male: 2.1 mSv Female: 3.1 mSv

* Depends on heart rate.

CaScoreSpiStd0.5s

Indications:

This is a spiral scanning protocol, using an ECG gating technique for coronary calcium scoring studies, with a rotation time of 0.5 seconds.



*Topogram:
AP, 512 mm.
From the carina until
the apex of the heart.
A typical range of
15 cm covering the
entire heart can
be done in 11.7 s.*

	CaScoreSpiStd0.5s
<i>kV</i>	120
<i>Effective mAs</i>	133
<i>Slice collimation</i>	1.5 mm
<i>Slice width</i>	3.0 mm
<i>Feed/Rotation</i>	6.8 mm
<i>Rotation time</i>	0.5 sec.
<i>Temporal resolution</i>	up to 125 ms*
<i>Kernel</i>	B35f
<i>Increment</i>	1.5 mm
<i>Image order</i>	cr-ca
<i>CTDI_w</i>	9.6 mGy
<i>Effective dose</i>	Male: 2.1 mSv Female: 3.1 mSv

* Depends on heart rate.

CaScoreSeqStd

Indications:

This is a sequential scanning protocol using an ECG triggering technique for coronary calcium scoring studies.



*Topogram:
AP, 512 mm.
From the carina until
the apex of the heart.*

If you apply API for image acquisition, please make sure that the breath-hold interval in the Patient Model Dialog is longer than the total scan time, e. g. 50 s, otherwise the image acquisition will be interrupted by the default breath-hold interval. This does not apply when API is not activated.

	CaScoreSeqStd
<i>kV</i>	120
<i>Effective mAs</i>	30
<i>Slice collimation</i>	1.5 mm
<i>Slice width</i>	3.0 mm
<i>Feed/Scan</i>	18 mm
<i>Rotation time</i>	0.42 sec.
<i>Temporal resolution</i>	210 ms
<i>Kernel</i>	B35f
<i>Image order</i>	cr-ca
<i>CTDI_w</i>	2.2 mGy
<i>Effective dose</i>	Male: 0.5 mSv Female: 0.7 mSv

Coronary CTA

This is an application for imaging of the coronary arteries with contrast medium. It can be performed with both ECG triggering and gating techniques. The following scan protocols are predefined:

- **CoronaryStd**
 - Standard spiral scanning protocol with ECG gating, using a rotation time of 0.42 seconds.
- **CoronaryStd0.5s**
 - Standard spiral scanning protocol with ECG gating, using a rotation time of 0.5 seconds.
- **CoronaryCARE**
 - Spiral scanning protocol with Rotation Time 0.42 s and dedicated cardiac filter (Cardio CARE) which reduces image noise thus makes dose reduction possible.
- **CoronaryCARE0.5s**
 - Spiral scanning protocol with Rotation Time 0.5 s, and dedicated cardiac filter (Cardio CARE) which reduces image noise thus makes dose reduction possible.
- **CoronarySharp**
 - Spiral scanning protocol with Rotation Time 0.42 s and dedicated reconstruction kernel for better edge definition in coronary artery imaging.
- **CoronarySharp0.5s**
 - Spiral scanning protocol with Rotation Time 0.5 s and dedicated reconstruction kernel for better edge definition in coronary artery imaging.
- **ECGTrigCTA**
 - Sequential scanning protocol with ECG triggering, using a Rotation Time of 0.42 s.

General Hints:

- Generally speaking, the ECG gated protocol is recommended for premium image quality of the coronary arteries, and whenever 3D postprocessing, such as MPR, VRT or Fly Through, is required.
- Always use the ECG gated protocol for patients with arrhythmia.

CoronaryStd

Indications:

This is a standard spiral scanning protocol, using a Rotation Time of 0.42 s, with an ECG gating technique for coronary CTA studies.



*Topogram:
AP, 512 mm.
Approximately, from
the carina until the
apex of the heart.
A typical range of
12 cm covering the
entire heart can
be done in 18.7 s.*

	CoronaryStd
<i>kV</i>	120
<i>Effective mAs</i>	500
<i>Slice collimation</i>	0.75 mm
<i>Slice width</i>	1.0 mm
<i>Feed/Rotation</i>	2.8 mm
<i>Rotation time</i>	0.42 sec.
<i>Temporal resolution</i>	up to 105 ms*
<i>Kernel</i>	B30f
<i>Increment</i>	0.5 mm
<i>Image order</i>	cr-ca
<i>CTDI_w</i>	42.0 mGy
<i>Effective dose</i>	Male: 7.0 mSv Female: 10.2 mSv

* Depends on heart rate.

The reconstructions can be loaded in the 3D Card, MPR. Select the Range function and a predefined range, linked to the series, will pop up.

Please notice, if you are not satisfied with the Range preset adapt the parameters to your needs and link them to the series.

MIPthin: CoronaryStd	axial
<i>Image thickness</i>	3
<i>Distance between images</i>	3
<i>Number of images</i>	35

CoronaryStd0.5s

Indications:

This is a standard spiral scanning protocol, using a Rotation Time of 0.5 s, with an ECG gating technique for coronary CTA studies.



*Topogram:
AP, 512 mm.
Approximately, from
the carina until the
apex of the heart.
A typical range of
12 cm covering the
entire heart can
be done in 18.4 s.*

	CoronaryStd0.5s
<i>kV</i>	120
<i>Effective mAs</i>	500
<i>Slice collimation</i>	0.75 mm
<i>Slice width</i>	1.0 mm
<i>Feed/Rotation</i>	3.4 mm
<i>Rotation time</i>	0.5 sec.
<i>Temporal resolution</i>	up to 125 ms*
<i>Kernel</i>	B30f
<i>Increment</i>	0.5 mm
<i>Image order</i>	cr-ca
<i>CTDI_w</i>	42.0 mGy
<i>Effective dose</i>	Male: 7.0 mSv Female: 10.2 mSv

* Depends on heart rate.

The reconstructions can be loaded in the 3D Card, MPR. Select the Range function and a predefined range, linked to the series, will pop up.

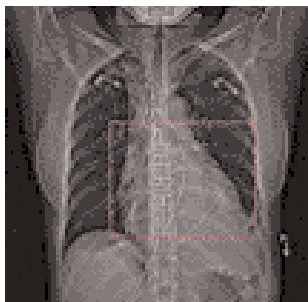
Please notice, if you are not satisfied with the Range preset adapt the parameters to your needs and link them to the series.

MIPthin: CoronaryStd0.5s	axial
<i>Image thickness</i>	3
<i>Distance between images</i>	3
<i>Number of images</i>	35

CoronaryCARE

Indications:

This is a spiral scanning protocol, using a Rotation Time of 0.42 s, ECG gating technique and a dedicated cardiac filter which can reduce images noise thus makes the dose reduction possible for coronary CTA studies.



*Topogram:
AP, 512 mm.
Approximately, from
the carina until the
apex of the heart.
A typical range of
12 cm covering the
entire heart can
be done in 18.7 s.*

	CoronaryCARE
kV	120
Effective mAs	267
Slice collimation	0.75 mm
Slice width	1.0 mm
Feed/Rotation	2.8 mm
Rotation time	0.42 sec.
Temporal resolution	up to 105 ms*
Kernel	B40f
Increment	0.5 mm
Image order	cr-ca
CTDI _w	22.4 mGy
Effective dose	Male: 3.8 mSv Female: 5.5 mSv

* Depends on heart rate.

HeartView CT

The reconstructions can be loaded in the 3D Card, MPR. Select the Range function and a predefined range, linked to the series, will pop up.

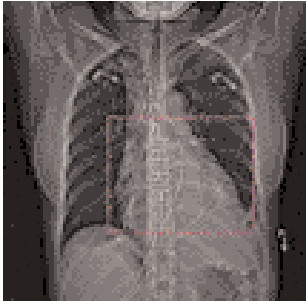
Please notice, if you are not satisfied with the Range preset adapt the parameters to your needs and link them to the series.

MIPthin: CoronaryCARE	axial
<i>Image thickness</i>	3
<i>Distance between images</i>	3
<i>Number of images</i>	35

CoronaryCARE0.5s

Indications:

This is a spiral scanning protocol, using a Rotation Time of 0.5 s, ECG gating technique and a dedicated cardiac filter which can reduce images noise thus makes the dose reduction possible for coronary CTA studies.



*Topogram:
AP, 512 mm.
Approximately, from
the carina until the
apex of the heart.
A typical range of
12 cm covering the
entire heart can
be done in 18.4 s.*

	CoronaryCARE0.5s
<i>kV</i>	120
<i>Effective mAs</i>	267
<i>Slice collimation</i>	0.75 mm
<i>Slice width</i>	1.0 mm
<i>Feed/Rotation</i>	3.4 mm
<i>Rotation time</i>	0.5 sec.
<i>Temporal resolution</i>	up to 125 ms*
<i>Kernel</i>	B40f
<i>Increment</i>	0.5 mm
<i>Image order</i>	cr-ca
<i>CTDI_w</i>	22.4 mGy
<i>Effective dose</i>	Male: 3.8 mSv Female: 5.5 mSv

* Depends on heart rate.

HeartView CT

The reconstructions can be loaded in the 3D Card, MPR. Select the Range function and a predefined range, linked to the series, will pop up.

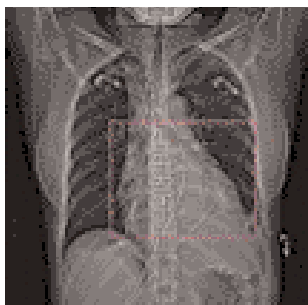
Please notice, if you are not satisfied with the Range preset adapt the parameters to your needs and link them to the series.

MIPthin: CoronaryCARE0.5s	axial
<i>Image thickness</i>	3
<i>Distance between images</i>	3
<i>Number of images</i>	35

CoronarySharp

Indications:

This is a spiral scanning protocol, using a Rotation Time of 0.42 s, ECG gating technique and a dedicated cardiac reconstruction kernel for better edge definition in coronary artery imaging.



*Topogram:
AP, 512 mm.
Approximately, from
the carina until the
apex of the heart.
A typical range of
12 cm covering the
entire heart can
be done in 18.7 s.*

	CoronarySharp
<i>kV</i>	120
<i>Effective mAs</i>	500
<i>Slice collimation</i>	0.75 mm
<i>Slice width</i>	1.0 mm
<i>Feed/Rotation</i>	2.8 mm
<i>Rotation time</i>	0.42 sec.
<i>Temporal resolution</i>	up to 105 ms*
<i>Kernel</i>	B46f
<i>Increment</i>	0.5 mm
<i>Image order</i>	cr-ca
<i>CTDI_w</i>	42.0 mGy
<i>Effective dose</i>	Male: 7.0 mSv Female: 10.2 mSv

* Depends on heart rate.

The reconstructions can be loaded in the 3D Card, MPR. Select the Range function and a predefined range, linked to the series, will pop up.

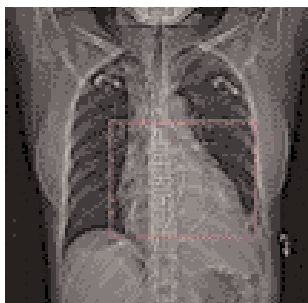
Please notice, if you are not satisfied with the Range preset adapt the parameters to your needs and link them to the series.

MIPthin: CoronarySharp	axial
<i>Image thickness</i>	3
<i>Distance between images</i>	3
<i>Number of images</i>	35

CoronarySharp0.5s

Indications:

This is a spiral scanning protocol, using a Rotation Time of 0.5 s, ECG gating technique and a dedicated cardiac reconstruction kernel for better edge definition in coronary artery imaging.



*Topogram:
AP, 512 mm.
Approximately, from
the carina until the
apex of the heart.
A typical range of
12 cm covering the
entire heart can
be done in 18.4 s.*

	CoronarySharp0.5s
<i>kV</i>	120
<i>Effective mAs</i>	500
<i>Slice collimation</i>	0.75 mm
<i>Slice width</i>	1.0 mm
<i>Feed/Rotation</i>	3.4 mm
<i>Rotation time</i>	0.5 sec.
<i>Temporal resolution</i>	up to 125 ms*
<i>Kernel</i>	B46f
<i>Increment</i>	0.5 mm
<i>Image order</i>	cr-ca
<i>CTDI_w</i>	42.0 mGy
<i>Effective dose</i>	Male: 7.0 mSv Female: 10.2 mSv

* Depends on heart rate.

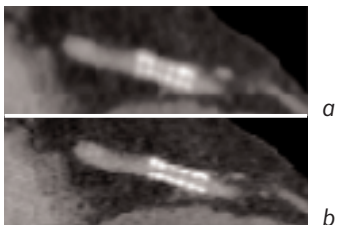


Image reconstruction with (b) and without (a) Cardio Sharp kernel.

The reconstructions can be loaded in the 3D Card, MPR. Select the Range function and a predefined range, linked to the series, will pop up.

Please notice, if you are not satisfied with the Range preset adapt the parameters to your needs and link them to the series.

MIPthin: CoronarySharp0.5s	axial
<i>Image thickness</i>	3
<i>Distance between images</i>	3
<i>Number of images</i>	35

ECGTrigCTA

Indications:

This is a sequential scanning protocol with an ECG triggering technique for coronary CTA studies. It could also be applied for aortic CTA studies, e. g. aortic dissection.



*Topogram:
AP, 512 mm.
From the aortic arch
until the apex of the
heart.*

If you apply API for a single breathhold acquisition, please make sure that the breathhold interval in the Patient Model Dialog is longer than the total scan time, e. g. 50 s, otherwise the image acquisition will be interrupted by the default breathhold interval. This does not apply when API is not activated.

For longer ranges, e. g. the entire thoracic aorta, that can not be acquired within a single breathhold, please ensure that the breathhold interval in the Patient Model Dialog is set up correctly, according to the patient's level of cooperation.

	ECGTrigCTA
<i>kV</i>	120
<i>Effective mAs</i>	120
<i>Slice collimation</i>	1.5 mm
<i>Slice width</i>	1.5 mm
<i>Feed/Scan</i>	18 mm
<i>Rotation time</i>	0.42 sec.
<i>Temporal resolution</i>	210 ms
<i>Kernel</i>	B40f
<i>Image order</i>	cr-ca
<i>CTDI_w</i>	8.64 mGy
<i>Effective dose</i>	Male: 1.5 mSv Female: 2.2 mSv

Aortic and Pulmonary Studies

This application can be used for high-resolution interstitial lung studies with an ECG triggering technique, or when imaging the aorta and pulmonary arteries with contrast medium and ECG gating technique. The following scan protocols are predefined:

- **LungECGHires**
 - Sequential scanning protocol with ECG triggering
- **PulmonaryECG**
 - Spiral scanning protocol with ECG gating

General Hints:

- The general purpose of these applications is to reduce motion artifacts in the lungs due to the cardiac pulsation.
- The LungECGHires protocol is recommended for detection and localization of the lesions adjacent to the heart or the interlobar fissures.
- The PulmonaryECG protocol is recommended for aortic or pulmonary studies, e. g. aorta dissection or pulmonary emboli.

LungECGHires

Indications:

This is a sequential scanning protocol with an ECG triggering technique for interstitial studies of the lungs, especially for the lesions in the pericardial region.



*Topogram:
AP, 512 mm.
From the apex of
the lung till the lung
base.*

	LungECGHires
<i>kV</i>	120
<i>Effective mAs</i>	120
<i>Slice collimation</i>	0.75 mm
<i>Slice width</i>	0.75 mm
<i>Feed/Scan</i>	9.0 mm
<i>Rotation time</i>	0.75 sec.
<i>Temporal resolution</i>	375 ms
<i>Kernel</i>	B80s
<i>Image order</i>	cr-ca
<i>CTDI_w</i>	10.1 mGy
<i>Effective dose</i>	Male: 1.1 mSv Female: 1.4 mSv

PulmonaryECG

Indications:

This is a spiral scanning protocol with an ECG gating technique for aortic and pulmonary studies, e. g. aortic dissection or pulmonary emboli.



*Topogram:
AP, 512 mm.
From the aorta arch
until the tip of the
sternum.
A typical range of
30 cm can be covered
in 17.3 s.*

	PulmonaryECG
<i>kV</i>	120
<i>Effective mAs</i>	200
<i>Slice collimation</i>	1.5 mm
<i>Slice width</i>	3.0 mm
<i>Feed/Rotation</i>	9.0 mm
<i>Rotation time</i>	0.5 sec.
<i>Temporal resolution</i>	up to 125 ms*
<i>Kernel</i>	B30f
<i>Increment</i>	2.0 mm
<i>Image order</i>	cr-ca
<i>CTDI_w</i>	14.4 mGy
<i>Effective dose</i>	Male: 5.7 mSv Female: 7.3 mSv

* Depends on heart rate.

Additional Important Information

By default, the “Synthetic Trigger” (ECG triggered scanning) or “Synthetic Sync” (ECG gated scanning) is activated for all predefined cardiac scan protocols (Fig. 1 and 2). And it is recommended to keep it always activated for examinations with contrast medium.

In case of ECG signal loss during the acquisition, this will ensure the continuation of the triggered scans or allows an ECG to be simulated for retrospective gating. If it is deactivated, the scanning will be aborted in case of ECG signal loss during the acquisition.



Fig. 1

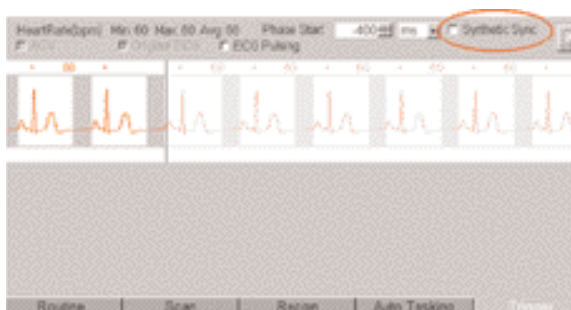


Fig. 2

HeartView CT

ACV (Adaptive Cardio Volume) (Fig. 3) is a dedicated algorithm for bi-phase image reconstruction. The image temporal resolution of 105 ms can be achieved with ACV. By default, it is switched on for all coronary CTA scan protocols, and switched off for all calcium scoring scan protocols. And it is not recommend to change this default setting.

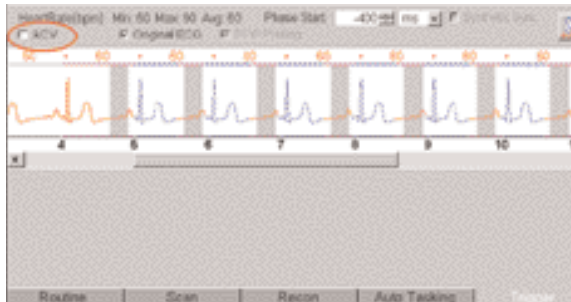


Fig. 3

Calcium Scoring evaluation is performed on a separate *syngo* task card:

1. The threshold of 130 HU is applied for score calculation by default, however, you can modify it accordingly.
2. In addition to the seeding method, you can use freehand ROI for the definition of lesions.
3. The separation and modification of lesions within a defined volume (depth in mm) can be performed not only on 2D slices, but also with 3D editing.
4. For easier identification of small lesions, you can blowup the display.
5. You can customize hospital/office information on the final report using Report Configuration.
6. You can generate HTML report including site specific information, free text and clinical images. This then can be saved on floppy disc and/or printed.
7. The results are displayed online in a separate segment including the following information:
 - Area (in mm^3)
 - Peak density (in HU)
 - Volume (in mm^3)
 - Calcium mass (mg calcium Hydroxyapatite)
 - Score (Agatston method)
8. The results can be printed on laser film, paper printer or saved into data base.

The Basics

The administration of intravenous (IV) contrast material during spiral scanning improves the detection and characterization of lesions, as well as the opacity of vessels. The contrast scan will yield good results only if the acquisition occurs during the optimal phase of enhancement in the region of interest. Therefore, it is essential to initiate the acquisition with the correct start delay. Since multislice spiral CT can provide much faster speed and shorter acquisition time, it is even more critical to get the right timing to achieve optimal results (Fig. 1a, 1b).

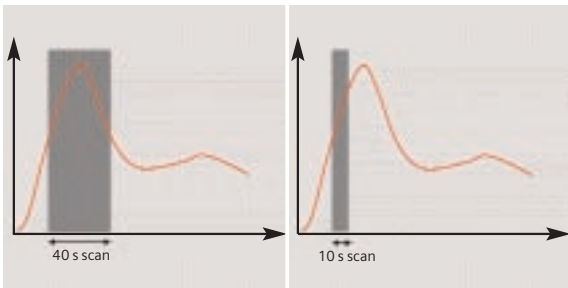


Fig. 1a: Longer scan time *Fig. 1b: Shorter scan time*

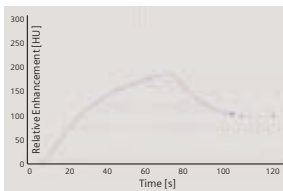
The dynamics of the contrast enhancement is determined by:

- Patient cardiac output
- Injection rate (Fig. 2a, 2b)
- Total volume of contrast medium injected (Fig. 3a, 3b)
- Concentration of the contrast medium (Fig. 3b, 4a)
- Type of injection – uni-phasic or bi-phasic (Fig. 4a, 4b)
- Patient pathology

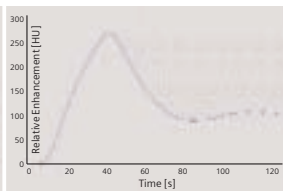
Bolus Tracking

Aortic time-enhancement curves after i.v. contrast injection (computer simulation*).

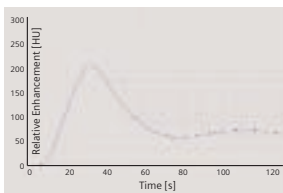
All curves are based on the same patient parameters (male, 60-year-old, 75 kg).



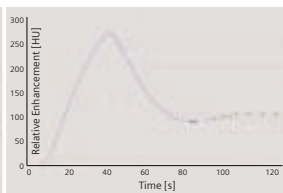
*Fig. 2a: 2 ml/s,
120 ml, 300 mg I/ml*



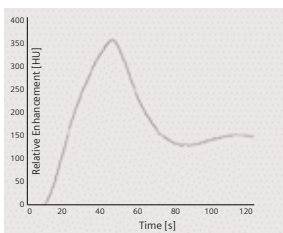
*Fig. 2b: 4 ml/s,
120 ml, 300 mg I/ml*



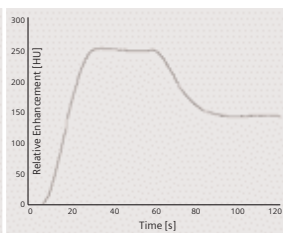
*Fig. 3a: 80 ml,
4 ml/s, 300 mg I/ml*



*Fig. 3b: 120 ml,
4 ml/s, 300 mg I/ml*



*Fig. 4a: Uni-phase
140 ml, 4 ml/s,
370 mg I/ml*



*Fig. 4b: Bi-phase
70 ml, 4 ml/s, plus 70 ml,
2 ml/s, 370 mg I/ml*

*Radiology 1998; 207:647-655

How to do it

To achieve optimal results in contrast studies, use of CARE Bolus is recommended. In case it is not available, use Test Bolus.

CARE Bolus

This is an automatic bolus tracking program, which enables triggering of the spiral scanning at the optimal phase of the contrast enhancement.

General Hints:

1. This mode can be applied in combination with any spiral scanning protocol. Simply insert "Bolus tracking" by clicking the right mouse button in the chronicle. This inserts the entire set up including pre-monitoring, i.v. bolus and monitoring scan protocol. You can also save the entire set up as your own scan protocols (please refer to the application guide for routine protocols).
2. The pre-monitoring scan is used to determine the level of monitoring scans. It can be performed at any level of interest. You can even predefine several pre-monitoring scans by defining a short range and then selecting the optimal image in which to place the trigger ROI. You can also increase the mAs setting to reduce the image noise when necessary.
3. To achieve the shortest possible spiral start delay (2 s), the position of the monitoring scans relative to the beginning of spiral scan must be optimized. A "snapping" function is provided:

Bolus Tracking

- After the Topogram is performed, the predefined spiral scanning range and the optimal monitoring position will be shown.
 - If you need to redefine the spiral scanning range, you should also reposition the monitoring scan in order to keep the shortest start delay time (2 s). (The distance between the beginning of the spiral scanning range and the monitoring scan will be the same).
 - Move the monitoring scan line **towards** the optimal position and release the mouse button, it will be snapped automatically. (Trick: if you move the monitoring scan line **away** from the optimal position the “snapping” mechanism will be inactive).
4. Place an ROI on the target area or vessel used for triggering. (The ROI is defined with double circles – the outer circle is used for easy positioning, and the inner circle is used for the actual evaluation). You can also zoom the reference image for easier positioning of the ROI.
 5. Set the appropriate trigger threshold, and initiate the contrast injection and monitoring scans at the same time.
During the monitoring scans, there will be simultaneous display of the relative enhancement of the target ROI. When the predefined density is reached, the spiral acquisition will be triggered automatically.
 6. You can also initiate the spiral any time during the monitoring phase manually – either by pressing the START button or by clicking the START key. If you do not want to use automatic triggering, you can deselect it.

TestBolus

Indications:

This mode can be used to test the start delay of an optimal enhancement after the contrast medium injection.

	TestBolus
<i>kV</i>	120
<i>Effective mAs</i>	30
<i>Slice collimation</i>	5.0 mm
<i>Slice width</i>	10.0 mm
<i>Feed/Scan</i>	0 mm
<i>Rotation time</i>	0.5 sec.
<i>Kernel</i>	B40f
<i>Cycle time</i>	2 sec.

Bolus Tracking

Application procedures:

1. Select the spiral mode that you want to perform, and then "Append" the TestBolus mode under **Special** protocols.
2. Insert the Test Bolus mode above the spiral mode for contrast scan by "cut/paste" (with right mouse button).
3. Perform the Topogram, and define the slice position for TestBolus.
4. Check the start delay, number of scans and cycle time before loading the mode.
5. A test bolus with 10-20 ml is then administered with the same flow rate as during the following spiral scan. Start the contrast media injection and the scan at the same time.
6. Load the images into the Dynamic Evaluation function and determine the time to the peak enhancement.

Alternatively, on the image segment, click "select series" with the right mouse button and position an ROI on the first image. This ROI will appear on all images in the test bolus series. Find the image with the peak HU value, and calculate the time "delta t" taken to reach the peak HU value (do not forget to add the preset start delay time). This time can then be used as the optimal start delay time for the spiral scan.

Additional Important Information

1. The preset start delay time for monitoring scans depends on whether the subsequent spiral scan will be acquired during the arterial phase or venous phase. The default value is 10 s. You can modify it accordingly.
2. It should be pointed out that when using "Test Bolus", there may be residual contrast in the liver and kidneys prior to scanning. This may result in an inaccurate arterial and equilibrium phase.
3. The trigger threshold is not an absolute value but a relative value compared to the non-contrast scan. E. g. if the CT value is 50 HU in the non-contrast image, and your trigger level is 100 MU, then the absolute CT value in the contrast image will be 150 HU.
4. If you change slice collimation, rotation time or kV in the spiral scanning protocol after CARE Bolus is inserted, a longer spiral start delay time will be the result, e. g. 14 s. This is due to the necessary mechanical adjustments, e. g. moving the slice collimators. Therefore, it is recommended that you modify the parameters of the spiral scanning **before** inserting the CARE Bolus.

5. If API is used in conjunction with CARE Bolus, the actual start delay time for the spiral will be as long as the length of API including the predefined start delay time. E. g. if the predefined the start delay is 2 s, and the API lasts 5 s, the spiral will start 5 s after the threshold is reached.
6. In case you have to interrupt the monitoring scanning due to injection problem, you can repeat it afterwards by inserting CARE Bolus again with a right mouse click. The same Topogram can still be used.

Dental CT

This is an application package for reformatting panoramic views and paraxial slices through the upper and lower jaw. It enables the display and measurement of the bone structures of the upper and lower jaw (especially for a 1:1 scale) as the basis for OR planning in oral surgery.

The Basics

What is the relevant anatomical information for oral surgery planning and dental implantation?

- Location of the socket for dental implant,
- Buccal and lingual thickness of the cortical component of the alveolar process,
- Position of the mandibular canal and the mental foramen,
- Extent of the nasal sinuses and
- Position and width of the floor of the nasal cavity.

What can Dental CT do?

- Reformatting of a curvilinear range of panoramic views along the jaw-bone.
- Reformatting of linear views of selectable length and at selectable intervals perpendicular to the panoramic views.
- Presentation of results in the form of multiple image display with reference markings.
- Images are documented on film in "life-size" so that the direct measurement of the anatomic information with a ruler is possible. The layout of the film sheet is predefined such that it can accommodate the maximum number of reformatted images.

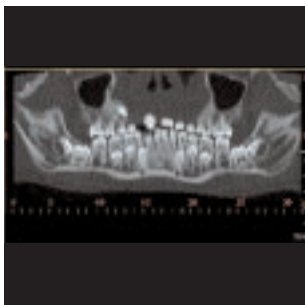


Fig. 1:
Panoramic view

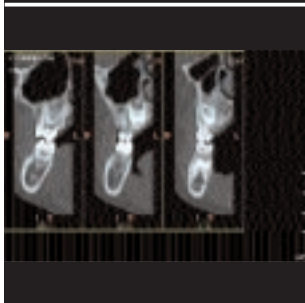


Fig. 2:
Paraxial view

How to do it

Scan Protocol:

	Dental
kV	120
Effective mAs	80
Slice collimation	0.75 mm
Slice width	0.75 mm
Feed/Rotation	6.0 mm
Rotation time	0.75 sec.
Kernel	H60s
Increment	0.5 mm
Image order	cr-ca
CTDI _w	17.9 mGy
Effective dose	Male: 0.3 mSv Female: 0.3 mSv

Dental CT

- It is mandatory to position the patient head in the center of the scan field – use the lateral laser light marker for positioning.
- Gantry tilt is not necessary since you have the possibility to tilt the reference line to generate an axial reformatted image at the desired plane. However, in order to minimize the scan length for the same anatomical region, it is recommended to position the patient's head at the appropriate scan plane whenever possible:
 - For the upper and lower jaw: occlusal plane in parallel to the scan plane.
 - For either jaw: jaw bone in parallel to the scan plane.
- It is recommended to end the exam first, and then start the Dental evaluation.

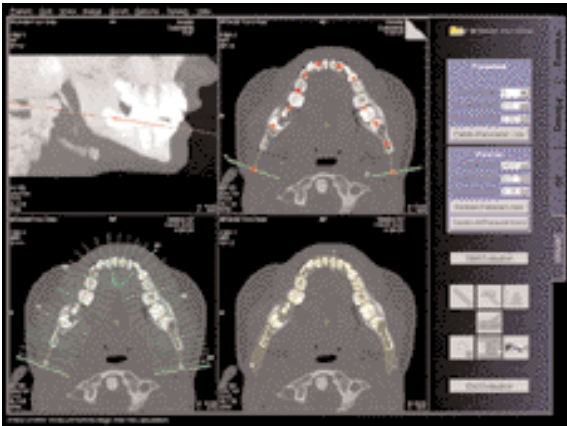


Fig. 3: Delineation of the desired views

Additional Important Information

- This protocol delivers high resolution images for dental CT evaluation, however, you can also reconstruct images with softer kernel, e. g. H20s, for 3D/SSD postprocessing.



*Fig. 4a:
AP-cranial view*



*Fig. 4b:
Caudal view*

- Image orientation:
 - In the paraxial view, a “B” indicates buccal and a “L” lingual. The lingual marker “+” must always be positioned at the tongue. If not, simply drag & drop it back.
 - In the panoramic view, a “B” stands for “Begin” and an “E” for “End”.
- Filming: for the maximum use of the film, film directly from the dental card instead of Patient Browser. For easy reprinting, the results of the latest Dental CT Film are stored in the Patient Browser in the folder “Film”.
- It is better to change the image windowing on the virtual film sheet.
- A semi-automatic detection tool can be used to mark and outline the mandibular canal on both paraxial and panoramic images for easy viewing and filming.

Dental CT

- Multiple paraxial ranges can be defined on one reference image by "cluster & copy function". I. e., you can group a number of paraxial lines and copy the lines to another location, e. g. over individual sockets at different locations (Fig.5).
- ROI definition for statistical evaluations and deletion of graphics are possible.

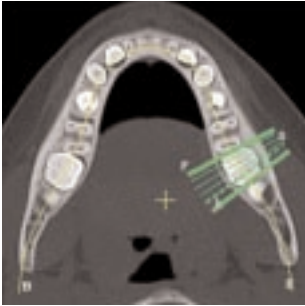


Fig. 5

Osteo CT

This is an application package for the quantitative assessment of vertebral bone mineral density for the diagnosis and follow-up of osteopenia and osteoporosis.

The Basics

This program enables the quantitative determination of bone mineral density of the spine in mg/ml of calcium hydroxyapatite (CaHA) for the diagnosis, staging, and follow-up of osteopenia and osteoporosis with CT. The patient is scanned together with the water- and bone-equivalent calibration phantom.

What is "T-score"?

This is the deviation of average BMD of the patient from that of a young healthy control. It represents bone loss with reference to the peak bone mass.

What is "Z-score"?

This is the deviation of average BMD of the patient from that of a healthy person of the same age. It is an indicator of biological variability.

Siemens Reference Data:

The Siemens reference data was acquired at three European centers, including 135 male and 139 female subjects, 20 to 80 years of age.

How to do it

	Osteo
<i>kV</i>	80
<i>Effective mAs</i>	125
<i>Slice collimation</i>	5.0 mm
<i>Slice width</i>	10 mm
<i>Feed/Scan</i>	0 mm
<i>Rotation time</i>	0.5 sec.
<i>Kernel</i>	S80f
<i>Image order</i>	cr-ca
<i>CTDI_w</i>	2.6 mGy
<i>Effective dose</i>	Male: 0.02 – 0.03 mSv Female: 0.03 – 0.03 mSv

	OsteoObese
<i>kV</i>	80
<i>Effective mAs</i>	350
<i>Slice collimation</i>	5.0 mm
<i>Slice width</i>	10 mm
<i>Feed/Scan</i>	0 mm
<i>Rotation time</i>	1.5 sec.
<i>Kernel</i>	S80s
<i>Image order</i>	cr-ca
<i>CTDI_w</i>	7.4 mGy
<i>Effective dose</i>	Male: 0.07 mSv Female: 0.07 – 0.2 mSv

Osteo CT

Patient positioning:

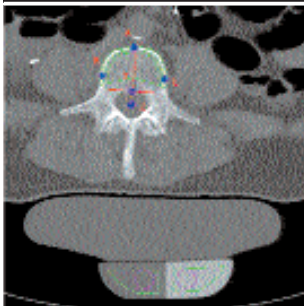
- Set the table height at 125. The gantry tilt will be available from -22° to $+22^{\circ}$.
- Patients should be positioned so they are as parallel to the patient table as possible. Support the knees to compensate for lordosis.
- The calibration phantom should be positioned directly below the target region. Put the Gel-pad between the calibration phantom and the patient to exclude air pockets.

Scanning:

- Typically, one scan each is performed at L1, L2 and L3 levels. It is recommended to use image comments L1, L2, L3 prior to scanning. These comments will be displayed with the Osteo evaluation results.
- Before ending the examination, you can drag & drop the chronicles to the topogram segment to get the Topographics, i. e. the cut lines for each vertebra on the topogram.
- Select the appropriate scan protocol according to the patient size, i. e. use "OsteoObese" for obese patient.
- Position the cut line of scanning through the middle of the vertebra, i. e. bi-sector between the angle of the upper and lower end plate.
- The phantom must be included in the FOV of the images for evaluation.
- It is recommended to end the exam first, and then start the Osteo evaluation.



*Fig. 1:
Topographic*



*Fig. 2:
Phantom inside
the FOV*

Additional Important Information

- Fractured vertebrae are not suited for Osteo CT evaluation since the more compact nature of these vertebrae result in bone mineral density value that is much higher than one would expect.

- How to save the results on your PC?
 - Select Option/Configuration from the main menu and click icon "CT Osteo".
 - Activate the checkbox "Enable Export of Results".
 - "Exit" the configuration dialog.
 - Call up the Osteo card and you will see the new icon "Export results" on the lower, right part of the screen.
 - Click this icon to copy the evaluation results to floppy disk (Note: with every mouse click on the icon, the previous result file will be appended).
 - The data file can be transferred to your PC for further evaluation, e. g. with MS Excel.

Note: for detailed information about the data file, please refer to the Appendix.

- It is recommended to film directly from the Osteo card. Select images or series with Edit/Select all, and click "film" icon, you will get a standard layout of 9 segments as seen in Fig. 3.

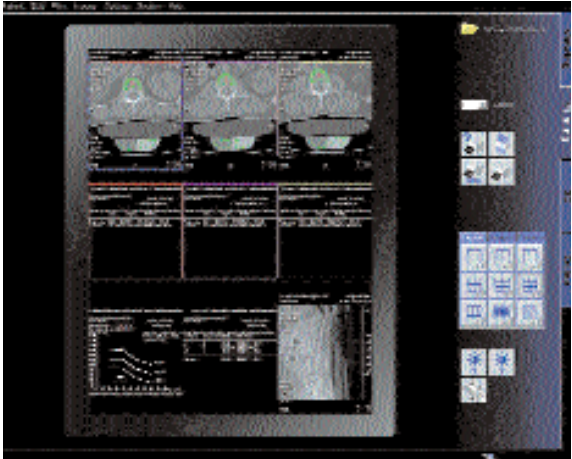


Fig. 3: Filming layout

Note: it is not recommended to use filming setting of 4 x 5 segments since the image text elements of the result image are overlapped and hard to read.

Pulmo CT

This is an application package, which serves for quantitative evaluation of the lung density to aid the diagnosis and follow-up of diffuse lung diseases, such as pulmonary emphysema, sarcoidosis, pan-bronchiolitis and silicosis.

The Basics

- No specific scan protocols were set up for this option. Scan protocols for routine thorax imaging can be used. The scan parameters used are dependent on the indications and objectives of the study design. For example, spiral mode for lung volume evaluation or HR sequence mode for interstitial lung diseases.
- Lung density is influenced by respiratory status (Fig.1).

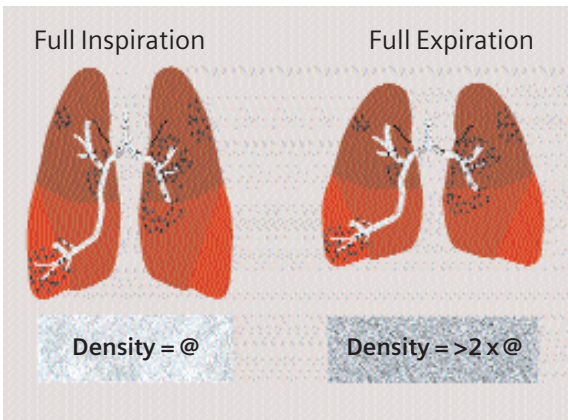


Fig. 1: Lung density at full inspiration/expiration

- Examinations should be acquired at the same respiratory level, usually at either full inspiration or full expiration. Studies had shown that reproducibility is high and is unlikely to be improved by using spirometric gating [1].

Literature

1. Repeatability of Quantitative CT Indexes of Emphysema in Patients

Evaluated for Lung Volume Reduction Surgery.

David s. Gierada et al, Radiology 2001 220: 448-454

Siemens Reference Data:

It was acquired from lung healthy individuals at 50% vital capacity. Since Pulmo CT program does not provide spirometric triggering for the acquisition of the data set, it is not meaningful to use Siemens reference data for comparison unless the data is acquired under the same conditions.

User-Specific Reference Data

It is possible to integrate in your own reference data, e. g. data acquired at full inspiration, for the evaluation. Please contact the local Siemens representative for further information.

How to do it

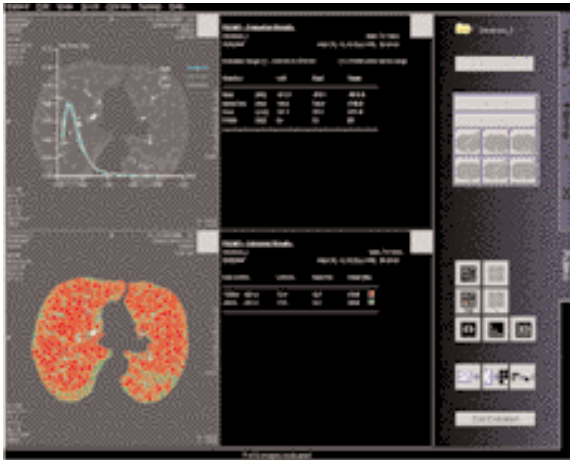
It is recommended to end the exam first, and then start the Pulmo evaluation.

Select the images that you want to evaluate, and activate the program by clicking on the "Pulmo" icon.

Additional Important Information

- How to export the evaluation results to a floppy disc?
 - Select Option/Configuration from the main menu and click icon “Pulmo”.
 - Activate the checkbox “Enable Export of Results”.
 - “Exit” the configuration dialog.
 - Call up the Pulmo card and you will see the new icon “Export results” on the lower, right part of the screen.
 - Click this icon to copy the evaluation results onto floppy disk. (Note: with every mouse click on the icon, the previous result file on the floppy will be appended).
 - The data file can be transferred to your PC for further evaluation, e. g. with MS Excel.
Note: for detail information about the data file, please refer to the Appendix.
- Standard and expert mode can be configured to your needs.
 - Select Option/Configuration/Pulmo.
For example, if you want to determine the percentage area of the lung within a specific HU range, use the card “Subranges” on the Configuration/Pulmo dialog.
- Color-coded display of HU subranges and percentiles is possible. This allows direct visualization of the different densities distribution within the lung.
- The auto-contour detection can be used as editing function for 3D postprocessing of lung images.

Pulmo CT



Pulmo CT task card.

Perfusion CT

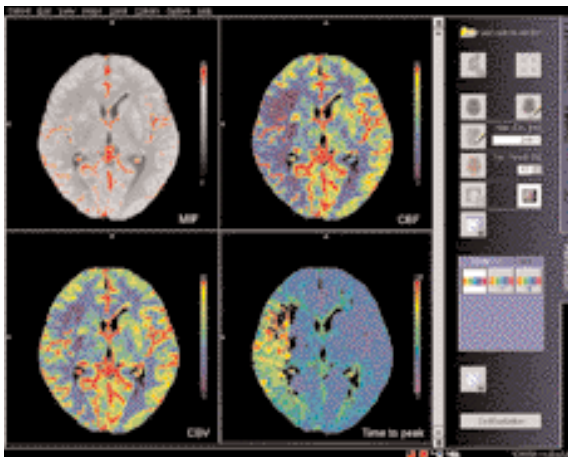
This is an application software package for the quantitative evaluation of dynamic CT data of the brain following injection of a highly concentrated iodine contrast bolus. The main application is in the differential diagnosis and management of acute ischemic stroke.

The Basics

- The software optimally supports the stringent time and workflow requirements in an emergency setting where time is brain.
- Parameters generated include among others cerebral blood flow (CBF), cerebral blood volume (CBV), the time to local perfusion onset (Time-to-Start) and the time to local perfusion peak (Time-to-Peak).

Example: A 44-year-old man was brought to the hospital about 2 hours after the start of severe neurological symptoms of stroke in the right hemisphere.

Perfusion CT



The CBF image shows a severe perfusion disturbance (flow close to zero) in the insular cortex and the posterior portion of the lentiform nucleus. In comparison to the left hemisphere the remaining supply area of the middle cerebral artery shows moderately reduced flow.

- The CBV image shows the same severe reduction in insular cortex and lentiform nucleus. In contrast to the CBF image, however, the blood volume in the remaining right MCA territory is close to normal, if it is compared to the same area on the left side.
- The time-to-peak image shows a general prolongation of values in the MCA territory indicating delayed bolus arrival.

How to do it

Scan protocols

There are two Scan protocols available:

BrainPerfCT, a non contrast study and a Dynamic Serio with 1.5 mm collimation and 2 times a 12 mm slice thickness.

BrainPerfSingle, a non contrast study and a Dynamic Serio with 5.0 mm collimation and one 10 mm slice thickness.

BrainPerfCT	NonContrast	DynSerio
<i>kV</i>	120	80
<i>Effective mAs</i>	260	140
<i>Slice collimation</i>	1.5 mm	1.5 mm
<i>Slice width</i>	9.0 mm	12.0 mm
<i>Feed/Scan</i>	18 mm	0 mm
<i>Rotation time</i>	1.0 sec.	0.5 sec.
<i>Cycle time</i>	3.0 sec.	0.75 sec.
<i>Kernel</i>	H30s	H30f
<i>Image order</i>	ca-cr	

BrainPerfSingle	NonContrast	DynSerio
<i>kV</i>	120	80
<i>Effective mAs</i>	260	168
<i>Slice collimation</i>	1.5 mm	5.0 mm
<i>Slice width</i>	9.0 mm	10.0 mm
<i>Feed/Scan</i>	18 mm	0 mm
<i>Rotation time</i>	1.0 sec.	0.5 sec.
<i>Cycle time</i>	3.0 sec.	0.75 sec.
<i>Kernel</i>	H30s	H30f
<i>Image order</i>	ca-cr	

Such a standard protocol may be slightly modified for specific reasons; e. g. the start delay can be increased by a few seconds for patients with very low cardiac output.

Perfusion CT

IV injection protocol	
Contrast medium	Non-ionic
Concentration	300 – 370 mg/ml
Injection rate	8 ml/sec.
Total volume	40 ml
Total injection time	~ 5 sec.
Start delay time	4 sec

The technique requires a short bolus. The original studies were performed mostly using 50 ml injected at 10 ml/s.

The routine application has shown, that by sacrificing some of the spatial resolution, the examination can also be done with smaller amounts of contrast (35 to 40 ml) and correspondingly smaller flow rates. The smaller the total amount the more helpful it is to consider a saline chaser bolus. In any case, a state-of-the-art power injector is recommended.

If a flow rate of 8 ml/s is considered not recommendable for a specific patient, the protocol can be reduced to 40 ml at 5ml/s. Image quality will be reduced but the technique will still be diagnostic.

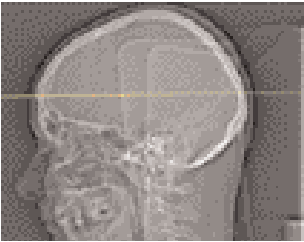
- Additional measures to facilitate the injection, like using a large gauge cannula (16 or 18 are usually sufficient) and warming the contrast media to body temperature to reduce its viscosity, should be considered.

Note: As with any contrast medium application, verify that the particular models and brands that you use in the chain injector/contrast medium/cannula are approved by their respective manufactures for the use with the parameters you select.

- Motion during acquisition must be avoided. Therefore, if at all possible you should try to explain the course of the examination to the patient and use additional head fixation in any case.

Perfusion CT

- The standard examination slice is best positioned such that it cuts through the basal ganglia at the level of the inner capsule. This selection includes those vascular territories of the brain that are frequently affected by perfusion impairment associated with acute stroke in the carotid territory.
- The slice should be selected “flatter” than in normal head CT scan, the angulation should be adjusted perpendicular to the occipital segment of the superior sagittal sinus well above the confluence of sinuses.
- The eye lens should never be positioned in the scan plane.



Example of a standard slice through the basal ganglia in a lateral topogram.

Additional Important Information

1. Why short injection times are necessary?

The brain has a very short transit time (approx. 3 to 5 seconds) and a relatively small fractional blood volume (approx. 2 to 5%). This requires a compact bolus for optimal time resolution and a certain minimum amount of contrast for optimal signal to noise ratio. Bolus definition can be significantly improved and the amount of contrast necessary reduced by using a saline chaser bolus with the same flow rate directly following the CM injection.

2. What do normal, contrast-enhanced and Perfusion CT images show?

In order to interpret Perfusion CT images correctly, it is essential to understand that they are “functional” or “parameter” images that display a different type of information than standard CT images: Normal CT images basically show only morphological properties of tissues by displaying their x-ray attenuation relative to that of water as CT-values in HU-units.

Standard contrast-enhanced CT extends this limitation either to make a compartment visible that normally has low contrast (e. g. vascular structures in CTA) or to qualitatively display major perfusion differences of tissues (e. g. tumors or multiphase liver studies).

Perfusion CT tries to utilize all the information hidden in the temporal changes of contrast enhancement by fitting a mathematical model to the local time attenuation curves. For each voxel this process yields a variety of numbers which describe different aspects of tissue perfusion. As the human eye is so much faster and better suited to interpret images than large amounts of numbers it makes sense to display these quantities in the form of images.

3. What do pixel values mean in the Perfusion CT images?

It is very important to realize that pixel values now have a different meaning, which depends on the type of image currently displayed. So if you point the cursor into a parameter image bear in mind that you do not read a CT-value but a functional unit. A time-to-peak image, for example, displays numbers proportional to the time until the bolus peak is reached; so higher numbers mean later bolus arrival.

A CBF image, on the other hand, displays numbers proportional to blood flow; so smaller numbers indicate lower flow.

4. Filming color images

If a color hardcopy device is connected to the system, color images can be printed via the filming task card. It is recommended to send the color images from the Viewing task card after having saved them on the Perfusion task card.

5. How to fine-tune the color mapping?

– For “flow images” (CBF and CBV) – the color palette for the flow image is designed such, that after optimal adjustment with the arrow buttons the following approximate correspondence will result for a normal brain:

red _ vessels

green/yellow _ gray matter

blue _ white matter

black _ no calculation (CSF space)

After adjustment (use non-ischemic hemisphere as guideline) ischemic areas will therefore be displayed either in violet (very low flow) or as a mismatch with the nonischemic side (gray matter is blue instead of green).

– For “Time images” (Time to Start and Time to Peak) – the color palette for the time images maps increasing time values on a spectral scale:

Violet _ blue _ green _ yellow _ red

Display should be adjusted with the arrow buttons such that the areas with latest arrival times are just slightly red. As with the flow image black means no calculation (CSF space, or areas with extremely low flow _ no time assessment possible).

Dynamic Scanning

These are protocols templates for the analysis of contrast enhancement dynamics in the body. Scan parameter details such as mAs, slice width, increment etc. depend on the organ to be studied.

These may be used with the Dynamic Evaluation function for the descriptive analysis of contrast enhancement of tissues.

Scan Protocols

There are two scan protocols available:

BodyDynCT, a Serio Mode with a 1.5 mm slice collimation and 2 times a 12 mm slice width.

BodyDynSingle, a Serio Mode with a 5 mm slice collimation and one 10 mm slice width.

	BodyDynCT
<i>kV</i>	120
<i>Effective mAs</i>	100
<i>Slice collimation</i>	1.5 mm
<i>Slice width</i>	12.0 mm
<i>Feed/Scan</i>	0 mm
<i>Rotation time</i>	0.5 sec.
<i>Cycle time</i>	5.0 sec.
<i>Kernel</i>	B30f

	BodyDynSingle
<i>kV</i>	120
<i>Effective mAs</i>	100
<i>Slice collimation</i>	5.0 mm
<i>Slice width</i>	10.0 mm
<i>Feed/Scan</i>	0 mm
<i>Rotation time</i>	0.5 sec.
<i>Cycle time</i>	5.0 sec.
<i>Kernel</i>	B30f

Interventional CT

To facilitate CT interventional procedures, we created dedicated Sequence Modes for one single scan; i. e. in this Software Version the soft key – “Biopsy” is dimmed.

- Biopsy
This is the multislice biopsy mode. E. g. 4 slices, 4.5 mm each, will be reconstructed and displayed for each scan.
- BiopsyCombine
This is the biopsy mode with 1 combined slice.

To perform another single scan you can “repeat” the Biopsy/BiopsyCombine protocol.

The Basics

Any of these protocols can be appended to a spiral protocol for CT interventional procedures, such as biopsy, abscess drainage, pain therapy, minimum invasive operations, joint studies, and arthrograms.

To perform another single scan, just click the chronicle with the right mouse button for “repeat”.

You can “Append” any routine protocol after the interventional procedure for a final check and documentation, e. g. a short range of spiral scanning for the biopsy region.

The table height can be adjusted to minimum 255 mm.

How to do it

Biopsy

Indications: This is the multislice biopsy mode. Four slices, 4.5 mm each, will be reconstructed and displayed for each scan. It can be appended to any other scan protocol, e. g. ThoraxRoutine for biopsy procedures in the thorax. Change the mAs setting accordingly before you load the mode.

	Biopsy
<i>kV</i>	120
<i>Effective mAs</i>	120
<i>Slice collimation</i>	1.5 mm
<i>Slice width</i>	4.5 mm
<i>Feed/Scan</i>	0 mm
<i>Rotation time</i>	0.5 sec.
<i>Kernel</i>	B30f

Application procedures:

1. Perform a spiral scan first to define a target slice.
2. Click "Same TP" under Table position in the routine card, and move the table.
3. Turn on the light marker to localize the Entry point, and then start the patient preparation.
4. Select "Biopsy" mode under Special protocols, and then click "Append".
5. Click "Load" and then "Cancel move". Press the "Start" button and 4 images will be displayed.
6. Press "Repeat" and "Start" again, you'll get another 4 images with the same slice position.

Interventional CT

BiopsyCombine

Indications: This is the biopsy mode with one combined slices. It can be appended to any other scan protocol, e. g. ThoraxRoutine for biopsy procedures in the thorax.

Change the mAs setting accordingly before you load the mode.

	BiopsyCombine
<i>kV</i>	<i>120</i>
<i>Effective mAs</i>	<i>120</i>
<i>Slice collimation</i>	<i>5.0 mm</i>
<i>Slice width</i>	<i>10 mm</i>
<i>Feed/Scan</i>	<i>0 mm</i>
<i>Rotation time</i>	<i>0.5 sec.</i>
<i>Kernel</i>	<i>B30f</i>

Application procedures:

1. Perform a spiral scan first to define a target slice.
2. Click "Same TP" under Table position in the routine card, and move the table.
3. Turn on the light marker to localize the Entry point, and then start the patient preparation.
4. Select "BiopsyCombine" mode under Special protocols, and then click "Append".
5. Click "Load" and then "Cancel move". Press the "Start" button and one image will be displayed.
6. Press "Repeat" and "Start" again, you'll get another image with the same slice position.

Additional Important Information

- In the BiopsyCombine mode, the slice position, table position, table begin and table end are all the same.
- In the Biopsy mode, the slice position, table position, table begin and table end are different.

a) The SP (slice position) in each image means the center of the image (Fig. 1).

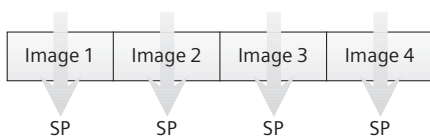


Fig. 1

b) The "Table position" means the central position of the 4 (or 2) images and will also be the position of the positioning light marker (Fig. 2).

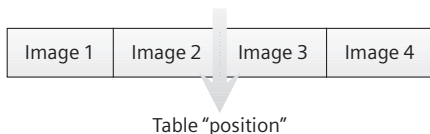


Fig. 2

c) The table "Begin" means the center of the first image, and the table "End" means the center of the last image (Fig. 3).



Fig. 3

Trauma

In any trauma situation, time means life and the quality of life for the survivor. In order to facilitate the examinations, two protocols are provided:

- Trauma
This is a one-range mode for fast screening
- PolyTrauma
This is a combined mode for the examination of multiple ranges, e. g. Head, Neck, Thorax, Abdomen and Pelvis

The Basics

- Check that the emergency drug trolley is well-stocked and that all accessories such as in-room oxygen supply, respirator and resuscitation equipment that may be required during the examination are in working order.
- Prepare the CT room before admitting the patient, e. g., load IV contrast into the injector.
- Know, observe and practice the standard hospital operating policy for handling a patient in distress e. g. Code Blue for cardiac and respiratory arrest.
- Any possible injuries to the spinal column should be determined before beginning the examination and taken into account when shifting and positioning the patient.
- Ensure that all vital lines e. g., IV tubing and oxygen tubing are not trapped under the patient or between the table and the cradle. Make allowance for the length of tubing required for the topogram scan range.
- Never leave patients unattended at any time during the procedure.
- Observe the vital signs e. g. ECG, respiration, etc. at all times during the procedure.
- Finish the examination in the shortest possible time.

How to do it

Trauma

Scan Protocol:

	Trauma
<i>kV</i>	120
<i>Effective mAs</i>	140
<i>Slice collimation</i>	1.5 mm
<i>Slice width</i>	7.0 mm
<i>Feed/Rotation</i>	30.0 mm
<i>Rotation time</i>	0.5 sec.
<i>Kernel</i>	B30f
<i>Increment</i>	7.0 mm
<i>Image order</i>	ca-cr
<i>CTDI_w</i>	9.8 mGy
<i>Effective dose</i>	Male: 7.2 mSv Female: 8.9 mSv

You can adjust the mAs setting according to the region to be examined.

Trauma

PolyTrauma

Scan Protocol:

PolyTrauma	HeadFastSpi	NeckFastspi
<i>kV</i>	120	120
<i>Effective mAs</i>	260	150
<i>Slice collimation</i>	1.5 mm	1.5 mm
<i>Slice width</i>	6.0 mm	5.0 mm
<i>Feed/Rotation</i>	15.8 mm	24.0 mm
<i>Rotation time</i>	0.75 sec.	0.5 sec.
<i>Kernel</i>	H30s	B30f
<i>Increment</i>	6.0 mm	5.0 mm
<i>Image order</i>	ca-cr	cr-ca
<i>CTDI_w</i>	60.3 mGy	10.5 mGy
<i>Effective dose</i>	Male: 2.0 mSv Female: 2.1 mSv	Male: 1.5 mSv Female: 1.6 mSv

PolyTrauma	ThoraxFast	AbdPelRoutine
<i>kV</i>	120	120
<i>Effective mAs</i>	110	140
<i>Slice collimation</i>	1.5 mm	1.5 mm
<i>Slice width</i>	7.0 mm	7.0 mm
<i>Feed/Rotation</i>	24.0 mm	24.0 mm
<i>Rotation time</i>	0.5 sec.	0.5 sec.
<i>Kernel</i>	B40f	B30f
<i>Increment</i>	7.0 mm	7.0 mm
<i>Image order</i>	cr-ca	cr-ca
<i>CTDI_w</i>	7.7 mGy	9.8 mGy
<i>Effective dose</i>	Male: 2.6 mSv Female: 3.4 mSv	Male: 5.9 mSv Female: 8.5 mSv

In different polytrauma cases, you could either combine different protocols, or delete any of the chronicles from the predefined protocol if they are not needed.

Additional Important Information

- For long range scanning, please pay attention to the mark of scannable range on the table mattress while positioning the patient.
- In some cases, it might be advisable to position the patient as Feet first so that there will be more space for the intensive care equipment around.
- The Trauma protocol is predefined with a Topo length of 1024 mm, the Poly Trauma protocol with a Topo length of 1536 mm.

Note: You should press the “Hold Measurement” button whenever the range shown on the real time growing topogram is long enough, in order to avoid unnecessary radiation.

WholeBodyAngio

This scan protocol can be used for a whole Body Angio.
A range of 100 cm can be covered in 21.4 s.

	WholeBodyAngio 2nd reconstr.	
<i>kV</i>	120	
<i>Effective mAs</i>	130	
<i>Slice collimation</i>	1.5 mm	
<i>Slice width</i>	6.0 mm	2.0 mm
<i>Feed/Rotation</i>	24.0 mm	
<i>Rotation time</i>	0.5 sec.	
<i>Kernel</i>	B30f	B20f
<i>Increment</i>	6.0 mm	1.5 mm
<i>Image order</i>	cr-ca	

The reconstruction can be loaded in the 3D Card, MPR. Select the Range function and a predefined range, linked to the series, will pop up.

Please notice, if you are not satisfied with the Range preset adapt the parameters to your needs and link them to the series.

MPRthick: WholeBodyAngio	coronal
<i>Image thickness</i>	3
<i>Distance between images</i>	3
<i>Number of images</i>	60



LungCARE

A dedicated low dose Spiral mode for the *syngo* LungCARE evaluation.

Indications:

Lung studies with low dose setting, e. g. early visualization of pulmonary nodules.

A typical thorax study in a range of 30 cm will be covered in 8.9 s.

	LungCARE
<i>kV</i>	120
<i>Effective mAs</i>	20
<i>Slice collimation</i>	0.75 mm
<i>Slice width</i>	1.0 mm
<i>Feed/Rotation</i>	18.0 mm
<i>Rotation time</i>	0.5 sec.
<i>Kernel</i>	B50f
<i>Increment</i>	0.5 mm
<i>Image order</i>	cr-ca
<i>CTDI_w</i>	1.6 mGy
<i>Effective dose</i>	Male: 0.6 mSv Female: 0.8 mSv

We recommend using a tube voltage of at least 120 kV.

For further information on the *syngo* LungCARE Application, please refer to the Application Guide "Clinical Options".

CT Colonography

For Colonography studies.

A typically range of 40 cm can be covered in 13.9 s.

	CT Colonography 2 nd reconstr.	
<i>kV</i>	120	
<i>Effective mAs</i>	100	
<i>Slice collimation</i>	0.75 mm	
<i>Slice width</i>	5.0 mm	1.0 mm
<i>Feed/Rotation</i>	15.0 mm	
<i>Rotation time</i>	0.5 sec.	
<i>Kernel</i>	B30f	B30f
<i>Increment</i>	5.0 mm	0.7 mm
<i>Image order</i>	cr-ca	
<i>CTDI_w</i>	7.8 mGy	
<i>Effective dose</i>	Male: 4.5 mSv	Female: 6.9 mSv

CT Colonography

We recommend using a tube voltage of at least 120 kV.

A comprehensive study consists of four sections: Preparation, examination in supine & prone positioning and post processing.

- Patient preparation

In the case of CT Colonography, adequate preparation in bowel cleaning must be done prior to the CT examination.

Important for good results in a CT Colonography examination is the optimal preparation of the patient.

The patient has to start with a diet and bowel cleansing two days prior to the examination like for a conventional Colonoscopy.

- Patient examination

The bowels can be delineated with air. Or, if desired, with carbon dioxide, water or iodine/barium suspension.

Have patient inflate colon with air to maximum tolerance.

To decrease colon spasm, e. g. Buscopan™ or Glucagon™ can be given IV.

Usually a prone and supine examination are done to differentiate between polyps and fecal matter within the colon.

- Post processing

For further information on the *syngo* Fly Through Application, please refer to the Application Guide "Clinical Options".

Osteo CT

Example for one patient with three Osteo tomograms:

PATIENT; John Smith; 007; 64; Male

IMAGE; L2; 234; 2; 27-JAN-1998; 11:12:17; 61.7; 48.9; 55.3; 20.8; 20.1; 21.5; 205.8; 192.0; 198.7; 50.6; 47.5; 49.5

IMAGE; L3; 236; 3; 27-JAN-1998; 11:12:18; 60.4; 54.5; 49.3; 22.3; 21.1; 21.8; 210.5; 191.9; 180.7; 50.4; 47.5; 52.3

IMAGE; L4; 238; 4; 27-JAN-1998; 11:12:18; 59.3; 43.1; 55.0; 20.6; 29.0; 23.3; 201.8; 178.1; 192.3; 43.6; 45.9; 44.2

REFDATA; 64; Male; 20; -4.35; -3.12; 75.4; 125.3; 26.5

Data Structure of the result file:

PATIENT; <Patient name>; <Patient ID>;

<Age of patient>; <Sex of patient>

IMAGE; <Vertebra name>; <Image number>;

<Scan number>; <Scan date>; <Scan time>; <TML>;

<TMR>; <TMT>; <TSL>; <TSR>; <TST>; <CML>; <CMR>;

<CMT>; <CSL>; <CSR>; <CST>

REFDATA; <Age of patient>; <Sex of patient>;

<Age of young normal>; <T-Score>; <Z-Score>;

<BMD reference data, age matched>;

<BMD reference data, young control>;

<Standard deviation reference data>

Abbreviations:

TML Trabecular Mean Left

TMR Trabecular Mean Right

TMT Trabecular Mean Total

TSL Trabecular Standard Deviation Left

TSR Trabecular Standard Deviation Right

TST Trabecular Standard Deviation Total

CML Cortical Mean Left

CMR Cortical Mean Right

CMT Cortical Mean Total

CSL Cortical Standard Deviation Left

CSR Cortical Standard Deviation Right

CST Cortical Standard Deviation Total

Pulmo CT

Example of result file:

START; 20-FEB-1998 12:01:17
PATIENT; John Smith; 007; 64; Male
IMAGE; 234; 21; 27-JAN-1998 11:12:17;-200;1
RESULTS; LEFT; 234; -1024; 3071; -905; 43.4; 22.5;
112; 34.5; 0.1
RESULTS; RIGHT; 234; -1024; 3071; -899; 33.4; 19.5;
85; 30.1; 0.1
RESULTS; TOTAL; 234; -1024; 3071; -903; 38.1; 21.0;
93; 64.6; 0.1
SUBRANGE; LEFT; 234; 1; -1000; -400; 200; 75.0;
15.9; 3.3
SUBRANGE; RIGHT; 234; 1; -1000; -400; 200; 80.9;
15.1; 2.2
SUBRANGE; TOTAL; 234; 1; -1000; -400; 200; 78.0;
15.5; 2.8
SUBRANGE; LEFT; 234; 2; -1024; 1000; 0; 100.0
SUBRANGE; RIGHT; 234; 2; -1024; 1000; 0; 100.0
SUBRANGE; TOTAL; 234; 2; -1024; 1000; 0; 100.0
PERCENTILE; LEFT; 234; 1; 0; 100; 25; -1012; -954;
-953; -885; -884; -800; -799; -112
PERCENTILE; RIGHT; 234; 1; 0; 100; 25; -1023; -934;
-933; -888; -887; -785; -784; -211
PERCENTILE; TOTAL; 234; 1; 0; 100; 25; -1023; -944;
-943; -886; -885; -793; -793; -112
.....

Appendix

Data structure of the result file:

START; <Date and Time of the evaluation start>

PATIENT; <Patient name>; <Patient ID>;

<Age of patient>;

<Sex of patient>

IMAGE; <Image number>; <Scan number>;

<Scan date and time>; <Threshold Contour>;

<Number of Shrinkings>

RESULTS; <LEFT/RIGHT/TOTAL>; <Image number>;

<Lower eval. limit>; <Upper eval. limit>; <Mean>;

<Standard Deviation>; <Area>; <FWHM>;

<Accumulated Volume>; <Accumulated Height>

SUBRANGE; <LEFT/RIGHT/TOTAL>; <Image number>;

<Subrange Number>; <Lower Limit>; <Upper Limit>;

<Increment>; <Percent Area first subrange>;;

<Percent Area last subrange>

PERCENTILE; <LEFT/RIGHT/TOTAL>;

<Image number>; <Percentile range number>;

<Lower Limit>; <Upper Limit>; <Increment>;

<Lower HU value first percentile>;

<Upper HU value first percentile>;;

<Lower HU value last percentile>;

<Upper HU value last percentile>

AUTOSEGMENT; <LEFT/RIGH >;

<Image number>; <Segmentation number>;

<W=Whole/C=Central/P=Peripheral>;

<A=Area/H=Heights>; <Number of segments>;

<Distance>; <ROI width>;

<AP gradient : 0=no / 1=yes>;

<Mean value first segment>;;

<Mean value last segment>;

<Standard deviation first segment>;;

<Standard deviation last segment>;

<Area first segment>;; <Area last segment>;

<AP-Gradient>

Appendix

MANSEGMENT; <LEFT/RIGHT>;
<Image number>; <Segmentation number, always 1>;
<Number of segments>;
<Mean value first segment>;;
<Mean value last segment>;
<Standard deviation first segment>;;
<Standard deviation last segment>;
<Area first segment>;; <Area last segment>
TOTALRESULTS; <LEFT/RIGHT/TOTAL>;
<Upper eval. limit>; <Lower eval. limit>; <Mean>;
<Standard Deviation>; <Area>; <FWHM>;
<Accumulated Volume>; <Accumulated Height>
TOTALSUBRANGE; <PATIENT/REFERENCE/RATIO>;
<Subrange Number>; <Lower Limit>; <Upper Limit>;
<Increment>;
<Percent Area first subrange (or Ratio for RATIO)>;;
<Percent Area last subrange (or Ratio for RATIO)>
TOTALPERCENTILE;
<PATIENT/REFERENCE/DIFFERENCE>;
<Percentile range number>;
<Lower Limit>; <Upper Limit>; <Increment>;
<Lower HU value first percentile
(or difference for DIFFERENCE)>;
<Upper HU value first percentile
(or difference for DIFFERENCE)>;;
<Lower HU value last percentile
(or difference for DIFFERENCE)>;
<Upper HU value last percentile
(or difference for DIFFERENCE)>
REFDATA; <Age of patient>; <Sex of patient>;
<Age of young normal>; <T-Score>;
<Z-Score>; <Reference data, age matched>;
<Reference data, young control>;
<Standard deviation reference data>
END; <Date and Time of the evaluation end>

Siemens reserves the right to modify the design and specifications contained herein without prior notice. Please contact your local Siemens Sales Representative for the most current information.

Note:

Original images always lose a certain amount of detail when reproduced.

Siemens AG
Medical Solutions
Computed Tomography
Siemensstrasse 1
D-91301 Forchheim
Germany
www.SiemensMedical.com

Siemens **Medical**
Solutions that help

Order No.
A91100-M2100-A727-1-7600
Printed in Germany
CC 63727 BA 06025.