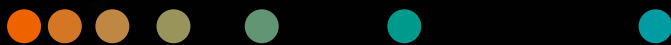


syngo.via

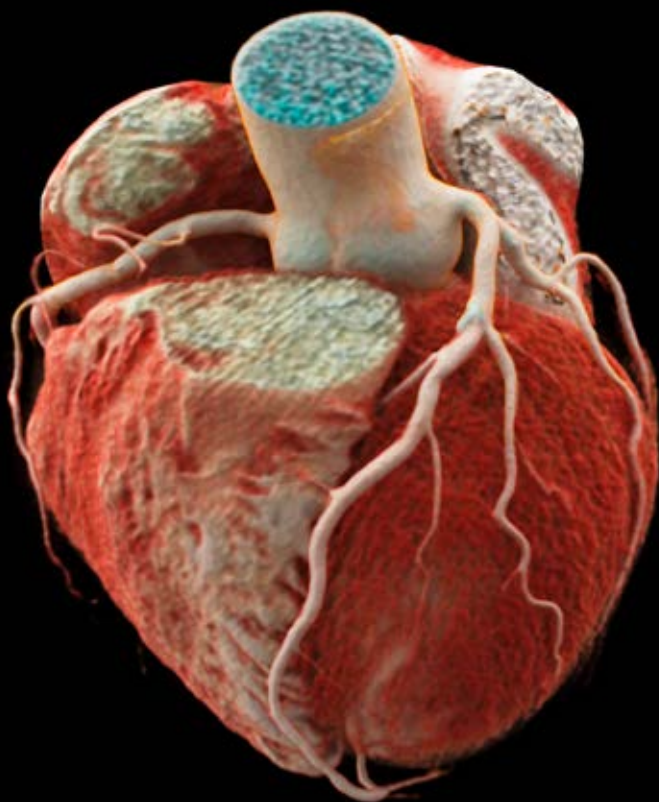
Powerful reading. Actionable results.

What's new with syngo.via VB40

siemens-healthineers.com/syngo.via



Courtesy of University Hospital of Erlangen,
Erlangen, Germany



Contents

Powerful reading	6
Actionable results	7
One centralized workflow	8
syngo.via OpenApps	10

A vast treasure of data from various modalities

Waiting to be turned into better diagnoses

Radiologists face growing clinical demands. While the radiology workforce generally remains stable, there is a significant increase in data from various modalities and cases. As a consequence, radiologists work under more time pressure.

Unfortunately, routine tasks in reading software often take up a lot of time – with manual workflow steps, complex navigation, and inconsistent user experience. As an intelligent, integrated imaging software, *syngo.via* helps you to address and overcome these issues.

Imaging workload is continuously growing



Imaging workload **doubled every year** in the past five years¹

More and more data needs to be turned into insights



Volume of **medical data expected to grow 50x p.a.** until 2020²

Let's advance the digitalization of healthcare with *syngo.via*

Be fast and accurate with powerful tools and actionable results that are accessible for better care

With the latest release of *syngo.via*, we focus on streamlining the processes around reading and reporting. *syngo.via* unifies and centralizes intelligent tools in a powerful diagnostic workflow to make your routine tasks more convenient and efficient. At the same time, *syngo.via* optimizes report creation by integrating established solution with real-time findings transfer. It delivers actionable image-based results that are consolidated in one high-quality report.

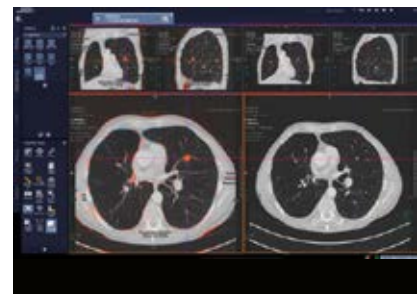
¹ "Clinical Radiology workforce consensus 2017 report", Royal College of Radiology, 2018

² "Taking the Pulse of Health Care Transformation", Harvard Business Review Analytic Services Pulse Plus Survey, October 2017

syngo.via

Powerful reading

With the latest release of *syngo.via*, routine reading becomes more efficient and convenient. Powerful tools in our workflow help you simplify your diagnostic process – both for advanced visualization and routine reading. *syngo.via* seamlessly integrates advanced tools and algorithms. As a result, it offers a centralized, intelligent, and customizable control center with everything in one place. Reduce complexity, increase productivity – and let *syngo.via* help you advance digitalization in healthcare.



Interactive Spectral Imaging

- Use the most common Dual Energy application classes (Monoenergetic Plus, Mixed, virtual unenhanced (VNC), Iodine Map) directly within *syngo.via* MM Reading by the click of one button.
- Interactive Spectral Imaging makes Dual Energy as easy as windowing so you can use additional spectral information at a glance.

MRI Generic Tools

- MM Reading supports basic MRI image reading including MRI general & composing tools to simplify routine reading.
- MR Calculation Tools: Subtraction, Addition, Multiplication, Division, Arithmetic Mean and ADC & B-value calculation.
- Motion Correction, Image Filter and MR Composer.

CT Lung Change Visualization

- Lung Change visualization for CT provides a color-coded overlay to quickly review and assess changes in density across different time points.
- For automated and faster reading it automatically registers different time points.

syngo.via

Actionable results

syngo.via also streamlines your reporting. By collaborating with market leaders in reporting and EHR, Siemens Healthineers aims to offers guideline support for a variety of clinical use cases. Automatic, real-time findings integration and intelligent support assist you in generating structured and consistent reports. syngo.via provides you with actionable image based results to navigate care delivery.

Schematic overview of data exchange between reading, reporting and EHR. Create actionable results that transform care delivery with syngo.via

Workflow integration, from finding to actionable results.

Results are readily available in the patient care process directly in the EHR. That is done by structuring the results in a machine readable format– without extra efforts for the radiologist.

Radiology becomes a navigator for clinical care, turning imaging data into results that improve medical decision making and, finally, patient outcomes.

1



2

Radiology report

Findings

Lung **Abnormal**

Impression

Subsolid lung nodule 11mm,

Clinical guidance

Follow-up CT scan in 3–6 months

3



New reporting guidelines enhance documentation and communication of results:

- Lung-RADS
 - TNM Classification and Staging
 - CAD-RADS
 - LI-RADS
-

One centralized workflow

We have integrated dedicated tools that are relevant for CT, MRI and MI but also multimodality reading. All of them simplify routine reading by providing a comprehensive post-processing solution in one workflow.

Multimodality routine reading

General Radiology



- Cinematic VRT
- ALPHA Technology
- Anatomical Registration
- Spine & Rib Labeling
- Rapid Results Technology
- Automatic and interactive contouring tools

Oncology



- Lung CAD
- CT Lung Change
- SUV Display
- Basic Onco Tool

Advanced Tools



- Interactive Spectral Imaging
- MR Generic tools (incl. Calculation, Motion Correction, Image Filter, ADC & b-value calculation, and composing)
- 4D Analysis – Time Curve Tool
- Fusion

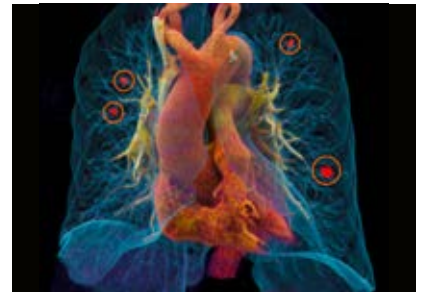
Cardiovascular



- Vessel Extension for CT & MRI
- Heart Isolation & Coronary Tree visualization

Artificial intelligence leveraging healthcare powered by *syngo.via*

There are many new challenges to solve with an increased amount of available data and an increased number of examinations. *syngo.via* helps you to address and overcome these issues. Siemens Healthineers has served as a pioneer in AI development for more than 20 years and can offer a broad AI-driven portfolio across multiple modalities for routine reading.



Anatomical Intelligence: ALPHA

- ALPHA technology automatically detects anatomical landmarks and structures in medical images
- Automatic spine/rib labeling
- Anatomical range pre-sets: ranges and projections are automatically initialized with respect to the underlying anatomy (parallel, curved or radial)
- Anatomical registration: multiple timepoint registration based on anatomical landmarks

Anatomy Visualizer

- Includes extended automatic and semi-automatic segmentation tools for Lung, Heart, and Aorta

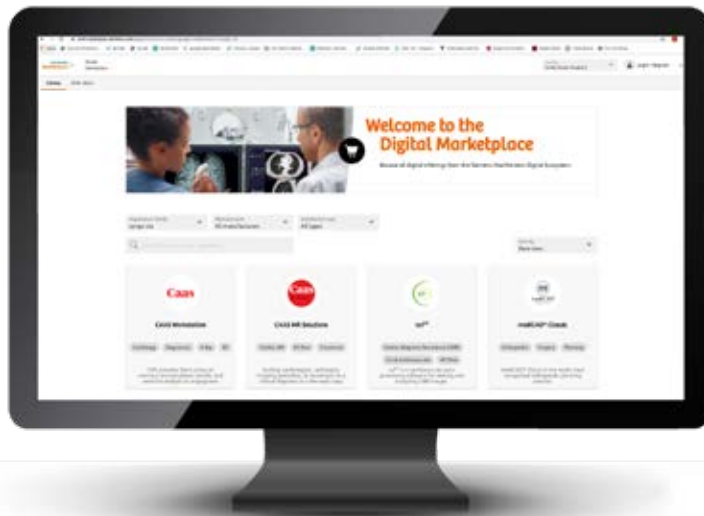
syngo.CT Lung CAD

- Computer-aided detection of solid pulmonary nodules
 - Assistance during review of CT examinations of the chest
 - Alerts radiologists to ROI that may have been initially overlooked

syngo.via OpenApps

Your gateway to innovation

Do you want to boost your clinical capabilities? *syngo.via* OpenApps provides you direct and open access to a world of innovation. Get access and run an ever-growing variety of clinical applications from Siemens Healthineers and our partners – directly on your *syngo.via*.



Smart and growing portfolio

- Increase clinical capabilities with apps from Siemens Healthineers and its partners
- Benefit from an evolving app portfolio with no additional infrastructure investment or maintenance
- Flexibly subscribe to applications with no additional service charges



Fast access to innovation

- Browse the Siemens Healthineers Digital Marketplace and instantly test any application
- One-click installation on a central server – and apps are ready to use for all clients
- Security scanned by Siemens Healthineers



Seamless user experience

- Experience any of the available applications as part of your *syngo.via* and make your workflow more efficient
- Seamless integration of apps in your existing IT environment
- Efficient service management with single point of contact connecting to application experts

**Applications from the following partners are available for download on the Digital Marketplace.
Stay tuned for many more to come!**



cvi42

Best-in-class cardiovascular post-processing software for the analysis of MRI and CT images, providing rapid analysis with unparalleled accuracy.



mediCAD Classic

mediCAD Classic is a global orthopaedic planning solution that helps to ensure a high level of planning and operational quality that provides information to determine, display, calculate and document the most effective alternatives before surgery.



4D MR Flow, CT Structural Heart

Cardiac MRI (CAAS MR Solutions), Structural Heart MSCT planning (3mensio), Software for PCI analysis (CAAS Workstation, IntraVascular).



Mimics inPrint

With Mimics inPrint, users can setup an efficient in-house anatomical modeling and 3D printing activity to advance your clinical practice.



SyMRI

SyMRI delivers multiple adjustable contrast images and quantitative data for objective decision support from a single 5 minute scan.



Cercare Medica

Perfusion Analysis and Decision Support Cercare Medical Neurosuite provides perfusion maps of unparalleled precision together with AI-driven modules for stroke assessment and progression analysis.

Siemens Healthineers is neither the provider nor reseller nor legal manufacturer of any partner-applications mentioned here. Any claims made for this product are under the sole responsibility of the legal manufacturer. Additionally, the partner applications may not be commercially available in all countries. Please contact the legal manufacturer for more information.

syngo.via can be used as a stand-alone device or together with a variety of *syngo.via*-based software options, which are medical devices in their own right.

syngo.via and *syngo.via* OpenApps are not yet commercially available in all countries. Due to regulatory reasons, its future availability cannot be guaranteed.

Please contact your local Siemens Healthineers organization for further information.

Siemens Healthineers Headquarters

Siemens Healthcare GmbH
Henkestr. 127
91052 Erlangen, Germany
Phone: +49 9131 84-0
siemens-healthineers.com