

# ADVIA Centaur C-Peptide Assay Specifications



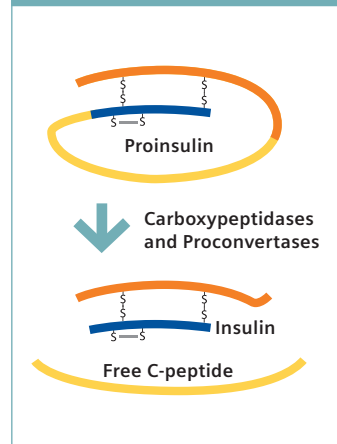
## ADVIA Centaur — Maximizing Satisfaction

- Optimal productivity up to 240 tests per hour
- Comprehensive disease state menu includes Anemia, Cardiovascular, Diabetes, Fertility, Infectious Disease, Metabolic, Oncology, TDMs, and Thyroid

For in vitro diagnostic use in the quantitative determination of C-Peptide in serum or urine using the ADVIA Centaur® CP and XP systems. This assay can be used to aid in the diagnosis and treatment of patients with abnormal insulin secretion, including diabetes mellitus.

The ADVIA Centaur C-Peptide assay is a two-site sandwich immunoassay using direct chemiluminescent technology, which uses constant amounts of two antibodies. The first antibody, in the Lite Reagent, is a monoclonal mouse Anti-C-Peptide antibody labeled with acridinium ester. The second antibody, in the Solid Phase, is a monoclonal mouse Anti-C-Peptide antibody, which is covalently coupled to paramagnetic particles.

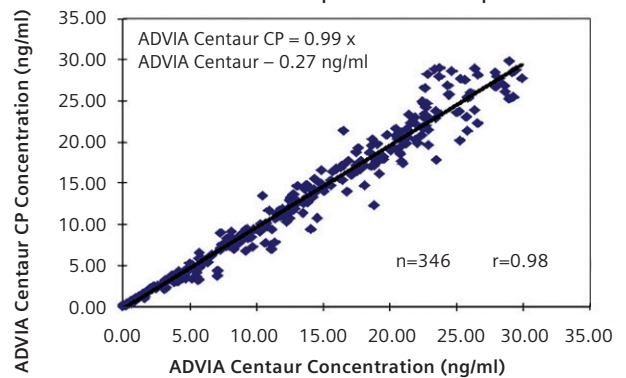
## Proinsulin is the precursor of Insulin and C-Peptide



## Excellent Agreement Across Systems

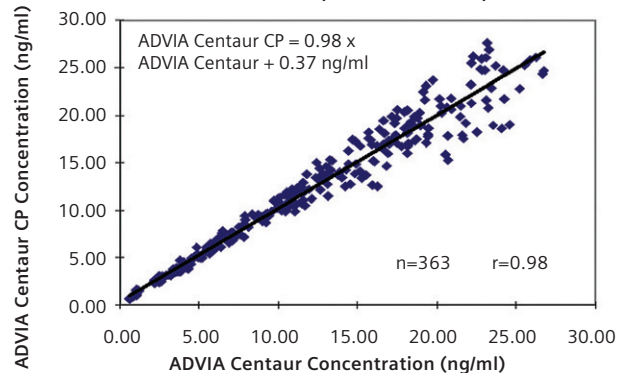
### Serum

#### ADVIA Centaur CP C-Peptide 2-Point Comparison



### Urine

#### ADVIA Centaur CP C-Peptide 2-Point Comparison



ADVIA Centaur—Maximizing Satisfaction

Answers for life.

SIEMENS

# ADVIA Centaur C-Peptide Assay Specifications

## C-Peptide Performance Summary

Product Name	Sample Type	Sample Volume	Assay Range	Analytical Sensitivity	Calibration Interval	Onboard Stability	Time to First Result
ADVIA Centaur XP	Serum	50µL	0.05–30 ng/mL	0.05 ng/mL	14 days	28 days	18 minutes
	Urine	50µL (diluted 1:10)	0.50–300 ng/mL				
ADVIA Centaur CP	Serum	50µL	0.05–30 ng/mL	0.05 ng/mL	42 days	42 days	15 minutes
	Urine	50µL (diluted 1:10)	0.50–300 ng/mL				

## Ordering Information

Catalog No.	Description	Contents
03649928	1 ReadyPack® primary reagent pack containing ADVIA Centaur CpS Lite Reagent and Solid Phase ADVIA Centaur and ADVIA Centaur CP CpS Master Curve card	100 Tests
03276056	CpS Calibrator	2 vials of low calibrator 2 vials of high calibrator
05440554	ADVIA Centaur Multi-Diluent 10	2 ReadyPack ancillary reagent packs containing 5 mL/pack
04302166	Multi-Diluent 10	10 mL/vial
07642456	Ligand Plus 1,2,3 quality control material	5 x 5 mL
07377973	Ligand Plus 1,2,3 barcode labels	60/level
129023	CpS Master Curve Material	10 x 1 mL

ADVIA Centaur, ReadyPack and all associated marks are trademarks of Siemens Healthcare Diagnostics Inc. All other trademarks and brands are the property of their respective owners. Product availability may vary from country to country and is subject to varying regulatory requirements. Please contact your local representative for availability.

### Siemens Global Headquarters

Siemens AG  
Wittelsbacherplatz 2  
80333 Muenchen  
Germany

### Global Siemens Healthcare Headquarters

Siemens AG  
Healthcare Sector  
Henkestrasse 127  
91052 Erlangen, Germany  
Telephone: +49 9131 84 - 0  
[www.siemens.com/healthcare](http://www.siemens.com/healthcare)

### Global Division

Siemens Healthcare Diagnostics Inc.  
1717 Deerfield Road  
Deerfield, IL 60015-0778  
USA  
[www.siemens.com/diagnostics](http://www.siemens.com/diagnostics)

[www.siemens.com/diagnostics](http://www.siemens.com/diagnostics)